



**Wellington High School**  
**Te Kura Tuarua o Taraika ki Pukeahu**

**Senior Course Choices**  
**Years 11, 12, 13**  
**2024**



# CONTENTS

<b>Introduction</b>	Staff and timelines	5
	Your study pathway	6
	Year 11 advice	7
	Year 12 and 13 advice	8
	NCEA Qualifications	9
	Study beyond WHS	10
	Courses overview	11-12
<b>Cross curricular courses</b>		13
<b>Multi-level courses</b>		13
<b>New courses for 2024</b>		13
<b>The Arts</b>		14
ART, PAINTING, PHOTOGRAPHY, DRAMA, DESIGN & MUSIC		
<b>English</b>		19
ENGLISH		
<b>Health and Physical Education</b>		24
OUTDOOR EDUCATION, SPORTS SCIENCE, HEALTH, PHYSICAL EDUCATION		
<b>Languages</b>		28
CHINESE, JAPANESE, TE REO MĀORI, ENGLISH LANGUAGE, SPANISH		
<b>Learning Services</b>		34
STUDY SUPPORT		
<b>Mathematics</b>		35
ALGEBRA, STATISTICS, CALCULUS, FINANCE & NUMERACY		
<b>Science</b>		38
SCIENCE, BIOLOGY, CHEMISTRY, PHYSICS, EARTH & SPACE SCIENCE, HORTICULTURE		
<b>Social Sciences</b>		43
HISTORY, GEOGRAPHY, MEDIA, CLASSICS, SOCIOLOGY, PSYCHOLOGY		
<b>Technology</b>		51

---

DIGITAL TECHNOLOGY, DESIGN &  
VISUAL TECHNOLOGY,  
ELECTRONICS, ENGINEERING,  
FOOD & FASHION

---

**Trades & Careers**

60

PATHWAYS, GATEWAY, STAR &  
TRADES ACADEMIES

---

**Other Opportunities for Study**

62

NetNZ, Te Aho o Te Kura  
Pounamu  
Beyond Wellington High

---

**Need some help  
selecting your  
course?**

**Talk to your rōpū  
teacher, Dean,  
subject teacher, Head  
of Faculty, and your  
whānau.**

**Speak to our Careers  
team, Chuni Bhikha  
and Bec McKenzie.**



**Need Careers  
advice? Go to  
[Careers.govt](https://careers.govt.nz) and  
use their useful  
tools, such as  
CareerQuest and  
Career Checker.**

# Staff and timelines

Here are the contact details for staff you may like to talk to about your course choices for 2024.

## Senior Deans 2024

Year 11	Hannah Paton-Smith & Michael Allsopp	<a href="mailto:year11deans-2024@whs.school.nz">year11deans-2024@whs.school.nz</a>
Year 12	Jackson Martin & Natalie Randall	<a href="mailto:year12deans-2024@whs.school.nz">year12deans-2024@whs.school.nz</a>
Year 13	Edward Meredith & Jo Hawes	<a href="mailto:year13deans-2024@whs.school.nz">year13deans-2024@whs.school.nz</a>

## Careers and Pathway staff

Head of Careers	Chuni Bhikha	<a href="mailto:bac@whs.school.nz">bac@whs.school.nz</a>
Careers Advisor	Bec McKenzie	<a href="mailto:mcr@whs.school.nz">mcr@whs.school.nz</a>
STAR / Gateway	Terry Hawkings	<a href="mailto:hst@whs.school.nz">hst@whs.school.nz</a>

## Heads of Faculty

Arts	Rachel Clark	<a href="mailto:ckr@whs.school.nz">ckr@whs.school.nz</a>
English	Caitlin Reilly	<a href="mailto:ryc@whs.school.nz">ryc@whs.school.nz</a>
Health & Physical Education	Natalie Bell (Acting)	<a href="mailto:bln@whs.school.nz">bln@whs.school.nz</a>
Languages	Sharon Henry	<a href="mailto:hys@whs.school.nz">hys@whs.school.nz</a>
Learning Services	Carly Elder	<a href="mailto:erc@whs.school.nz">erc@whs.school.nz</a>
Mathematics	Suzanne Meijer	<a href="mailto:mjs@whs.school.nz">mjs@whs.school.nz</a>
Science	Kimberly Fiszer	<a href="mailto:fsk@whs.school.nz">fsk@whs.school.nz</a>
Social Sciences	Stephen Beckett	<a href="mailto:bts@whs.school.nz">bts@whs.school.nz</a>
Technology	Peter Jessop	<a href="mailto:jpp@whs.school.nz">jpp@whs.school.nz</a>

## Timeline for making your decision

Monday 7 August	Future Focus Evening
Tuesday 16 August	Student Portal goes live for preliminary course decisions
Friday 18 August	Preliminary decisions made for 2024
Thursday 24 August	Learning Conversations
Friday 15 September	Final course decisions made for 2024

# Your study pathway

What level are you heading into? What are your study requirements and what programme will suit you best?

**Start here:**

What year level will you be entering in 2024?		
Year 11	Year 12	Year 13
<p><b>You study SIX courses</b></p> <p>You must study:</p> <ul style="list-style-type: none"> <li>English and / or Te Reo Māori</li> <li>Mathematics or Numeracy</li> <li>Any other four courses</li> </ul>	<p><b>You can choose FIVE or SIX courses</b></p> <p><b>Or</b></p> <p><b>You might choose a Trades pathway plus three courses</b> (See Chuni Bhikha for more information)</p> <p>You can choose Level 2 or a combination (usually Level 1 and 2 courses)</p> <p>You are strongly advised to choose English or Te Reo Māori to earn UE literacy requirements.</p>	<p><b>You can choose FIVE or SIX courses</b></p> <p><b>Or</b></p> <p><b>You might choose a Trades pathway plus three courses</b> (See Chuni Bhikha for more information)</p> <p>You can choose Level 3 courses or a combination of Level 1, 2 or 3.</p> <p>If you plan to head towards a tertiary degree, you will study at Level 3.</p>

## How to make your choices

Choose courses that

- Suit your needs, interests and abilities
- Will allow you to succeed at that level – check the entry requirements
- Will support your future study

If English is your second language, you may wish to choose an English Language course.

## How the course codes work

<ul style="list-style-type: none"> <li>The first digit indicates the year level you are at: <ul style="list-style-type: none"> <li>1 = Year 11; 2 = Year 12; 3 = Year 13</li> </ul> </li> <li>The second digit is the NCEA Level the course is at: <ul style="list-style-type: none"> <li>1 = NCEA Level 1, 2 = NCEA Level 2, and 3 = NCEA Level 3.</li> </ul> </li> <li>The third digit indicates the National Qualifications Framework (NQF) level the course leads to <u>next year</u></li> </ul>	<p><b>Examples:</b></p> <ul style="list-style-type: none"> <li><b>SCI112:</b> Science, Year 11, leading towards NCEA Level 2</li> <li><b>ENG223:</b> English, Year 12, working towards NCEA level qualifications, leading to NCEA Level 3 courses</li> <li><b>APT335:</b> Art Painting, Year 13, working towards NCEA Level 3 qualifications, leading towards university art study.</li> </ul>
--	--

Courses will also show if they offer co-requisite standards for literacy, numeracy, te reo matatini and pāngarau.

**Course donations:** A number of courses available at WHS have donations attached to them. We do our best to ensure that these costs are accurate, but occasionally these may need to be adjusted after publication. These donations enrich student's learning experience and allow us to provide a diverse curriculum. Your financial support of these programmes is greatly appreciated.



# Year 11

In Year 11 from 2024, you will get a taste of national assessment at **Level 1** of the National Qualifications Framework (NQF). The courses in this booklet are designed to provide a broad foundational knowledge and the skills needed to prepare ākonga for specialisation at NCEA levels 2 and 3. You will not have enough credits to gain your NCEA Level 1 qualification in 2024. However, this will be possible in 2025 when you will also be able to gain your level 2 qualification.

## Two pathways to Senior School:

1. You begin to study NCEA Level 1 courses. **Most courses will assess 1 standard.**
2. Some students may be invited to join our Arotahi programme. More information will follow for selected students.

Please note that any credits that learners already have will remain on their record of learning.

## Think about what you might want to choose at Level 2 in Year 12

Most Level 2 courses recommend that you have studied the subject in Year 11. So, look at Level 2 courses you might be considering and check the entry requirements as you plan your programme.

**Use the planning page** to help you plan your programme for next year and to look ahead to the year after that.

A member of staff will discuss your programme with you before it is finalised.

**We will do our best to offer all courses included in this booklet. We may not always be able to give you your first choice if there are staffing or timetable constraints.**



# Year 12 and Year 13

In Year 12 and 13 you choose a programme that prepares you for your future after school.

<b>To gain NCEA Level 2</b> , you must achieve:	<b>To gain NCEA Level 3</b> , you must achieve:
<ul style="list-style-type: none"><li>• <b>60 credits at Level 2 or above</b>, and</li><li>• <b>20 credits co-requisite</b> literacy, numeracy, te reo matatini, pāngarau <b>or</b></li><li>• <b>10 numeracy credits</b></li><li>• <b>10 literacy credits</b></li></ul>	<ul style="list-style-type: none"><li>• <b>60 credits at Level 3 or above</b>, and</li><li>• <b>20 credits co-requisite</b> literacy, numeracy, te reo matatini, pāngarau <b>or</b></li><li>• <b>10 numeracy credits</b></li><li>• <b>10 literacy credits</b></li></ul>

As you choose your programme:

- Note that there is a wide range to choose from at different levels. You can take any course for which you meet the entry recommendations. You may want to pick up new courses to broaden your education.
- Map your pathway through the senior courses, choosing for 2024, thinking about 2025 and 2026.
- University Entrance is more than simply achieving NCEA Level 3. Look at the rules on page 10.

## Entry requirements

Most Level 3 courses have entry recommendations which can be found in the individual course description.

If you have not met the entry recommendation for a particular course you will need to:

- **Either** be given special permission by the Head of Faculty to do the courses (in some cases holiday tasks will be set)
- **Or** be required to do courses which will enable you to meet the entry requirement the following year.

**A member of staff will discuss your programme with you before it is finalised.**



# NATIONAL QUALIFICATIONS & NCEA

The National Certificate in Educational Achievement (NCEA) is part of the National Qualification Framework. The aim of this framework is to give every person the chance to receive national recognition for their skills and to provide opportunities for ongoing learning.

Y11	Level 1	National Certificate of Educational Achievement Level 1
		National Certificate of Employment Skills;
Y12	Level 2	National Certificate of Educational Achievement Level 2
Y13	Level 3	National Certificate of Educational Achievement Level 3
	4	National Certificate
	5	Certificate   Diploma
	6	Certificate   Diploma
	7	Graduate Certificate   Graduate Diploma   Bachelor's Degree
	8	Postgraduate Certificate   Graduate Diploma   Bachelor's Honours Degree
	9	Master's Degree
	10	Doctoral Degree

**NCEA** is achieved from Achievement Standards and Unit Standards. A typical Achievement Standard:

... is worth a certain number of <b>credits</b> (e.g. 5)				
...may be an <b>internal</b> ...		...or <b>external</b> assessment		
...and offers four grades:	<b>Not Achieved</b>	<b>Achieved</b>	<b>Merit</b>	<b>Excellence</b>

*Note: Most unit standards only offer Achieved or Not Achieved grades.*

## Endorsements

- **Certificate endorsement:** For an NCEA certificate to be endorsed with Merit or Excellence, you must gain 50 credits at Merit or Excellence at the level of the certificate or above.
- **Course endorsement.** Course endorsement shows you have performed exceptionally well in an individual course in a single school year. A course endorsement is not a qualification. You have to achieve:
  - 14 or more credits at Achieved, Merit or Excellence, and
  - At least 3 of these credits from externally assessed standards and 3 credits from internally assessed standards. *Note this does not apply to Physical Education, Religious Studies and Level 3 Visual Arts.*
- **NCEA Level 2** has vocational pathway endorsement. See [www.youthguarantee.net.nz](http://www.youthguarantee.net.nz) for information.

# STUDY BEYOND WHS

## University Entrance requirements

University Entrance (UE) is the minimum requirement to go to a New Zealand university. To qualify you will need:

- **NCEA Level 3 (60 credits)**
- **Three approved subjects** at Level 3 - 14 credits or more for each. See the current list of approved subjects and standards at <https://www.nzqa.govt.nz/qualifications-standards/awards/university-entrance/approved-subjects/>
- **Literacy** - 10 credits at Level 2 or above made up of:
  - 5 credits in reading
  - 5 credits in writing
- **Numeracy** – 10 credits at Level 1 or above made up of:
  - achievement standards – specified achievement standards available through a range of subjects, or
  - unit standards - package of three numeracy unit standards (26623, 26626, 26627- all three required).

Full information can be found here:

<https://www.nzqa.govt.nz/qualifications-standards/awards/university-entrance/>

**The courses that include UE approved standards, literacy and numeracy are noted throughout this book at the bottom of each course which offers them.**

**Ad Eundem Statum** - Students who have attended school overseas and have an acceptable equivalent to the University Entrance requirements apply for Ad Eundem.

**Special Admission** - New Zealand students who are 20 years or older may apply for Special Admission. Application forms are available from the Admissions Office or the Liaison Office at the university.

## University Guaranteed Entry Score (GES)

University Entrance will entitle you to entry to university but it may not immediately get you into the course you wish to study. In addition to the university entrance requirement, **some universities work on a GES (Guaranteed Entry Score) for different degrees.** There is more information in relation to Guaranteed Entry Scores on the school website with links to university admission pages. Go to [www.whs.school.nz/ncea-information](http://www.whs.school.nz/ncea-information)

## Entry to Polytechnic

Polytechnics have close links with industry so their qualifications are relevant to the modern workplace. Tutors often come from the very industries for which you are training, so that you are equipped with the most relevant and up-to-date skills for your career.

Entry to polytechnics varies for each course and you must find the information from the polytechnic or careers information at school. If you are interested, see Careers Advisor, Chuni Bhikha, in the Careers Office on M Block Level 4 (M410)

# COURSES OVERVIEW

## Arts Faculty

ART, PAINTING, PHOTOGRAPHY, DRAMA, DESIGN & MUSIC — from page 14

Y10	Drama Music Visual Arts	Y11	Arts – fine arts focus Arts – digital media focus Drama Toi Māori Music	L2	Design Printmaking Sculpture Painting Photography Drama Toi Māori Music	L3	Design Printmaking Sculpture Painting Photography Drama Toi Māori Music
-----	-------------------------------	-----	---	----	--	----	--

## English Faculty

ENGLISH LITERATURE — from page 19

Y10	English	Y11	English English Project based	L2	English English for Writers English with Religion Painted Word* Classical Studies with English** English Project based Painted Word* Science Fiction Studies	L3	English Literature English and Philosophy English Skills Painted Word*
-----	---------	-----	----------------------------------	----	--	----	--

\*This is a combined course with Arts

\*\*This is a combined course with Social Sciences – see Social Sciences for Classics with English information

## Health & Physical Education Faculty

OUTDOOR EDUCATION, SPORT SCIENCE, HEALTH & RECREATION — from page 24

Y10	Health Education Physical Education Sport Science	Y11	Health Education Outdoor Education Physical Education Sport Science	L2	Health Education Outdoor Education Physical Education Sport Science	L3	Health Education Outdoor Education Physical Education Sport Science
-----	---	-----	--	----	--	----	--

## Languages Faculty

CHINESE, JAPANESE, TE REO MĀORI & SPANISH — from page 28#

Pre-NCEA		Basic English Language Beginner English Language					
Y10	Chinese Japanese Spanish Te Reo Māori	Y11	Chinese Pre-Intermediate English Language Japanese Te Reo Māori Spanish Māori Performing Arts Māori Studies	L2	Chinese Intermediate English Language Japanese Māori Performing Arts Te Reo Māori Spanish Māori Studies	L3	Chinese Advanced English Language Japanese Te Reo Māori Immersion Spanish Māori Performing Arts Māori Studies

## Learning Support

STUDY SUPPORT (invitation only) — see page 34

LIFE SKILLS THROUGH NUMERACY AND LITERACY (He Kākano only) — see page 34

## Mathematics Faculty

ALGEBRA, STATISTICS, CALCULUS & NUMERACY — from page 35

Y10	Mathematics	Y11	Mathematics Numeracy for English Language learners Numeracy	L2	Mathematics Finance	L3	Mathematics Calculus Statistics Finance
-----	-------------	-----	---	----	------------------------	----	--

## Science Faculty

SCIENCE, BIOLOGY, CHEMISTRY, PHYSICS, HORTICULTURE & EARTH SPACE SCIENCE — from page 38

Y10	Science	Y11	Nature of Science Science for English Lang. Learners Horticulture	L2	Biology Chemistry Physics Earth & Space Science Horticulture Science	L3	Biology Chemistry Physics Earth & Space Science Horticulture Science
-----	---------	-----	--	----	--	----	--

## Social Sciences Faculty

HISTORY, GEOGRAPHY, MEDIA, CLASSICS, LEGAL & SOCIAL STUDIES — from page 43

Y10	Business Studies Classical Studies Media Studies Social Studies	Y11	Business Studies Heroic Journeys of the ancient world Global Studies History Media Studies Activism and change Journalism	L2	Business Studies Geography History Moving Image Culture Classical Studies with English* Psychology Journalism Papa Taiao Sociology	L3	Economics Geography History Moving Image Culture Classical Studies Psychology Journalism Papa Taiao Sociology
-----	--	-----	---	----	--	----	--

## Technology Faculty

DIGITAL TECH, DESIGN, ELECTRONICS, ENGINEERING, FOOD & FASHION — from page 51

Y10	Computer Science Digital Media Design Tech Workshop DVC Fashion Food Tech.	Y11	Animation Computer Science Design and Technology Workshop Design Visual Communication Electronics Game Design General Business Computing Fashion & Textiles Food Technology Hospitality Furniture and Cabinet Making Mechanical Engineering Sonic Arts	L2	Barista Skills Electronics Computer Networking Computer Science Design & Technology Workshop Design Visual Communication General Business Computing Fashion & Textiles Food Technology Furniture and Cabinet Making Hospitality Mechanical Engineering Practical Workshop Sonic Arts	L3	Electronics Computer Science Design Visual Communication Fashion & Textiles Food Technology Hospitality Practical Workshop Sonic Arts
-----	---	-----	--	----	---	----	---

## Trades & Careers

TRADES ACADEMY, EMPLOYMENT SKILLS & ENVIRONMENTAL STUDIES — from page 60

L2	Pathways Course Trades Academy Gateway / STAR Courses  Training & study beyond WHS	L3	Trades Academy Gateway / STAR Courses  Training & study beyond WHS
----	--	----	---

# CROSS CURRICULAR COURSES

We offer a number of courses that combine learning areas. Course descriptions are included in the first of the Faculty areas listed.

Y11	Toi Māori (Arts / Languages)	L2	Classical Studies with English (Social Sciences / English)  Painted Word (English / Arts)  English - Project Based  English with Religion (English / Social Sciences)  Toi Māori (Arts / Languages)	L3	Painted Word (English / Arts)  English with Philosophy (English / Social Sciences)  Toi Māori (Arts / Languages)
-----	------------------------------	----	---	----	--

# MULTI-LEVEL COURSES

The following courses can offer standards at more than one level. Descriptions are included at each level in the relevant Faculty area.

Y11	<b>Arts / Languages Faculty</b> Toi Māori  <b>Languages Faculty</b> Māori Performing Arts Māori Studies  <b>Technology Faculty</b> Electronics Furniture and cabinet making Sonic Arts	L2	<b>Arts / Languages Faculty</b> Toi Māori  <b>Languages Faculty</b> Māori Performing Arts Māori Studies Te Reo Māori Immersion  <b>Social Sciences Faculty</b> Papa Taiao  <b>Technology Faculty</b> Electronics Furniture and cabinet making Sonic Arts	L3	<b>Arts / Languages Faculty</b> Toi Māori  <b>Languages Faculty</b> Māori Performing Arts Māori Studies Te Reo Māori Immersion  <b>Social Sciences Faculty</b> Papa Taiao  <b>Technology Faculty</b> Sonic Arts
-----	--	----	--	----	---

# NEW COURSES FOR 2024

Descriptions for new courses can be found in the relevant Faculty section.

Y11	<b>Science Faculty</b> Nature of Science  <b>Social Sciences Faculty</b> Heroic Journeys of the Ancient World Global Studies Activism and Change  <b>Technology Faculty</b> Animation Game Design Sonic Arts	L2	<b>English Faculty</b> Science Fiction Studies	L3	-
-----	---	----	---	----	---



# ARTS | NGĀ TOI

Head of Faculty – Rachel Clark

Y11	Arts – fine arts focus Arts – digital media focus Drama Music Toi Māori	L2	Design Printmaking Sculpture Painting Photography Drama Music Painted Word Toi Māori	L3	Design Printmaking Sculpture Painting Photography Drama Music Painted Word Toi Māori
-----	---	----	--	----	--

Year 11 Art students select either ARD112 or ART112

## ART PACKS

Art packs are a separate cost to the Donation and **must** be ordered from [www.naskits.co.nz](http://www.naskits.co.nz).

Click on Wellington High School, select the course you are entered for. Follow prompts for online payment.

Kits are delivered, named, to the WHS Art Department.

### Y11 | ART112

#### ART – FINE ART FOCUS

**If you are interested in art and would like to refine your skills in art making processes this is the course for you.**

Pathway: This course prepares you for APT223, ASC223, APR223, DES223 and PHO223

##### Course components

- Develop skills in art making techniques using wet and dry media.
- Explore art making processes of drawing, painting, sculpture and printmaking
- Resolve ideas by producing your own original artwork for a portfolio.

5	\$40	□
EXTERNAL CREDITS	DONATION Plus Art pack (\$70).	ENTRY Open



### Y11 | ARD112

#### ART – DIGITAL ART FOCUS

**If you are interested in digital media in art and would like to explore Photoshop, Illustrator, photography and animation, this is the course for you.**

Pathway: This course prepares you for APT223, ASC223, APR223, DES223 and PHO223

##### Course components

- Develop photographic skills and digital art making processes
- Explore digital creation and manipulation using Adobe suite
- Resolve ideas by producing your portfolio of digital art.

5	\$40	□
EXTERNAL CREDITS	DONATION Plus Art pack (\$50).	ENTRY Open

### Y11 | DRA112

#### DRAMA

**Senior Drama is a year programme offering students Year 11, NCEA Levels 2 and 3, plus UE and Scholarship. It is a flexible, co-constructed course, moulded to individual student needs. Drama is a collaborative, group-based subject with a high attendance requirement.**

Pathway: This course prepares you for DRA223

##### Course components

- Use Drama techniques
- Devise and perform a drama
- Rehearse and perform in a production

5	\$40	□
EXTERNAL CREDITS	DONATION Plus Art pack (\$70).	ENTRY Open



## Y11 / L2 / L3 | TOI000

### TOI MĀORI

Through this course students will focus on traditional and contemporary Māori art. Students will develop skills through carving, weaving and will explore the depth of meaning to understand "What makes Māori art, Māori?" Students will have the opportunity to take standards in Art History, Visual Arts and Toi Māori.

Pathway: This course prepares you to Toi Māori study at tertiary level, creative arts industries, arts and culture spaces

#### Course components

These will be developed in partnership with the students who sign up for the course

See below	\$40	□
<b>INTERNAL CREDITS</b> Y11 - 5 L2 and L3 - 12	<b>DONATION</b> Plus Art pack (\$65).	<b>ENTRY</b> Open

## Y11 | MUS112

### MUSIC

This course builds on skills you have learnt in Year 10. You will perform on your chosen instrument, compose your own original songs and instrumental pieces, and learn music theory and history. If you have over two years' experience playing music, this is the course for you.

Pathway: This course prepares you for MUS223

#### Course components

- Prepare for group performances
- Perform as a soloist
- Write original compositions and songs
- Explore a range of musical scores and genres

It is strongly recommended that students taking a senior music course sign up for itinerant music lessons at school or have an instrumental tutor.

5	\$0	□
<b>INTERNAL CREDITS</b>	<b>DONATION</b> Free itinerant instrument or vocal lessons	<b>ENTRY</b> Year 10 Music or by audition as required. Basic music theory knowledge.

## Level 2

Level 2 Visual Arts students have the option of choosing up to two visual arts courses.

## L2 | DES223

### DESIGN

In this course, you develop and present ideas visually through drawing and digital manipulation to communicate ideas using image and text.

Pathway: This course prepares you for DES335, PHO335

#### Course components

- Explore techniques by hand and in Photoshop
- Develop an understanding of the design process and working to a brief
- Create a portfolio of work based on skills you have learnt

12	8	\$40	□
<b>EXTERNAL CREDITS</b> Course endorsement offered	<b>INTERNAL CREDITS</b>	<b>DONATION</b> Plus a self-supplied Art pack (\$50)s	<b>ENTRY</b> Recommended previous experience in Year 11 Art

## L2 | APR223

### PRINTMAKING

In this course, you will develop skills using a range of printmaking techniques including monotype, woodblock, intaglio etching and their processes. You will apply these skills to produce a portfolio of work.

Pathway: This course prepares you for APR335

#### Course components

- Develop skills in traditional and contemporary drawing practice
- Develop skills in a range of printmaking processes
- Study contemporary artists
- Create a portfolio of work based on skills you have learnt

12	8	\$40	□
<b>EXTERNAL CREDITS</b> Course endorsement offered	<b>INTERNAL CREDITS</b> Maximum	<b>DONATION</b> Plus a self-supplied Art pack (\$70).	<b>ENTRY</b> Recommended previous experience in Year 11 Art

## L2 | ASC223

### SCULPTURE

In this course, you become familiar with a range of sculptural practices that include installation, time-based and object based art. You learn how to work in a systematic way to develop your ideas to make a body of work for a portfolio.

Pathway: prepares you for ASC335

#### Course components

- Begin to understand the technical and communicative conventions of sculpture making
- Develop a series of related works
- Focus on developing a portfolio of work

12	8	\$40	□
<b>EXTERNAL CREDITS</b> Course endorsement offered	<b>INTERNAL CREDITS</b> Maximum	<b>DONATION</b> Plus a self-supplied Art pack (\$70)s	<b>ENTRY</b> Recommended previous experience in Year 11 Art



## L2 | APT223

### PAINTING

In this course, you will develop your skills in painting techniques and develop your ideas based on your own choice of subject matter.

Pathway: This course prepares you for APT335

#### Course components

- Become aware of the different approaches to how paintings can be created
- Develop skills in a related series of works
- Create your own portfolio of paintings

12	8	\$40	□
<b>EXTERNAL CREDITS</b> Course endorsement offered	<b>INTERNAL CREDITS</b>	<b>DONATION</b> Plus Art pack (\$70).	<b>ENTRY</b> Recommended previous experience in Year 11 Art

## L2 | PHO223

### PHOTOGRAPHY

This course is a practical course covering camera handling, composition plus digital and physical manipulation of photographs. You will use these skills to create your own body of work for a portfolio.

Pathway: This course prepares you for PHO335

#### Course components

- Learn about contemporary art practice in photography
- Create your own portfolio of work
- Use photography to explore the world around you

You are welcome to purchase your own camera for this course. Owning your own camera is a bonus for this course and we do have school cameras available. Please see your Photography teacher for camera information.

12	8	\$40	□
<b>EXTERNAL CREDITS</b> Course endorsement offered	<b>INTERNAL CREDITS</b>	<b>DONATION</b> Plus Art pack (\$50).	<b>ENTRY</b> Recommended previous experience in Year 11 Art

## L2 | DRA223

### DRAMA

Senior Drama is a 3 year programme that offers students NCEA Levels 1- 3, plus UE and Scholarship. It is a flexible, co-constructed course that is moulded to individual student needs. Drama is a collaborative, group based subject with a high attendance requirement.

Pathway: This course prepares you for DRA335.

#### Course components

- Use drama techniques in a scripted context
- Devise and perform a drama
- Rehearse and perform in a production
- Examine techniques and theatre technologies
- Group work and attendance are essential.

4	14	\$65	□
<b>EXTERNAL CREDITS</b> Optional. Course endorsement offered	<b>INTERNAL CREDITS</b> Literacy credits offered	<b>DONATION</b> For theatre visits	<b>ENTRY</b> Completed Level 1 Drama, or by audition as required

## L2 | MUS223

### MUSIC

This course builds on skills learned in Year 11. You will perform on your chosen instrument, compose songs and/or instrumental pieces, and have the option to analyse music works in depth or continue to develop your theory.

Pathway: This course prepares you for MUS335.

#### Course components

- Prepare for group performances
- Perform as a soloist
- Write original compositions and songs
- Explore a range of musical scores and genres
- Perform on a second instrument (optional)

It is strongly recommended that students taking a senior music course sign up for itinerant music lessons at school or have an instrumental tutor.

6	19	\$0	✓
<b>EXTERNAL CREDITS</b> Course endorsement offered	<b>INTERNAL CREDITS</b> Maximum	<b>DONATION</b> Free itinerant instrument or vocal lessons	<b>ENTRY</b> Interview and audition as required. Music theory knowledge

## Level 3

Level 3 Visual Arts students can choose up to two visual arts courses.

## L3 | APR335

UE / SCHOL

### PRINTMAKING

This course extends your printmaking skills in new ways. You will develop ideas based on a theme of your choice.

Pathway: This course can lead to university, art school and jobs in creative industries.

#### Course components

- Extend your skills in contemporary printmaking
- Reflect and respond to art and your own work
- Learn how to produce a substantial body of work for a folio

14	8	\$40	✓
<b>EXTERNAL CREDITS</b> Maximum	<b>INTERNAL CREDITS</b> Maximum	<b>DONATION</b> Plus Art pack (\$70)	<b>ENTRY</b> Level 2 Art 12 credits or proven ability, interview upon enrolment

## L3 | DES335

UE / SCHOL

### DESIGN

This course further develops your understanding of the design process from Level 2. You combine creative thinking with digital technology to communicate ideas through image and text, conceptualising and realising a personal design project for a client.

Pathway: This course can lead to university, art school, and jobs in creative industries

#### Course components

- Design as problem-solving
- Establishing a client's requirements
- Writing and working to a brief
- Use a variety of art and design practices, and be prepared to work digitally to bring ideas to fruition for a folio

14	8	\$40	✓
<b>EXTERNAL CREDITS</b> Course endorsement offered	<b>INTERNAL CREDITS</b> Maximum	<b>DONATION</b> Plus Art pack (\$60)	<b>ENTRY</b> Level 2 Art 12 credits or proven ability, interview upon enrolment

## L3 | ASC335

UE / SCHOL

### SCULPTURE

Further develop your sculpture making skills around a theme of your choice.

Pathway: This course prepares you for tertiary studies, art school and creative industries such as Weta workshop.

#### Course components

- Develop skills in creative problem solving in 3-dimensional form
- Investigate New Zealand and international contemporary sculpture
- Learn how to reflect and respond to art and your own art work
- Learn how to produce a substantial body of work for a folio

14	8	\$40	✓
<b>EXTERNAL CREDITS</b> Course endorsement offered	<b>INTERNAL CREDITS</b> Literacy credits offered	<b>DONATION</b> Plus Art pack (\$70)	<b>ENTRY</b> Level 2 Art 12 credits or proven ability, interview upon enrolment

**L3 | APT335**

UE / SCHOL

**PAINTING**

This a practical course that builds on the skills that you have developed in Level 2. You will develop a body of work based around a theme of your choice.

Pathway: This course prepares you for university, art school, and jobs in creative industries.

**Course components**

- Develop and extend your skills and understanding of historic and contemporary painting practice
- Learn how to reflect and respond to art and your own art work
- Focus on developing a portfolio of work.

14	8	\$40	☑
<b>EXTERNAL CREDITS</b> Maximum	<b>INTERNAL CREDITS</b> Maximum	<b>DONATION</b> Plus Art pack (\$70)	<b>ENTRY</b> Level 2 Art 12 credits or proven ability, interview upon enrolment

**L3 | PHO335**

UE / SCHOL

**PHOTOGRAPHY**

This course extends your photography skills in new and innovative ways. You develop ideas based on a theme of your choice.

Pathway: This course can lead to university, art school and employment in creative industries.

**Course components**

- Develop and refine skills in creative problem solving
- Learn how to reflect and respond to art and your own art work
- Produce a substantial body of work for a folio

Owning your own camera is a bonus for this course, however, we do have school cameras available.

14	8	\$40	☑
<b>EXTERNAL CREDITS</b> Maximum	<b>INTERNAL CREDITS</b> Maximum	<b>DONATION</b> Plus Art pack (\$60)	<b>ENTRY</b> Level 2 Art 12 credits or proven ability, by interview

**L3 | DRA335**

UE / SCHOL

**DRAMA**

This course builds on skills learnt in Level 2 and has a strong focus on performance. There are three public performance opportunities: production, scripted and devised.

Pathway: This course prepares you for University, Toi Whakaari, teacher training, performing arts training, and any field of interest that requires confidence and communication skills.

**Course components**

- Devise an original drama
- Rehearse and perform in a major production
- Demonstrate understanding of a live theatre performance
- Interpret drama techniques
- Group work and attendance are essential

4	14	\$65	☑
<b>EXTERNAL CREDITS</b> Optional. Course endorsement offered	<b>INTERNAL CREDITS</b> Literacy credits offered	<b>DONATION</b> For theatre visits	<b>ENTRY</b> 14 Level 2 credits in Drama, or by audition as required

**L3 | MUS335**

UE / SCHOL

**MUSIC**

This course builds on the skills and knowledge learned in Level 2 Music. It offers various learning areas in performance, song writing, composition and musical research. You focus on specialising your skills across one or two of these strands.

Pathway: This course prepares you for university study or music school.

**Course components**

- Explore a significant work by a major artist or composer
- Perform as a soloist and member of a group
- Perform on a second instrument (optional)
- Write original composition and/or songs

It is strongly recommended that students taking a senior music course sign up for itinerant music lessons at school or have an instrumental tutor.

4	32	\$0	☑
<b>EXTERNAL CREDITS</b> Course endorsement offered	<b>INTERNAL CREDITS</b> Most students will sit around 20 of the credits on offer. Literacy credits offered	<b>DONATION</b> Free itinerant instrument or vocal lessons	<b>ENTRY</b> Interview and audition as required.

# ENGLISH | INGARIHI

Head of Faculty – Caitlin Reilly

Y11	English English Project Based	L2	English English for Writers English with Religion English Project Based Painted Word* Classical Studies with English**	L3	English English and Philosophy English Project Based Painted Word*
-----	----------------------------------	----	---	----	---

\*This is a combined course with Arts | \*\* See Social Sciences for Classics information

## Y11 | ENG112

### ENGLISH

If you enjoy the dynamic energy of learning with the whole class and prefer to study texts as a group then ENG112 is your dream course. In this course, you will look at how important issues are explored in a range of texts that help us understand our world better. You will learn to discuss confidently the way visual language is used to present ideas to us and you will develop your confidence and skills in writing, reading, discussing and presenting.

Pathways: This course can lead to Level 2 English courses (ENG223, ENW223, ENR223)

#### Course components

- Engagement with a wide range of texts
- A range of opportunities to write for different purposes and audiences
- Development of oral presentation skills
- Close reading skills tested in an external exam

You are expected to bring a laptop to class

5	\$0	<input checked="" type="checkbox"/>
EXTERNAL CREDITS	DONATION	ENTRY Open

## Y11 | EPB122

### ENGLISH PROJECT BASED

If you are a great self-manager and prefer to select your own texts to study and topics to write and speak about, then EPB112 is the course for you.

In 2024, EPB112 students will spend time studying self-selected texts and sharing their ideas and insights through writing, presenting and speaking. Students will map their own pathway to develop skills related to the English curriculum.

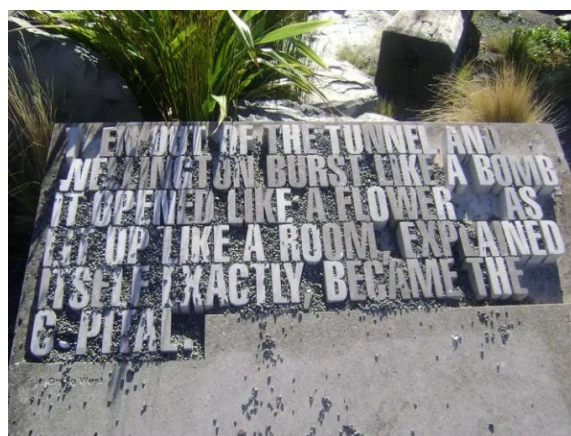
Pathways: This course can lead to any Level 3 English course; or tertiary courses or employment

#### Course components

- Personal mentoring and review with your teacher, peers and the wider community will be an important component of this course.
- Assessments will arise from your interests and passions

You are expected to bring a laptop to class.

5	\$tbc	<input checked="" type="checkbox"/>
EXTERNAL CREDITS	DONATION	ENTRY Open





# Level 2

At Level 2 students can take CLE223, ENR223 and PWD223 in conjunction with other English courses. Students cannot take a combination of ENG223, EPB023 or ENW223.

## L2 | ENG223

### ENGLISH

We are surrounded by many different messages in this modern world and it is important to understand how we are all affected by what we read, see and hear. In ENG223 you will conduct an investigation into the social implications of the way ideas are presented to us. You will learn about the conventions found in a range of written texts and practise writing in a variety of styles, both creative and transactional.

Pathway: This course can lead to any Level 3 English course.

#### Course components

- Developing an understanding of genre conventions
- Developing further skills in writing, with an emphasis on reading, film and presenting
- Opportunities to learn and demonstrate information literacy skills exploring a topic of interest to you

You are expected to bring a laptop to class. Entry without the entry recommendations will be negotiated on an individual basis.

8	13	\$ TBA	✓
<b>EXTERNAL CREDITS</b> Course endorsement offered	<b>INTERNAL CREDITS</b> UE Literacy credits	<b>DONATION</b> Trips and outings as appropriate	<b>ENTRY</b> 13 achievement standard credits in Level 1 English

## L2 | ENR223

### ENGLISH WITH RELIGION

Are you interested in the various beliefs and faiths that make our world so diverse? In this course, you will study world religions and their influence and representation in the realm of literature. You will look at religions through a philosophical lens, and use texts dealing with religion as a context for applying key English skills.

Pathway: This course can lead to any Level 3 English course

#### Course components

- You will gain an overview of a range of world religions, and improve your overall 'religious literacy'
- You will explore issues and themes across these religions, with an emphasis on contemporary issues and events
- Opportunities will be provided for you to focus in more depth on one religion, looking at a range of literary texts with links to this religion
- Religious Studies standards will be offered alongside English standards

You are expected to bring a laptop to class. Entry without the entry recommendations will be negotiated on an individual basis.

8	20	\$ TBA	✓
<b>EXTERNAL CREDITS</b> Course endorsement offered	<b>INTERNAL CREDITS</b> UE Literacy credits	<b>DONATION</b> Trips and outings as appropriate	<b>ENTRY</b> 13 achievement standard credits in Level 1 English



## L2 | ENS223

### SCIENCE FICTION STUDIES

Do you dream of Electric Sheep? Are you enthralled by the way writers and directors offer us imagined futures? Enrol in this course and explore the genre of science fiction and how it can help us understand the present and relates to the future.

Pathway: This course can lead to any Level 3 English course.

#### Course components

- Reading and reviewing Science Fiction texts
- Researching the history of the Science Fiction genre
- Presenting to your classmates
- Developing writing, reading and close viewing skills

You are expected to bring a laptop to class. Entry without the entry recommendations will be negotiated on an individual basis

8	14	\$ TBA	☑
<b>EXTERNAL CREDITS</b> Course endorsement offered	<b>INTERNAL CREDITS</b> UE Literacy credits	<b>DONATION</b> Trips and outings as appropriate	<b>ENTRY</b> 13 credits in Level 1 English or Classics.

## L2 | PWD223

### PAINTED WORD

If you would like to learn more about famous art, and find out more about the art you like, then this course is for you. You will explore how to talk about and write about art, visit galleries and hear from curators and dealers.

Pathway: This course can lead to PWD335

#### Course components

- Studying artists and artistic movements through documentaries and written materials
- Visiting galleries in Wellington
- Researching your favourite artists and sharing your findings with your classmates

You are expected to bring a laptop to class. Entry without the entry recommendations will be negotiated on an individual basis

8	14	\$ TBA	☑
<b>EXTERNAL CREDITS</b> Course endorsement offered.	<b>INTERNAL CREDITS</b> UE Literacy credits.	<b>DONATION</b> Trips and outings as appropriate.	<b>ENTRY</b> 13 credits in Level 1 English or Classics

## L2 | ENW223

### ENGLISH FOR WRITERS

If you really enjoy writing and would like the opportunity to develop your skills as an author, this is the course for you. The focus will be on what makes great writing and you will read texts and think about how they could inspire your own work.

Pathway: This course can lead to any Level 3 English course.

#### Course components

- Using other authors' work as models for your own writing
- The chance to workshop and develop your writing
- Opportunities to deepen your study of written literature

You are expected to bring a laptop to class. Entry without the entry recommendations will be negotiated on an individual basis

8	14	\$ TBA	☑
<b>EXTERNAL CREDITS</b> Course endorsement offered	<b>INTERNAL CREDITS</b> UE Literacy credits	<b>DONATION</b> Trips and outings as appropriate	<b>ENTRY</b> 13 credits in Level 1 English or Classics.

## L2/3 | EPB023

### ENGLISH PROJECT BASED

If you are a great self-manager and prefer to select your own texts to study and topics to write and speak about, then EPB023 is for you.

In 2024, EPB023 students will spend time studying self-selected texts and sharing their ideas and insights through writing, presenting and speaking. Students will map their own pathway to develop skills related to the English curriculum.

Pathways: This course can lead to any Level 3 English course; or tertiary courses or employment

#### Course components

- Personal mentoring and review with your teacher, peers and the wider community will be an important component of this course.
- Assessments arise from your interests and passions

You are expected to bring a laptop to class. Entry without the entry recommendations will be negotiated on an individual basis.

4-8	12-16	\$TBA	✓
EXTERNAL CREDITS	INTERNAL CREDITS	DONATION	ENTRY 13 credits in L1 English; 12 credits from a L2 English course, UE literacy

## Level 3



**L3 | ENG335****UE****ENGLISH LITERATURE**

This a course for those who love reading and critically analysing texts, or who are intending to study a text based subject at university.

In ENG335, you will take your study of literature to the next level and look at the way literature can act as an agent for disruption and as a challenge to the status quo. Be prepared to extend yourselves by engaging with a variety of literature that may touch on adult themes and is aimed at adult readers and viewers. You will learn to tackle academic texts such as literary criticisms and articles on literary theory. You will explore literary theories, such as Freudian theory and Feminist literary theory, and apply them to texts to gain new meanings. You will also develop your expository writing and discussion skills in preparation for further study.

Pathway: Tertiary courses or employment.

**Course components**

- The continued study of written and visual texts
- An in-depth study in which you will learn how to apply literary theories to texts
- Opportunities to further develop and demonstrate writing and speaking skills

You are expected to bring a laptop to class. Entry without the entry recommendations will be negotiated on an individual basis.

8	11	\$ TBA	☑
<b>EXTERNAL CREDITS</b> Course endorsement offered	<b>INTERNAL CREDITS</b> Literacy credits	<b>DONATION</b> Trips and outings as appropriate	<b>ENTRY</b> UE literacy 12 credits from a Level 2 English course including AS91101 and AS91105

**L3 | ENG334****UE****ENGLISH SKILLS**

This course runs for 2 hours per week for students who need UE literacy credits.

Pathway: Tertiary courses or employment.

**Course components**

- The continued study of written and visual texts
- An in-depth study in which you will learn how to apply literary theories to texts
- Opportunities to further develop and demonstrate writing and speaking skills

You are expected to bring a laptop to class. Entry without the entry recommendations will be negotiated on an individual basis.

8	11	\$ TBA	☑
<b>EXTERNAL CREDITS</b> Course endorsement offered	<b>INTERNAL CREDITS</b> Literacy credits	<b>DONATION</b> Trips and outings as appropriate	<b>ENTRY</b> For those who need UE literacy or who like aspects of English but don't want to engage with academic literary ideas or texts.

**L3 | ENP335****UE****ENGLISH WITH PHILOSOPHY**

You will gain an overview of the history of philosophy and apply philosophical concepts to literature, with an emphasis on rich discussions.

Pathway: Tertiary course or employment.

**Course components**

- An emphasis on the use of logic and reason
- There is a strong focus on discussions in this course
- The study of philosophical ideas in books and films
- Opportunities to further develop and demonstrate writing skills

You are expected to bring a laptop to class. Entry without the entry recommendations will be negotiated on an individual basis.

8	13	\$ TBA	☑
<b>EXTERNAL CREDITS</b> Course endorsement offered	<b>INTERNAL CREDITS</b> Literacy credits	<b>DONATION</b> Trips and outings as appropriate	<b>ENTRY</b> 12 credits from a L2 English course UE literacy

**PAINTED WORD**

What is art? How can art further our understanding of contemporary issues such as cultural appropriation, racism and feminism? If you love art and are interested in how artists think, create and critically communicate ideas in their work, this is for you. This course helps develop an appreciation and understanding of art through the ages with emphasis on Modern American and New Zealand art. You will study extraordinary periods of rapid and exciting change.

This course runs for 2 hours a week. You are expected to do independent reading and viewing between lessons.

Pathway: Tertiary courses or employment.

**Course components**

- You will visit galleries and hear from artists and curators.
- The English aspects will involve writing around Art History themes and investigating the connections between visual and written art
- Most credits will be from the Art History domain.

4	16	\$ TBA	<input checked="" type="checkbox"/>
<b>EXTERNAL CREDITS</b> Assessments to be negotiated.	<b>INTERNAL CREDITS</b> Literacy credits. Assessments to be negotiated.	<b>DONATION</b> Trips and outings as appropriate. Bring a laptop to class.	<b>ENTRY</b> 14 credits from a L2 English course (including U.E. Literacy) and an interest in art.

# HEALTH & PHYSICAL EDUCATION | TE TARI AKORANGA KOIRI ME TE HAUORA

Head of Faculty – Natalie Bell, Jason Reddish (Acting)

Y11	Health Education Physical Education Outdoor Education Sport Science	L2	Health Education Outdoor Education Physical Education Sport Science	L3	Health Education Outdoor Education Physical Education Sport Science
-----	--	----	--	----	--

## Y11 | HED112

### HEALTH EDUCATION

Health is a course based around life, love, loss and the struggles you have along the way. You will develop resilience and positive skills to help you become a confident, assertive and reassured individual.

Pathways: This course can lead to HED223.

#### Course components

- Take action to enhance an aspect of personal wellbeing.
- Interpersonal skills used to improve relationships
- Understand strategies for promoting positive sexuality
- Health-enhancing decisions in drug-related situations
- High literacy requirement

5	\$0	<input checked="" type="checkbox"/>
INTERNAL CREDITS	DONATION	ENTRY Open



## Y11 | ODE122

### OUTDOOR EDUCATION

Outdoor Education offers a unique opportunity for students to engage with their local whenua, develop a variety of life skills, build confidence in themselves and inspire others to live life to the fullest. The course is designed for students who want outdoor experiences that will enhance personal and social development through adventure activities on the ocean and on the land.

Pathways: This course can lead to ODE223.

#### Course components

- Our Local Space.
- Group Dynamics, Group Development & Roles.
- Leadership Styles & Strategies.
- Risk Management & Safety Practices.
- Survivor Skills - Bivy Building, Fire Lighting, Plant Identification.
- Personal & Social Responsibility in the Outdoors.
- Sustainability.
- Trip Design & Planning.
- Career Trajectories - Where can you go from here?

6	\$390	<input checked="" type="checkbox"/>
INTERNAL CREDITS	DONATION \$150 course fee; \$110 for tramp and \$120 for CastlePoint trip	ENTRY Open

## Y11 | PED112

### PHYSICAL EDUCATION

This course is aimed at students who enjoy the practical side of Physical Education. You will learn how to reflect on your personal involvement in sport and leisure activities and identify factors that influence your enjoyment. You will be assessed in a team and individual sport context and run a Sports Education model with a focus on interpersonal skills.

Pathways: This course can lead to PED223.

#### Course components

- Explain factors that influence participation
- Quality movement in sport
- Demonstrate interpersonal skills
- Develop strategies to improve performance

5	\$0	<input checked="" type="checkbox"/>
INTERNAL CREDITS	DONATION	ENTRY Open

## Y11 | SPS112

### SPORTS SCIENCE

This course aims to extend your knowledge and understanding of Physical Education. You will be involved in developing performance improvement programs, studying functional anatomy in practical sporting contexts and demonstrating interpersonal skills in a sports education environment.

Pathways: This course can lead to SPS223.

#### Course components

- Understand the function of the body as it relates to performance of physical activity.
- Quality movement in the performance of a physical activity
- Societal influences on physical activity and the implications for self and others
- High literacy requirement

5	\$0	<input checked="" type="checkbox"/>
INTERNAL CREDITS	DONATION	ENTRY Open

## Level 2

## L2 | HED223

### HEALTH EDUCATION

You will examine adolescent issues and the possible short and long-term consequences on your well-being. You will also develop, implement and evaluate a plan to enhance hauora of students in our school or in our community.

Pathway: This course can lead to HED335.

#### Course components

- Evaluate factors that influence people's ability to manage change
- Take action to enhance an aspect of people's well-being
- Analyse an interpersonal issue(s) that places personal safety at risk
- High literacy requirement

4	10	\$0	<input checked="" type="checkbox"/>
EXTERNAL CREDITS Course endorsement offered	INTERNAL CREDITS Literacy credits	DONATION Nil	ENTRY 10 credits in Level 1 Health Education

## L2 | ODE223

### OUTDOOR EDUCATION

Our Outdoor Education course offers you the stimulating combination of the challenges of the natural environment, the excitement of taking more self-responsibility and the joy of finding worth and value in one's self. The teaching and learning emphasis in the Level 2 Outdoor Education course is to enhance resilience, self-organisation, self-dependence and responsibility.

Pathway: This course can lead to ODE335.

#### Course components

- Risk management strategies in outdoor activity
- Demonstrate social responsibility
- Examine the implementation and outcomes of an event or opportunity
- Demonstrate quality movement in sport

0	19	\$600	<input checked="" type="checkbox"/>
EXTERNAL CREDITS Course endorsement offered	INTERNAL CREDITS Literacy credits	DONATION \$150 course fee; \$450 ski trip	ENTRY 10 Credits Level 1 Outdoor Education

## L2 | SPS223

### SPORT SCIENCE

Sports Science includes a range of physical activities, fitness and training programmes and a look at the significance for self and society of a sporting event. You will learn how to apply biomechanical knowledge, sports psychology techniques and motor skill learning theories to training programs as you learn in, through and about movement.

Pathway: This course can lead to SPS335.

#### Course components

- Apply biophysical principles in a sports context
- Evaluate strength training programme
- Demonstrate quality movement in sport
- Examine the significance of a sporting event.

0	16	\$0	<input checked="" type="checkbox"/>
<b>EXTERNAL CREDITS</b> Course endorsement offered	<b>INTERNAL CREDITS</b> Maximum	<b>DONATION</b> Nil	<b>ENTRY</b> Passed Achievement Standard 90963

## L2 | PED223

### PHYSICAL EDUCATION

An interest and commitment to playing sports and developing skills is essential. You will develop advanced physical skills in a number of different contexts, including team, individual and outdoor pursuit activities. You will complete a 3 day camp at a high and low ropes course with a focus on self-management and social responsibility.

Pathway: This course can lead to REC334.

#### Course components

- Demonstrate quality movement in sport
- Demonstrate social responsibility
- Participation in adventure based learning
- High and low ropes course

0	24	\$0	<input checked="" type="checkbox"/>
<b>EXTERNAL CREDITS</b>	<b>INTERNAL CREDITS</b> Unit standards	<b>DONATION</b>	<b>ENTRY</b> Open

## Level 3

### L3 | HED335

UE

### HEALTH EDUCATION

You will explore a range of attitudes, values and different practices that support/ undermine health and well-being. Topics include health practices, New Zealand and international health issues and the debate surrounding ethical issues. You are posed with issues that face the youth of today and are given the chance to make recommendations for change.

Pathway: This course can lead to university entrance and careers in the health industry.

#### Course components

- Analyse a New Zealand health issue
- Evaluate health practices currently used in New Zealand
- Analyse a contemporary ethical issue in relation to well-being
- Analyse a New Zealand health issue

5	14	\$0	<input checked="" type="checkbox"/>
<b>EXTERNAL CREDITS</b> Course endorsement offered	<b>INTERNAL CREDITS</b> Literacy credits	<b>DONATION</b> Nil	<b>ENTRY</b> 10 credits in level 2 Health Education

### L3 | SPS335

UE

### SPORT SCIENCE

You will take a detailed look at biophysical principles using video analysis, and learn how these apply to your own performance improvement. You will plan, implement and evaluate a skill improvement programme, utilising skill learning theories and sports psychology. You will challenge assumptions around performance improvement theories and examine the role money plays in New Zealand sport.

Pathway: This course is university approved and leads to careers in the sports and leisure industry.

#### Course components

- Analyse a physical skill using biomechanical knowledge
- Evaluate the effectiveness of a performance programme
- Demonstrate quality movement in sport
- Examine a current physical activity, event, trend or issue and its impact on New Zealand society

0	16	\$0	<input checked="" type="checkbox"/>
<b>EXTERNAL CREDITS</b> Course endorsement offered	<b>INTERNAL CREDITS</b> Literacy credits	<b>DONATION</b> Nil	<b>ENTRY</b> 10 credits in Level 2 Sport Science

**L3 | ODE335****UE****OUTDOOR EDUCATION**

This course is a student-centred programme where you will learn to challenge yourself mentally, physically, socially and emotionally. The integrated approach within this course allows for practical activities, theoretical concepts, and relationship with the environment to be incorporated into a meaningful programme of learning. The course aims to develop self-awareness and leadership through opportunities to plan for, and facilitate outdoor experiences.

Pathway: This course is a university approved course and can lead to a career in adventure tourism, ecotourism and careers in the outdoor industry.

**Course components**

- Devise strategies for lifelong well-being
- Demonstrate quality movement in sport
- Examine a current physical activity event, trend or issue and its impact on New Zealand society.
- Devise safety management strategies

0	20	\$550	<input checked="" type="checkbox"/>
<b>EXTERNAL CREDITS</b> Course endorsement offered	<b>INTERNAL CREDITS</b> Literacy credits	<b>DONATION</b> \$150 course fee and \$400 Whanganui river trip	<b>ENTRY</b> 10 credits in Level 2 Outdoor Education

**L3 | PED334****PHYSICAL EDUCATION**

You will develop advanced physical skills in a number of different contexts, including team sports, adventure based learning, fitness activities and mountain biking. You will learn how to plan coaching sessions, completing a coaching qualification.

**Course components**

- Demonstrate quality performance in sport
- Demonstrate leadership while participating in adventure based learning activities
- Develop skills in mountain biking
- Develop and run a sports coaching session

0	24	\$0	<input checked="" type="checkbox"/>
<b>EXTERNAL CREDITS</b>	<b>INTERNAL CREDITS</b> Unit standards	<b>DONATION</b> Nil	<b>ENTRY</b> Open



# LANGUAGES | NGĀ REO

Head of Faculty – Sharon Henry

Pre-NCEA		Basic English Language Beginner English Language	
Y11	Chinese Pre-Intermediate English Language Japanese Te Reo Māori Spanish Māori Studies Māori Performing Arts	L2	Chinese Intermediate English Language Japanese Te Reo Māori Spanish Māori Studies Māori Performing Arts
		L3	Chinese Advanced English Language Japanese Te Reo Māori Immersion Spanish Māori Studies Māori Performing Arts

## Pre-NCEA | ENL000

### BASIC ENGLISH LANGUAGE

This course is designed to help students who have little or no English Language ability.

Pathways: This course can lead to ENL010 Beginner English Language.

#### Course components

- Alphabet recognition
- Learning to recognise, read and write basic words and sentences
- Improve listening and spoken communication skills
- Understand basic instructions

0	\$0	<input checked="" type="checkbox"/>
CREDITS	DONATION	ENTRY
		By prior arrangement with the Head of Department

## Pre-NCEA | ENL010

### BEGINNER ENGLISH LANGUAGE

This course is for non-native English speakers who have basic competence in English. This is an intensive 8 hour per week course that aims to increase students' knowledge of useful English in New Zealand.

Pathways: This course can lead to ENL021 Pre-Intermediate English

#### Course components

- Improve listening comprehension and speaking confidence
- Develop writing and reading skills
- Develop grammatical accuracy and paragraphing skills
- Improve vocabulary

15	\$0	<input checked="" type="checkbox"/>
INTERNAL CREDITS	DONATION	ENTRY
For Year 12-13 students only		By prior arrangement with the Head of Department



# Year 11

## Y11 | CHI112

### CHINESE

This course focuses on Chinese language that is useful for everyday situations, such as daily routines, weekends, school life, travel and shopping.

Pathways: This course can lead to Level 2 Chinese.

#### Course components

- Demonstrate understanding of a variety of spoken and written Chinese texts
- Give a spoken presentation in Chinese
- Interact using spoken Chinese

5	\$0	☑
<b>INTERNAL CREDITS</b> Maximum	<b>DONATION</b>	<b>ENTRY</b> Year 10 Chinese and Head of Department approval

## Y11 | ENL021

### PRE-INTERMEDIATE ENGLISH LANGUAGE

This course is for non-native English speakers who wish to gain the skills required for the national literacy standards

Pathways: This course can lead to ENL032 Intermediate English Language.

#### Course components

- Demonstrate understanding of a variety of written and spoken English texts.
- Write a variety of simple texts in English.

10	\$0	☑
<b>INTERNAL CREDITS</b> NCEA Literacy	<b>DONATION</b>	<b>ENTRY</b> Completion of ENL010 or by prior arrangement with the Head of Department

## Y11 | JPN112

### JAPANESE

This course focuses on language that is useful for you to communicate in everyday situations in Japan. It also includes a murder mystery!

Pathway: This course can lead to Level 2 Japanese.

#### Course components

- Demonstrate understanding of a variety of spoken and written Japanese texts
- Interact using spoken Japanese
- Write a variety of text types in Japanese

5	\$0	☑
<b>INTERNAL CREDITS</b> Maximum	<b>DONATION</b>	<b>ENTRY</b> Year 10 Japanese, hiragana proficiency and Head of Department approval

## Y11 | MAO112

### TE REO MĀORI

This course will extend your use of te reo by looking at topics related to teenage life.

Pathway: The aim of this course is to build communicative competencies in Te Reo Māori. This course can lead to Level 2 Te Reo Māori.

#### Course components

- Demonstrate understanding of a variety of spoken and written Te Reo Māori texts
- Create a portfolio of spoken Te Reo Māori
- Build understanding of tikanga Māori

6	\$0	☑
<b>INTERNAL CREDITS</b> Maximum	<b>DONATION</b>	<b>ENTRY</b> Year 10 Japanese, hiragana proficiency and Head of Department approval





## Y11 | SPA112

### SPANISH

This course focuses on language that is useful for you to communicate in everyday situations in Spanish speaking countries. It also includes a Treasure Hunt, and Latin American and Spanish cooking and music.

Pathway: This course can lead to Level 2 Spanish.

#### Course components

- Demonstrate understanding of a variety of spoken and written Spanish texts
- Give a spoken presentation in Spanish
- Interact using spoken Spanish
- Write a variety of text types in Spanish

6	\$0	<input checked="" type="checkbox"/>
INTERNAL CREDITS Maximum	DONATION	ENTRY Year 10 Japanese, hiragana proficiency and Head of Department approval

## Y11 / L2 / L3 | MPA000

### MĀORI PERFORMING ARTS

This course is for you if you want to do Kapa Haka. The course will cover a range of waiata, haka and mōteatea. It is strongly encouraged that if you take this course, you also join Te Whānau a Taraika (the school Kapa Haka rōpū). You can still participate in Kapa Haka if you don't take this course.

Pathway: This course can lead to further credits in Māori Performing Arts at a higher level. Please note credits will be negotiated with the Kaiako depending on your year level.

#### Course components

- Waiata-ā- ringa
- Poi
- Mōteatea
- Haka and Mau rākau
- Whakaraka
- Māori Theatre

0	20	\$0	<input checked="" type="checkbox"/>
EXTERNAL CREDITS	INTERNAL CREDITS Maximum	DONATION	ENTRY Open

## Y11 / L2 / L3 | MST000

### MĀORI STUDIES

This course will look at aspects of te ao Māori and is for those who are interested in finding more about the Māori culture and history from a Māori perspective. Due to the multi-level nature of this course, students will only be offered Level 2 and 3 standards.

Pathway: Students will be given assessment opportunities to attain credits at their own NCEA level and these are optional.

#### Course components

- Local events and their impact
- Māori art and its significance
- Matariki
- The history of Aotearoa pre-1840

0	15	\$0	<input checked="" type="checkbox"/>
EXTERNAL CREDITS	INTERNAL CREDITS Maximum	DONATION	ENTRY Open

## Level 2

## L2 | CHI223

### CHINESE

This course focuses on furthering communication skills so that you can justify your ideas on topics such as lifestyles, the best places for holidays, health issues, and planning a birthday party.

Pathway: This course can lead to Level 3 Chinese.

#### Course components

- Demonstrate understanding of a variety of spoken and written Chinese texts
- Give a spoken presentation in Chinese
- Interact using spoken Chinese
- Write a variety of text types in Chinese

10	14	\$0	<input checked="" type="checkbox"/>
EXTERNAL CREDITS Course endorsement offered	INTERNAL CREDITS Maximum	DONATION	ENTRY CHI112 and Head of Department approval

## L2 | ENL032

### INTERMEDIATE ENGLISH LANGUAGE

This course is for non-native English speakers who have Level 1 Literacy but do not yet have the skills to attain UE literacy. Level 2 unit standards can be gained through this course.

Pathways: This course can lead to ENL043 Advanced English Language.

#### Course components

- Demonstrate understanding of spoken information in English on familiar topics
- Read and understand texts in English on familiar topics
- Write a variety of text types in English on familiar topics
- Converse and present information verbally

0	20	\$0	☑
<b>EXTERNAL CREDITS</b>	<b>INTERNAL CREDITS</b> Maximum	<b>DONATION</b>	<b>ENTRY</b> Completion of ENL010 or by prior arrangement with the Head of Department

## L2 | JPN223

### JAPANESE

This course focuses on furthering communication skills so that you can justify your ideas on topics such as cooking, school and teen issues.

Pathway: This course can lead to Level 3 Japanese.

#### Course components

- Demonstrate understanding of a variety of spoken and written Japanese texts
- Give a spoken presentation in Japanese
- Interact using spoken Japanese
- Write a variety of text types in Japanese

10	14	\$10	☑
<b>EXTERNAL CREDITS</b> Course endorsement offered	<b>INTERNAL CREDITS</b> Maximum	<b>DONATION</b> For optional hardcopy workbooks	<b>ENTRY</b> JPN112 and Head of Department approval

## L2 | MAO223

### TE REO MĀORI

In this course, you use te reo to look at your aspirations and dreams. You will begin to form and present your own ideas in te reo.

Pathway: This course can lead to Level 3 Te Reo Māori.

#### Course components

- Demonstrate understanding of a variety of spoken and written Te Reo Māori texts
- Create a portfolio of spoken Te Reo Māori
- Write a variety of text types in Te Reo Māori

12	12	\$0	☑
<b>EXTERNAL CREDITS</b> Maximum	<b>INTERNAL CREDITS</b> Literacy credits	<b>DONATION</b>	<b>ENTRY</b> MAO112 and Head of Department approval

## L2 | SPA223

### SPANISH

This course focuses on furthering communication skills so that you can justify your ideas on topics such as tourism, school and teen issues. Latin American and Spanish cooking and music are also part of this course.

Pathway: This course can lead to Level 3 Spanish.

#### Course components

- Demonstrate understanding of a variety of spoken and written Spanish texts
- Give a spoken presentation in Spanish
- Interact using spoken Spanish
- Write a variety of text types in Spanish

10	14	\$10	☑
<b>EXTERNAL CREDITS</b> Course endorsement offered	<b>INTERNAL CREDITS</b> Maximum	<b>DONATION</b> For optional hardcopy workbooks	<b>ENTRY</b> SPA112 and Head of Department approval

# Level 3

## L3 | CHI335

UE / SCHOL

### CHINESE

This course develops language skills that allow you to argue different points of view on topics such as teen issues, school systems, food, travel and future plans.

Pathway: This course can lead to Stage 2 Chinese at university.

#### Course components

- Demonstrate understanding of a variety of spoken and written Chinese texts
- Give a spoken presentation in Chinese
- Interact using spoken Chinese
- Write a variety of text types in Chinese

10	14	\$0	✓
<b>EXTERNAL CREDITS</b> Course endorsement offered	<b>INTERNAL CREDITS</b> Maximum	<b>DONATION</b>	<b>ENTRY</b> CHI223 and Head of Department approval

## L3 | ENL043

UE

### ADVANCED ENGLISH LANGUAGE

This course is for non-native English speakers who wish to gain University Entrance Literacy. It requires a reasonably high level of English language competency.

Pathways: This course can be studied in conjunction with Level 2 English (ENG223)

#### Course components

- Developing skills to write formal academic essays
- Reading and understanding academic texts

0	12	\$0	✓
<b>EXTERNAL CREDITS</b>	<b>INTERNAL CREDITS</b>	<b>DONATION</b>	<b>ENTRY</b> Completion of ENL233 or by prior arrangement with the Head of Department

## L3 | JPN335

UE / SCHOL

### JAPANESE

This course develops language skills that allow you to argue different points of view on topics such as social and environmental issues, or art and music.

Pathway: This course can lead to Stage 2 Japanese at university.

#### Course components

- Demonstrate understanding of a variety of spoken and written Japanese texts
- Give a spoken presentation in Japanese
- Interact using spoken Japanese
- Write a variety of text types in Japanese

10	14	\$10	✓
<b>EXTERNAL CREDITS</b> Course endorsement offered	<b>INTERNAL CREDITS</b> Maximum	<b>DONATION</b> For optional hardcopy workbooks	<b>ENTRY</b> JPN223 and Head of Department approval

## L2 / L3 | MAI035

UE / SCHOL

### TE REO MĀORI IMMERSION

This course is designed to extend the level of fluent te reo Māori speakers by studying in a language immersion environment. Topics will be based on student interest.

Pathway: This course can lead to Stage 1 and 2 Te Reo Māori at university.

#### Course components

- Demonstrate understanding of a variety of spoken and written Te Reo Māori texts
- Create a portfolio of spoken Te Reo Māori
- Write a variety of text types in Te Reo Māori

12	16	\$0	✓
<b>EXTERNAL CREDITS</b> Course endorsement offered	<b>INTERNAL CREDITS</b> Literacy credits	<b>DONATION</b>	<b>ENTRY</b> MAO223 and Head of Department approval

**SPANISH**

This course develops language skills that allow you to argue different points of view. Topics include topical issues such as immigration and gender. You can choose topics of study that interest you.

Pathway: This course can lead to Stage 2 Spanish at university.

**Course components**

- Demonstrate understanding of a variety of spoken and written Spanish texts
- Give a spoken presentation in Spanish
- Interact using spoken Spanish
- Write a variety of text types in Spanish

10	14	\$10	<input checked="" type="checkbox"/>
<b>EXTERNAL CREDITS</b> Maximum	<b>INTERNAL CREDITS</b> Maximum	<b>DONATION</b> For optional hardcopy workbooks	<b>ENTRY</b> SPA223 and Head of Department approval

### Y11 | LSS100

#### STUDY SUPPORT

This course is an 'invite only' option for students who need support to achieve NCEA. There are no NCEA credits on offer.

- This course is developed around student needs as required.
- Support to develop organisation and time management skills relevant to school.
- Unpacking and understanding assessment tasks from other subjects.
- Structured time for students to work on assessments, homework, and classwork from other subjects in school, with support.
- Opportunity to develop social, communication and life skills in a small setting.

0	0	\$0	☑
EXTERNAL CREDITS	INTERNAL CREDITS	DONATION	ENTRY Invitation only — discuss with HoF Learning Services

### Y11 | HKO100

#### LEARNING SKILLS FOR LIFE

This course is a compulsory subject for all ORS funded He Kākano students unless the Dean/HoF Learning Services and He Kākano Lead teacher have granted an exemption. **Note: this course does not apply to ORS funded students participating in a full NCEA programme. It will run for a full day each week and will also include 1 Line which will have to be selected. There are no NCEA credits on offer although supported learning unit standards may be offered. This means that He Kākano students will only be able to choose a maximum of 5 other subjects with HKO100 being selected as a compulsory subject.**

#### Course components

- Support to develop life skills enabling students to increase their independence. This may include budgeting, cooking, taking public transport, transition planning for life after school and the use of literacy and numeracy skills in practical ways.
- Supported standards may be used in conjunction with developing life skills.

0	0	\$0	☑
EXTERNAL CREDITS	INTERNAL CREDITS	DONATION	ENTRY Invitation only — discuss with HoF Learning Services

# MATHEMATICS | PĀNGARAU

Head of Faculty — Suzanne Meijer

Y11	Mathematics Numeracy Numeracy for English Language Learners	L2	Mathematics Finance	L3	Mathematics Calculus Statistics Finance
-----	--	----	------------------------	----	--

## Y11 | MAT112 MATHEMATICS

This is for year 11 students and offers both a chance to complete a statistical enquiry and the opportunity to choose the topics in whichever areas of the curriculum you are interested in and / or need for your future career path.

Pathway: This course leads on to MAT223 in year 12

### Course components

- Algebra
- Geometry and measurement
- Probability
- Statistics

5	\$8/\$20	<input checked="" type="checkbox"/>
<b>INTERNAL CREDITS</b> from the statistical enquiry	<b>DONATION</b> \$8 per work book and \$20 subscription to Education Perfect. Laptop. Calculator	<b>ENTRY</b> Achieved the numeracy co-requisite.

## Y11 | MAT012 MATHEMATICS

This course is designed for students who find a more teacher directed learning course in Mathematics suit them. Students will develop their number, statistics and measurement skills

Pathway: This course leads on to MAT223 in year 12

### Course components

- Number
- Statistics
- Measurement

5	\$8/\$20	<input checked="" type="checkbox"/>
<b>INTERNAL CREDITS</b> from the statistical enquiry	<b>DONATION</b> \$8 per work book and \$20 subscription to Education Perfect. Laptop. Calculator.	<b>ENTRY</b> Achieved the numeracy co-requisite.

## Y11 | NUM112 NUMERACY

Develop important life skills and allow people to fully engage in work and their communities. Students will cover the content required for the numeracy co-requisite as well as further developing their statistical knowledge through the enquiry process. This course is designed for students who do not yet have the numeracy co-requisite.

Pathway: This course can lead to Finance – FIN223

### Course components

- Number
- Statistics
- Measurement

Note: The numeracy co-requisite is required to get any NCEA certificate.

10	\$20	<input checked="" type="checkbox"/>
<b>INTERNAL CREDITS</b> From the numeracy co-requisite.	<b>DONATION</b> \$20 subscription to Education Perfect. You will need a scientific calculator	<b>ENTRY</b> Achieved the numeracy co-requisite.



## Y11 | SNE112

### NUMERACY FOR ENGLISH LANGUAGE LEARNERS

This course partners SNE112 – Science for English Language Learners. Students must take both courses.

This course enables you to work on basic skills in number, measurement and statistics while improving your English. It focuses on preparing students for the numeracy co-requisite.

Pathway: This course can lead to Finance – FIN223 or MAT112 with the agreement of the Head of Faculty.

#### Course components

- Number
- Statistics / Probability
- Measurement
- Geometry

Note: 10 numeracy credits, from the co-requisite, are required to get any NCEA certificate

10	\$8/\$20	☑
<b>INTERNAL CREDITS</b> from the numeracy co-requisite.	<b>DONATION</b> \$8 per work book and \$20 subscription to Education Perfect. Laptop. Calculator	<b>ENTRY</b> Achieved the numeracy co-requisite.

## Level 2

### L2 | MAT223 MATHEMATICS

This is for year 12 students and offers a choice of Level 2 standards in whichever areas of the curriculum you are interested in or need for your future career path. Some Level 3 credits may be available. You should choose a minimum of 4 standards.

Pathway: This course can lead to Calculus or Statistics or Mathematics in year 13 (depending on the standards you choose)

#### Course components

- Algebra
- Geometry and measurement
- Probability
- Statistics

Note: 10 Level 1 Numeracy credits are required for UE

12	TBC	\$8/\$25	☑
<b>EXTERNAL CREDITS</b> Maximum. Course endorsement offered	<b>INTERNAL CREDITS</b> Numeracy credits & some literacy credits	<b>DONATION</b> \$8 per workbook &/or \$20 for a subscription to Education Perfect. calculator and laptop	<b>ENTRY</b> At least 4 standards from MAT123 / 10 Level 1 Maths credits

## L2 | FIN223

### FINANCE

This course focuses on managing money in everyday life. You will learn how to make informed decisions about spending and saving money and how to adapt to changing financial situations, through an online banking system (Banquer)

Pathway: This courses supports the development of skills for application in real-life and leads on to FIN330

#### Course components

- Personal income and budgeting
- Taxation
- Banking
- Insurance

0	10	\$20	☑
<b>EXTERNAL CREDITS</b>	<b>INTERNAL CREDITS</b> Maximum	<b>DONATION</b> For workbooks and Banquer	<b>ENTRY</b> Level 1 Numeracy

## Level 3

### L3 | MAT335 MATHEMATICS

UE

This course is for those who want to carry on with maths and includes a mixture of algebra, statistics and discrete mathematics.

Pathway: This course can lead to tertiary study in associated courses.

#### Course components

- Algebra
- Statistics
- Probability
- Critical path analysis

4	16	\$40	☑
<b>EXTERNAL CREDITS</b> Course endorsement offered	<b>INTERNAL CREDITS</b> Numeracy & some literacy credits	<b>DONATION</b> For workbooks. You also need a laptop or equivalent (a phone is not sufficient).	<b>ENTRY</b> Credits from 4 standards including AS 91267(2.12) (external).  AS 91263 (2.8) and/or AS91264 (2.9) would be advantageous



**L3 | MAC335**

UE /

**SCHOL****CALCULUS**

This course is centred on the further development of calculus and its applications. It should be a first choice for you if you are hoping to do further study in mathematics, physical sciences, engineering (including computing), graphics and economics.

Pathway: This course can lead to tertiary study in mathematics or associated courses.

**Course components**

- Differentiation
- Integration
- Algebra
- Trigonometry

17	4	\$43	✓
<b>EXTERNAL CREDITS</b> Course endorsement offered	<b>INTERNAL CREDITS</b> Numeracy credits	<b>DONATION</b> For workbooks. You also need a laptop or equivalent (a phone is not sufficient).	<b>ENTRY</b> Credits from 4 standards including AS91262 (2.7) and merit in AS91261 (2.6). AS91587 (3.15) would be advantageous.

**L3 | FIN330****FINANCE**

This course focuses on external factors that impact on your income, setting realistic budgets, developing plans to achieve financial goals and looking at credit options and their implications and risks.

Pathway: This course supports the development of skills for application in real-life, through the use of an online banking system (Banqer).

**Course components**

- Managing income
- Setting goals and budgeting
- Spending and transacting
- Credit and debt
- Working in a team

0	16	\$20	✓
<b>EXTERNAL CREDITS</b>	<b>INTERNAL CREDITS</b> Maximum	<b>DONATION</b> For workbooks and Banqer	<b>ENTRY</b> Level 1 Numeracy and Literacy

**L3 | MAS335**

UE / SCHOL

**STATISTICS**

This course is centred on the further development of statistics and probability. It should be the first choice for you if you are hoping to do further study in mathematics or statistics, biological and social sciences, commerce and administration.

Pathway: This course can lead to tertiary study in statistics or associated courses.

**Course components**

- Time series
- Bivariate data
- Inference
- Probability

8	12	\$40	✓
<b>EXTERNAL CREDITS</b> Course endorsement offered	<b>INTERNAL CREDITS</b> Numeracy & Literacy credits	<b>DONATION</b> For workbooks. You also need a laptop or equivalent (a phone is not sufficient).	<b>ENTRY</b> Credits from 4 standards including AS 91267 (2.12) (external) and AS91264 (2.9)



# SCIENCE | PUTAIAO

Head of Faculty — Kimberly Fiszer

Y11	Nature of Science Science for English Lang. Learners Horticulture	L2	Biology Chemistry Physics Earth & Space Science Horticulture	L3	Biology Chemistry Physics Earth & Space Science Horticulture
-----	--	----	--	----	--

## Y11 | SCI112

### NATURE OF SCIENCE

**This course involves the practical and theoretical study of selected topics from the three main branches of science. This course allows you to build on your previous learning in science.**

Pathway: This course can lead to understanding the world around you and scientific issues affecting society. It is preparation for specialist study of the sciences in the senior school, which can lead to a variety of scientific careers.

#### Course components

- Acids and Bases
- Mechanics
- Genetic Variation
- Microbiology
- Chemical Reactions

5	\$23	☑
EXTERNAL CREDITS	DONATION For a write-in workbook	ENTRY Open

## Y11 | SCE112

### SCIENCE FOR ENGLISH LANGUAGE LEARNERS

**This course runs with Maths for English Language Learners. Students must take both courses. This course involves investigation, research into scientific ideas and their relationship to our lives. It is designed for students who are looking to improve their proficiency in English and who are interested in Science.**

Pathway: Year 12 Science (SCI223) course.

#### Course components

- A range of internal standards will be offered. These will be determined through discussion with the students and an understanding of their interests in science.

5	\$0	☑
INTERNAL CREDITS	DONATION For a write-in workbook	ENTRY Open



## Y11 | HCL112

### HORTICULTURE

If you are interested in plants, the environment and working outside then you will benefit from this course. This course enables you to develop a working knowledge and basic practical skills in plant propagation and management.

Pathways: This course leads to HCL223 and then either:

1. Polytechnic courses and apprenticeship opportunities in the wide-ranging environmental and horticulture sectors OR
2. HCL335 and university courses

#### Course components

- Basic plant propagation knowledge and skills
- Plant investigations
- Soil management
- Landscape design to meet user needs

6	\$0	<input checked="" type="checkbox"/>
INTERNAL CREDITS	DONATION For a write-in workbook	ENTRY Open

## Level 2

## L2 | BIO223

### BIOLOGY

Biology is the science that focuses on the study of life and living organisms. You will learn how cells interact with their environment and with each other.

Pathway: This course can lead to Level 3 Biology or Level 3 Science.

#### Course components

- Life processes at the cellular level
- Genetic variation and change
- Ecological communities
- Gene expression
- Designing an investigation on Osmosis.

12	8	\$40	<input checked="" type="checkbox"/>
EXTERNAL CREDITS Course endorsement offered	INTERNAL CREDITS Maximum	DONATION for workbook and field trips	ENTRY 12 Level 1 Science credits including Genetic Variation or Microbes or with Head of Faculty approval

## L2 | CHE223

### CHEMISTRY

Chemistry is the study of substances and their interaction with each other and with energy. In this course, you will gain an understanding of the particles involved in each aspect to explain the material world around you.

Pathway: This course can lead to Year 13 Chemistry. It will also help you analyse data and plan practical work and will provide good foundations for Level 3 Chemistry or Science.

#### Course components

- Quantitative analysis
- Inorganic chemical reactions
- Structure, bonding and energy
- Organic reactions
- Oxidation and reduction processes

Note: Maths standard AS 91027 (Algebra) is an entry recommendation as well as the Science standards listed below.

13	10	\$25	<input checked="" type="checkbox"/>
EXTERNAL CREDITS Course endorsement offered	INTERNAL CREDITS Maximum	DONATION For workbook	ENTRY 12 Level 1 Science credits incl. acids and bases, or chemical reactions or with Head of Faculty approval

## L2 | PHY223

### PHYSICS

Physics is the study of the nature and properties of matter and energy. You will carry out practical investigations linked to the concepts studied.

Pathway: This course can lead to Physics at Level 3 and/or tertiary study of physics.

#### Course components

- Radioactivity
- Mechanics
- Electricity and Electromagnetism
- Waves and Optics
- Practical Investigation

Note: Maths standards AS 91027 (Algebra) and AS 91032 (right angled triangles) are entry recommendations as well as the Science standards listed below.

16	7	\$35	<input checked="" type="checkbox"/>
EXTERNAL CREDITS Course endorsement offered	INTERNAL CREDITS Maximum	DONATION For a write-in handbook	ENTRY 12 L1 Science credits incl. Mechanics or with Head of Faculty approval

## L2 | ESS223

### EARTH AND SPACE SCIENCE

You will learn why stars shine, how the planets were formed and what causes earthquakes and forms volcanoes. You will explore a local landform to discover its origins, and find out how some of the hardiest organisms on Earth survive.

Pathway: This course can lead to ESS335 and then either university courses or polytechnic courses leading to a multitude of apprenticeship opportunities in various primary industry sectors.

#### Course components

- Extreme events (volcanoes, earthquakes etc.)
- Stars and planets
- Local rocks and landforms
- Extreme organisms

8	12	\$60	✓
<b>EXTERNAL CREDITS</b> Course endorsement offered	<b>INTERNAL CREDITS</b> Maximum	<b>DONATION</b> Workbook and field trip	<b>ENTRY</b> 4 Level 1 Science credits minimum and Level 1 literacy or, with Head of Faculty approval

## L2 | HCL223

### HORTICULTURE

You will develop a working knowledge and practical skills in commercial plant propagation and plant management. You will enjoy this course if you are interested in one or more of the primary industry horticulture sectors such as viticulture, crop management, biosecurity, plant pathology.

Pathways: This course leads to either:

1. University courses including horticulture science, landscape architecture (city planning), viticulture etc.
2. Polytechnic courses or apprenticeship opportunities in sectors such as landscape construction, arboriculture, plant nursery, botanic gardens.

#### Course components

- Practical plant propagation and management
- Horticultural investigation
- Environmental impact of horticulture

0	20	\$0	✓
<b>EXTERNAL CREDITS</b>	<b>INTERNAL CREDITS</b> Maximum	<b>DONATION</b> Nil	<b>ENTRY</b> Level 1 literacy and numeracy, or with Head of Faculty approval

## Level 3

## L3 | BIO335

UE / SCHOL

### BIOLOGY

Biology is the science of life. It covers the relationships between organisms and the environment. You will explore evolutionary processes, animal behaviour, homeostasis, and biotechnology, developing informed opinions relating to the implications of some of these technologies. Biology helps you to communicate scientifically, think critically, and better understand the world around you.

Pathway: This can lead to tertiary study as part of a science, technology, bio-engineering or medical qualifications.

#### Course components

- Socio-scientific: investigating controversial biological issues & their implications
- Homeostasis: human survival in extreme conditions
- Biotechnology: human manipulation of genetics
- Ecology: animal behaviour and plant responses in the living world.
- Evolution: speciation of plants and animals

9	9	\$50	✓
<b>EXTERNAL CREDITS</b> Course endorsement offered	<b>INTERNAL CREDITS</b> Maximum	<b>DONATION</b> Workbook and field trip	<b>ENTRY</b> 12 Level 2 Science credits or with Head of Faculty approval



**L3 | CHE335**

UE / SCHOL

**CHEMISTRY**

You will build on the knowledge developed in CHE223, focusing on conceptual understanding, and creating connections between the topics studied.

Pathway: This course can lead to tertiary study where it is a prerequisite or part of the many science related courses of study, especially in medicine, the health sector or engineering.

**Course components**

- Structure, bonding, energy and entropy
- Inorganic chemical reactions involving redox and aqueous equilibria
- Organic reactions including polymers
- Spectroscopy
- Oxidation and reduction processes

**15**

**EXTERNAL CREDITS**  
Course endorsement offered

**9**

**INTERNAL CREDITS**  
Maximum

**\$30**

**DONATION**  
For workbook



**ENTRY**  
12 Level 2 Chemistry credits or with Head of Faculty approval

**L3 | ESS335**

UE / SCHOL

**EARTH AND SPACE SCIENCE**

This course ties together many aspects of science to understand important issues such as the environment, pollution and climate change. You can also follow your own interests with personal project work.

Pathway: This course is a good introduction to many university science courses.

**Course components**

- Oceans and Earth's hydrosphere
- Atmosphere
- Life on other planets
- Socio-scientific issues in relation to ESS

**8**

**EXTERNAL CREDITS**  
Course endorsement offered

**12**

**INTERNAL CREDITS**  
Maximum

**\$60**

**DONATION**  
Workbook and field trip



**ENTRY**  
4 Level 1 Science credits and Level 1 literacy, or Level 2 ESS credits, or with Head of Faculty approval

**L3 | PHY335**

UE /

SCHOL

**PHYSICS**

You will study conceptual and mathematical approaches to Physics. You will carry out practical investigations linked to the concepts studied.

Pathway: This course can lead to university study of physics, especially as part of a science, engineering or medical degree.

**Course components**

- Modern Physics
- Mechanics
- Electricity and Electromagnetism
- Waves
- Practical Investigations

Note: Studying Calculus MAC335 is recommended.

**16**

**EXTERNAL CREDITS**  
Course endorsement offered

**7**

**INTERNAL CREDITS**  
Maximum

**\$30**

**DONATION**  
For a write-in handbook



**ENTRY**  
12 Level 2 Physics credits or with Head of Faculty approval

### L3 | HCL335 HORTICULTURE

UE / SCHOL

**You will focus on New Zealand's primary production industries with an emphasis on plant management practices to meet export market requirements and grower profitability.**

**Complementary subjects are: mathematics, biology, business studies and economics.**

Pathway: This course leads to a wide range of tertiary university courses including agriculture, horticulture, commerce, soil science, forestry, environmental science, landscape architecture etc.

#### Course components

- Sensory survey on apple fruit attributes
- Research the profitability of growing grapes for export wines
- Study the production processes of a primary product (apples) to meet specific export market requirements
- Analyse a NZ primary production environmental issue

9	10	\$0	✓
<b>EXTERNAL CREDITS</b> Course endorsement offered	<b>INTERNAL CREDITS</b> Maximum	<b>DONATION</b> Nil	<b>ENTRY</b> 12 credits from any Level 2 Science and Level 2 literacy and numeracy, or with Head of Faculty approval



# SOCIAL SCIENCES | TIKANGA-Ā-IWI

Head of Faculty — Stephen Beckett

Y1 1	Business Studies Heroic Journeys of the Ancient World History Global Studies Media Studies	L2	Business Studies Geography History Moving Image Culture Classical Studies with English* Psychology Journalism Papa Taiao Sociology	L3	Economics Geography History Moving Image Culture Classical Studies Psychology Journalism Papa Taiao Sociology
---------	--	----	--	----	---

## Y11 | BUS112

### BUSINESS STUDIES

This is an introductory commerce course and provides an opportunity for you to undertake study in two subject areas, Economics and Business Studies. Working in groups, you will operate a school based enterprise.

Pathway: This course can lead to BUS223 and other Level 2 Social Science subjects

#### Course components

- The internal operations of a small business
- Apply marketing to a product and carry out and review a business activity
- Understand producer choices using supply and how the market works

5

\$ TBA



INTERNAL CREDITS

DONATION

Capital for small business

ENTRY

Open

## Y11 | CLS112

### HEROIC JOURNEYS OF THE ANCIENT WORLD

This course explores the qualities that define a hero and a heroic journey across multiple times and cultures in the ancient world, from Greece to the Pacific.

Pathway: CLE223 and all Level 2 Social Sciences

#### Course components

- Study the ideas and values in Homer's Odyssey
- Understand links between the classical world and other cultures from around the world
- Understand how to examine primary sources in historical contexts

5

\$0



INTERNAL CREDITS

DONATION

ENTRY  
Open

## Y11 | HIS112

### HISTORY

This course teaches students the skills of an historian including source analysis, engaging with historical perspectives and understanding the relative significance of events in the past. HIS112 will explore topics and events that shaped the world from the 17<sup>th</sup> century to today, both in Aotearoa New Zealand and globally.

Pathway: This course can lead to HIS223 and other Social Science subjects

#### Course components

- Exploring the diverse histories of people in Te Whanganui a Tara
- Racial slavery to Black Lives Matter: a history of Black America's resistance against injustice and oppression.
- Perspectives on war: WWI from the perspective of those left behind.

5

\$ TBA



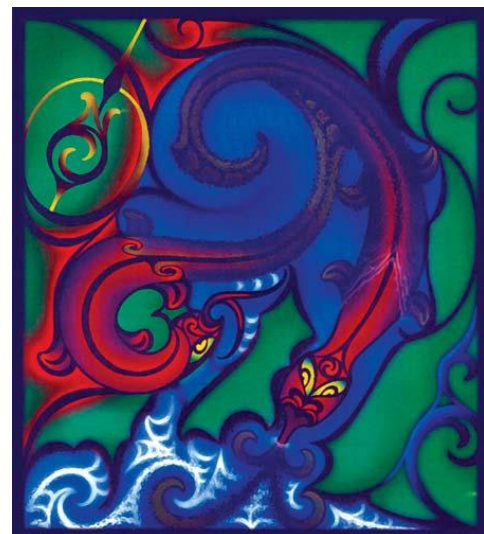
INTERNAL CREDITS

DONATION

There may be a cost for day excursions in the Wellington region.

ENTRY

Open



## Y11 | GEO112 GLOBAL STUDIES

This course focuses on contemporary global issues. What is happening where? Why is it happening there? Why should we care about it? What does the issue look like in Aotearoa? We will explore the issues using local and global case studies.

Pathway: This course can lead to GEO223 and all Level 2 Social Science courses.

### Course components

- Natural processes (tectonic, volcanic and climatic processes)
- Eco-tourism (how humans interact with the natural environment and the consequences)
- Marine sustainability (ocean pollution and microplastics)
- Fresh water quality (impacts of land use and accessibility to fresh water)

We will leave room for global issues that arise during the year, where possible.

We also organise an optional field trip for all Global Studies and senior Geography students. Previous trips have been to Taranaki and Taupō, the 2024 destination is yet to be confirmed.

5	\$TBC	☑
INTERNAL CREDITS	DONATION	ENTRY Open



## Y11 | MDS112 MEDIA STUDIES

This is a practical, introductory course teaching students the basics in film making, podcasting/radio and print journalism.

Pathway: MIC223 or JRN223 and all Level 2 Social Science subjects

### Course components

- Understand basics of film making and post production
- Understand basics of feature writing and magazine design
- Understand basics of podcast production and sound editing
- Understand characteristics of film genre

5	\$0	☑
INTERNAL CREDITS	DONATION	ENTRY Open

## Y11 | SOC112 ACTIVISM AND CHANGE

This course offers the chance to better understand how effective social action and activist strategies occur in various communities, and how best to get involved and either support or challenge the social issues that matter most to you.

Pathway: All Level 2 Social Science subjects

### Course components

- Exploring examples of social actions
- Understanding and connecting with different communities
- Understanding the impacts of activist tactics in different settings
- Finding your social issue and implementing appropriate activist tactics

5	\$0	☑
EXTERNAL CREDITS	DONATION	ENTRY Open





## Y11 | MDS112 MEDIA STUDIES

This is a practical, introductory course teaching students the basics in film making, podcasting/radio and print journalism.

Pathway: MIC223 or JRN223 and all Level 2 Social Science subjects

### Course components

- Understand basics of film making and post production
- Understand basics of feature writing and magazine design
- Understand basics of podcast production and sound editing
- Understand characteristics of film genre

5	\$0	<input checked="" type="checkbox"/>
INTERNAL CREDITS	DONATION	ENTRY Open



## Level 2

## L2 | BUS223 BUSINESS STUDIES

This is a commerce course and provides an opportunity for you to undertake further study in two subject areas: Economics and Business Studies. Working individually or in small groups, you will provide solutions for sustainable business. This will require developing a product concept that contributes to a sustainable future.

Pathway: This course is recommended for ECO335 and other Level 3 Social Science subjects

### Course components

- Analysing growth
- Analysing unemployment
- Carrying out a business activity
- Undertake market research

12	9	\$TBA	<input checked="" type="checkbox"/>
EXTERNAL CREDITS Course endorsement offered	INTERNAL CREDITS Literacy (for UE)	DONATION Capital for small business	ENTRY Level 1 Numeracy and Literacy

## L2 | HIS223 HISTORY

This course explores forces and movements that have influenced change at different times in History. The skills of the historian are developed further and students are challenged to explore perspectives from the past, weigh up the significance of historical events and critically analyse primary and secondary sources.

Pathway: HIS335 and other Level 3 Social Sciences

### Course components

- Explore the histories of black birding in the Pacific and the impact of Eugenics in New Zealand history
- Understand the perspectives and impacts of the 19th century Taranaki Wars
- Explore the competing forces that lead to conflict in Vietnam in the 20th century

5	14	\$ TBA	<input checked="" type="checkbox"/>
EXTERNAL CREDITS Course endorsement offered	INTERNAL CREDITS Literacy credits (for UE)	DONATION Optional Field trip	ENTRY Level 1 Literacy and Level 1 Numeracy

## L2 | GEO223 GEOGRAPHY

Geography is the study of the relationship between humans and the environment. At level two we will investigate inequalities in Aotearoa, population changes in New York City spatial patterns of street art and graffiti in Wellington's CBD, geographic skills and the global issue of human trafficking.

Pathway: Recommended for GEO335 and can lead to other Level 3 Social Science subjects.

### Course components

- Analyse the spatial patterns and significance of the issue of human trafficking.
- Demonstrate understanding of a variety of Geographic skills (mapping and interpreting graphs).
- Analyse temporal patterns of population change in New York City.
- Analyse the issue of child poverty in Aotearoa, perspectives and courses of action.
- Geographic research of your choice based in Wellington's CBD

4	14	\$TBA	<input checked="" type="checkbox"/>
EXTERNAL CREDITS Course endorsement offered	INTERNAL CREDITS Literacy and numeracy credits (for UE)	DONATION Skills book and Field trip to Tongariro	ENTRY Level 1 Numeracy and Literacy

## L2 | MIC223

### MOVING IMAGE CULTURE

You will develop media literacy and understand the use of mass media, particularly film. You will become a critical consumer of the media and use these skills in the production of your own media product – video.

Pathway: This course can lead to MIC335 and other Level 3 Social Science subjects

#### Course components

- Understand the way that narrative and representation influence media texts
- Show understanding of an aspect of a specified genre
- Plan and complete a film using a range of conventions
- This course shares standards with JRN223

4	17	\$ 0	✓
<b>EXTERNAL CREDITS</b> Course endorsement offered	<b>INTERNAL CREDITS</b> Literacy credits (for UE)	<b>DONATION</b>	<b>ENTRY</b> Level 1 Literacy

## L2 | CLE223

### CLASSICAL STUDIES WITH ENGLISH

This course explores the qualities of humour in both classical and modern society as well as delving into events that shaped the classical world. You do not need to take another English course but can if you wish.

Pathway: This course can lead to CLS335 and other Level 3 Social Science subjects and Level 3 English

#### Course components

- Examine ideas and values in the classical world
- Examine significant features of art and architecture
- Understand the relationship between the classical world and other cultures
- Analyse written texts using evidence and produce formal written work
- This course may be taken as an alternative to ENG223 and includes English standards

16	14	\$0	✓
<b>EXTERNAL CREDITS</b> Course endorsement offered	<b>INTERNAL CREDITS</b> Literacy credits (for UE)	<b>DONATION</b>	<b>ENTRY</b> Level 1 Literacy

## L2 | PSY223

### PSYCHOLOGY

Psychology is the scientific study of the mind and behaviour. In this course you will explore theories of memory, personality and addiction. You will also learn about some famous psychological experiments, their ethical issues, and conduct an experiment of your own.

Pathway: This course can lead to Level 3 Social Science subjects

#### Course components

- Examine how psychological debates change over time
- Conduct psychological research with guidance
- Investigate psychological theories and approaches
- Explore ethical issues in psychological practice

0	9	\$ 0	✓
<b>EXTERNAL CREDITS</b>	<b>INTERNAL CREDITS</b> Literacy credits (for UE)	<b>DONATION</b>	<b>ENTRY</b> Level 1 Literacy.

## L2 | SOC223

### SOCIOLOGY

You will draw on Sociology concepts to explore current issues involving the values, perspectives and rights of humans locally and globally. Key concepts include a just transition to zero carbon, our place in a bicultural society, upholding the human rights of others and our part in creating effective solutions to pressing issues through social action.

Pathway: This course can lead to SOC335 and other Level 3 Social Science subjects.

#### Course components

- The ethics of technology including surveillance and artificial Intelligence.
- Free Speech or Hate Speech: a consideration of the tension which can exist between, rights, freedoms and responsibilities.
- Take part in a social action to improve the rights of others.

4	14	\$ 0	✓
<b>EXTERNAL CREDITS</b>	<b>INTERNAL CREDITS</b> Literacy credits (for UE)	<b>DONATION</b>	<b>ENTRY</b> Level 1 Literacy.

## L2 | JRN223

### JOURNALISM

This course focuses on the theoretical and practical production application in understanding and producing print media texts. You will develop tools to analyse and make your own messages and meanings in a media-saturated world. Strong initiative and independence is expected and an ability to meet deadlines is vital

Pathway: This course can lead to Level 3 Social Science subjects

#### Course components

- The role of print media and the written word as a means of communicating news, ideas and opinions
- Develop the principles of layout and various programs such as InDesign and Photoshop
- This course shares standards with MIC223

4	16	\$0	<input checked="" type="checkbox"/>
<b>EXTERNAL CREDITS</b> Course endorsement offered	<b>INTERNAL CREDITS</b> Literacy credits (for UE)	<b>DONATION</b>	<b>ENTRY</b> 12 Credits from MDS112, ENG112 or another Level 1 Social Science



## L2/3 | PPT220

### PAPA TAIAO

Keen to get out of the classroom and be in a team that does something to help your community, and nature?

Papa Taiao Earthcare has two courses that will introduce you to the key environmental and social issues in Wellington/Aotearoa, while empowering you and your team to do something about it with the help of Wellington's sustainability experts. The programme assessment is tailored to individual student strengths and taught through practical work, self-directed learning, overnight camps and mentorship from industry experts.

Pathway: This course can lead to careers in conservation or sustainability-based industries. You can achieve a NZQA Certificate in Land Based Sustainability

There are three courses to choose from

- Regenerative Agriculture: Learn about urban farming by helping at Kai Cycle's urban farms and working to develop your own market garden.
- Social Enterprise: Work at The Sustainability Trust using Wellington's waste streams to develop products to sell.
- Restoration: Help Conservation Volunteers restore Wellington's native forests by learning about trapping, seed saving, tree planting, pest plant management and nursery work.

0	24	\$0	<input checked="" type="checkbox"/>
<b>EXTERNAL CREDITS</b>	<b>INTERNAL CREDITS</b> Literacy and numeracy	<b>DONATION</b>	<b>ENTRY</b> Open



# Level 3

## L3 | ECO335 ECONOMICS

UE

Understanding of advanced economics and the way in which the New Zealand economy operates. Students will be required to conduct individual projects that examine market failure and possible government interventions.

Pathway: This course can lead to tertiary study

### Course components

- How market equilibrium leads to efficiency
- Understanding micro-economic concepts
- Understanding government intervention in the market
- Understanding macro-economic influence in New Zealand

10	10	\$0	✓
<b>EXTERNAL CREDITS</b>	<b>INTERNAL CREDITS</b>	<b>DONATION</b>	<b>ENTRY</b>
Course endorsement offered	Literacy credits for UE		Level 1 Numeracy and Literacy & 12 credits from BUS223 or L2 Social Science

## L3 | HIS335 HISTORY

UE / SCHOL

This programme covers the consequences of competitive territorial expansion. Contrasting historical forces, and how once accepted historical narratives can be challenged.

Pathway: This course can lead to tertiary study, or directly to employment in a wide variety of fields

### Course components

- Consider History as a construct, and the role of the Historian
- Explore contrasting narratives about the history of the Renaissance and the Reformation.
- Evaluate the role of historical forces in both the French and British Empires
- Investigate the data to draw conclusions about change across significant periods of time, reading widely and critically

10	15	\$ TBA	✓
<b>EXTERNAL CREDITS</b>	<b>INTERNAL CREDITS</b>	<b>DONATION</b>	<b>ENTRY</b>
Course endorsement offered	Literacy credits (for UE)	Optional Field trip	12 Credits from HIS223 or another L2 Social Science, English or permission from HoF

## L3 | GEO335

UE / SCHOL

## GEOGRAPHY

Geography is the study of the relationship between humans and the environment. At level three we will investigate inequalities in Aotearoa, events planning from a geographic perspective, conduct geographic research in Wellington's CBD, geographic skills and the global issue of human trafficking.

Pathway: This course can lead to tertiary study

### Course components

- Analyse the spatial pattern and significance of the issue of human trafficking.
- Demonstrate understanding of a variety of Geographic skills (mapping and interpreting graphs).
- Analyse the issue of child poverty in Aotearoa, perspectives and courses of action.
- Geographic research of your choice based in Wellington's CBD.
- Analyse an event from a geographic perspective.

4	14	\$TBA	✓
<b>EXTERNAL CREDITS</b>	<b>INTERNAL CREDITS</b>	<b>DONATION</b>	<b>ENTRY</b>
Course endorsement offered	Literacy and numeracy credits (for UE)	Field trips to Kapiti and Rotorua & skills book	12 Credits from GEO223 or another Level 2 Social Science, English or permission from HoF

## L3 | CLS335

UE / SCHOL

## CLASSICAL STUDIES

You will explore the social, artistic and ideological aspects of the classical world. Particular focus will be on philosophy, mythology, concepts and beliefs of religion and political propaganda.

Pathway: This course can lead to tertiary study

### Course components

- Analyse ideas and values of the classical world
- Analyse the significance of Art in the classical world
- Understand significant ideologies in the classical world
- Understand the influence of the classical world on other cultures

8	12	\$0	✓
<b>EXTERNAL CREDITS</b>	<b>INTERNAL CREDITS</b>	<b>DONATION</b>	<b>ENTRY</b>
Course endorsement offered	Literacy credits		12 Credits in CLE223 or another Social Science or permission from HoF



**L3 | JRN335**

UE / SCHOL

**JOURNALISM**

While exploring detailed implications of news media in Aotearoa, the primary component of this course is the production of *The Flannel* magazine. You assume control of all aspects of production including editorial policy, writing, designing, desktop publishing, and graphics. Students enrolled in JRN335 cannot take MIC335 without discussing with the Head of Faculty.

Pathway: This course can lead to tertiary study, or the world of work

**Course components**

- Show understanding of the relationship between a media genre and society
- Develop and produce a media product that meets a brief
- Write a media text to meet a brief
- Develop skills in various software products to produce a Flannel Article

4	13	\$0	☑
<b>EXTERNAL CREDITS</b> Course endorsement offered	<b>INTERNAL CREDITS</b> Literacy credits (for UE)	<b>DONATION</b> Nil	<b>ENTRY</b> 12 Credits from JRN223, ENG223 or another Level 2 Social Science or permission from HoF.

**L3 | MIC335**

UE / SCHOL

**MOVING IMAGE CULTURE**

You will develop media literacy and understanding using mass media. You will enhance your critical understanding of media messages and develop skills in the production of your short film. Students enrolled in MIC335 cannot take JRN335 without discussing with the Head of Faculty

Pathway: This course can lead to tertiary study or the world of work

**Course components**

- Develop a deeper understanding of the use of media texts
- Show understanding of a media genre and society
- Plan and produce a short film using conventions appropriate to a genre

4	13	\$0	☑
<b>EXTERNAL CREDITS</b> Course endorsement offered	<b>INTERNAL CREDITS</b> Literacy credits (for UE)	<b>DONATION</b>	<b>ENTRY</b> 12 Credits from MIC223 or another Level 2 Social Science subject, or permission from HoF

**L3 | PSY335**

UE

**PSYCHOLOGY**

You will continue to study human nature, the complexities of the mind, identity and what motivates us. Areas explored will include the psychology of relationships, and criminal psychology. You will conduct your own experiment.

Pathway: This course can lead to tertiary study

**Course components**

- Analyse psychological approaches and how theories are used in the field
- Conduct psychological research with consultation
- Analyse the impact key psychological research has had on our society
- Analyse interactions between psychological approaches

0	19	\$0	☑
<b>EXTERNAL CREDITS</b> Course endorsement offered	<b>INTERNAL CREDITS</b> Literacy credits (for UE)	<b>ENTRY</b> 12 Credits from PSY223 or another Level 2 Social Science or permission from HoF	

**L3 | SOC335**

UE

**SOCIOLOGY**

The course explores the effects of powerful social forces and ideologies on communities and individuals, both geo-politically and in small local communities. The competition between value systems and the way resources are allocated are explored.

Pathway: This course leads to tertiary study or the world of work.

**Course components**

- Understand how groups make use of social forces to create change in communities
- Explore how world views and perspectives influence people's views on social issues.
- Learn to develop and communicate a campaign to make positive change in our community

8	16	\$ TBA	☑
<b>EXTERNAL CREDITS</b> Course endorsement offered	<b>INTERNAL CREDITS</b> Literacy credits (for UE)	<b>DONATION</b> There may be a cost for day excursions in the Wellington region	<b>ENTRY</b> 12 Credits from SOC223 or another Level 2 Social Science subject or permission from HoF.

# TECHNOLOGY | HANGARAU

Head of Faculty — Peter Jessop

Y11	Mechanical Engineering Electronics Computer Science Digital Media Design Visual Communication General Business Computing Fashion Food Technology Hospitality Furniture and Cabinet Making Design & Technology Workshop	L2	Mechanical Engineering Electronics Computer Science Digital Media Design Visual Communication General Business Computing Fashion Barista Food Technology Hospitality Furniture and Cabinet Making Practical Workshop Sonic Arts Computer Networking	L3	Electronics Computer Science Digital Media Design Visual Communication Fashion Food Technology Hospitality Practical Workshop Sonic Arts
-----	--	----	--	----	--

## Y11 | MEG112

### MECHANICAL ENGINEERING

This course is for those who wish to develop knowledge and skills in a mostly metal based workshop environment. The course is delivered through engineering projects and is particularly suitable for those who may be interested in engineering-related careers. Projects include metal clamps and a mechanical wind ornament. Health and Safety in the workplace takes a high priority and good attendance is expected to complete these elements of the course.

Pathway: The course allows access to the level 2 Mechanical Engineering course

#### Course components

- A project-based making programme that allows use of a huge range of hand and machine tools

6

INTERNAL  
CREDITS

\$0

DONATION



ENTRY  
Open

## Y11 | ELT112

### ELECTRONICS

This course assumes no prior knowledge of electronics and so is a chance to discover how and why things work in electronics. Students are introduced to a wide range of components and practical projects so you can create a range of circuits. All aspects of electronics are developed from individual components through to a range of microchips as well and programmable circuits and microcontroller.

Pathway: This course leads to the Level 2 and also co-exists with CSC and ANI courses

#### Course components

- Practical projects, designing and building circuits for a wide range of purposes.
- Learning theory as we discover more and more components and what they can be made to do, and why you might want them to do that!

Pathway: The course allows access to ELT223

3

INTERNAL  
CREDITS

\$30

DONATION



ENTRY  
Open





## Y11 | GDD112

### GAME DESIGN

Whether you are interested in storytelling or in technology, into software or more of an artist, you could find yourself at home in Game Design. Especially if you're passionate about games. Gaming is a growing industry, and is now worth more than the film and music industries combined. The New Zealand gaming industry alone grew \$120 million in annual revenue over the past year. Video games themselves have become varied with traditional mainstream titles standing alongside experimental and narrative-driven games.

**You will develop the design thinking and professional studio skills that you'll need to join the industry.**

Pathway: The course leads to ANI223 but could lead to a range of possible real world professions in Wellywood and beyond

#### Course components

- How to design/structure various game genres
- How to work the software to create the game elements that you need
- How to de-bug and enhance the game(s)

3	\$0	<input checked="" type="checkbox"/>
INTERNAL CREDITS	DONATION	ENTRY Open

## Y11 | SON112

### SONIC ARTS

Sonic Arts brings the creative arts and sound design technology together. It involves digital and analogue sources of sound creation. This course will also involve an element of hands on studio engineering. Students will learn to communicate sound via personal projects in film score, and radio release-ready songs. Audio and picture digital technologies such as Adobe Premiere, SERATO, REAPER, REASON, Maya, synths, drum machines, turntables, analogue sources and street samples.

Pathway: Entry into the electronic (and a very valuable step into computing) industries, apprenticeships or universities to develop studies.

#### Course components

- Editing sequencing and manipulation of sound files is at the heart of the course.

2	\$0	<input checked="" type="checkbox"/>
INTERNAL CREDITS (Level 2)	DONATION	ENTRY Open

## Y11 | ANI112

### ANIMATION

Ever wanted to get into the wonderful world of animation? What we do is storyboard and make mini movies, both digitally using Adobe Animate and traditionally with stop frame using real models. You will design your solution to an agreed theme, and then create your masterpiece, editing it with sound, titles etc.

Pathway: The course leads to ANI223 but could lead to a range of possible real world professions in Wellywood and beyond

#### Course components

- How to design and storyboard
- Researching up both the theme and techniques
- Creation of practice then assessment movies

4	\$0	<input checked="" type="checkbox"/>
INTERNAL CREDITS	DONATION	ENTRY Open

## Y11 | CSC112

### COMPUTER SCIENCE

This course is for you if you are interested in programming or computer engineering. CSC112 includes an introduction to algorithms, usability data, encoding, and programming in Java. The major part of the course is designing and programming a chosen project using Java.

Pathway: Level 2 Computer Science course

#### Course components

- Working with algorithms and creating computer programs

5	\$0	<input checked="" type="checkbox"/>
INTERNAL CREDITS	DONATION	ENTRY Open

## Y11 | DTW112

### DESIGN & TECHNOLOGY WORKSHOP

This course has a practical focus on making and developing skills in hard materials such as wood and plastics. Students will make products to a brief that address a real need/ purpose. A wide range of hard materials knowledge is gained as well as the development of skills to work with them.

Pathway: The course leads to DTW223

#### Course components

- Develop making skills in a range of materials
- Develop creative thinking and design skills
- Create a series of practical projects
- Learn how to configure and use a range of machine tools under supervision
- Develop understanding and awareness of H&S issues in a workshop environment

6	\$50	<input checked="" type="checkbox"/>
INTERNAL CREDITS	DONATION	ENTRY Open

## Y11 | DVC112

### DESIGN & VISUAL COMMUNICATION

Test your creativity! DVC is three-dimensional design class, focusing on architecture and product design. If you have an interest in design, this is the course for you! You'll explore, develop, and resolve your own innovative design ideas in response to interesting project briefs. You'll learn to think like a designer, and you'll learn to sketch like a designer. You'll learn an extensive range of visual communication techniques including model-making, and design software. Additionally, you'll learn about graphic design as a presentation tool. Excellent time management skills are required.

The course allows for entry into Level 2 DVC, apprenticeship or gateway (part school, part workshop) opportunities.

#### Course components

Generating design ideas and communicating them through a variety of methods and media.

5	\$25	<input checked="" type="checkbox"/>
INTERNAL CREDITS	DONATION	ENTRY Open

## Y11 | GBC110

### GENERAL BUSINESS COMPUTING

This course offers an all-round computing experience. The course is built on major programs used in business such as word processing, spreadsheets, desktop publishing and so on. There is also a little coding to give a complete selection of possibilities. The varied nature of the units reflects the exciting nature of the course.

Pathway: The course allows access to GBC220

#### Course components

Generating design ideas and communicating them through a variety of methods and media.

2	\$0	<input checked="" type="checkbox"/>
INTERNAL CREDITS	DONATION	ENTRY Open

## Y11 | FTX112

### FASHION + TEXTILES

If you love sewing, and being creative, then this course is for you! Focus on making garments and learning many different fashion processes. Fashion illustration and trips out are part of this course too.

Pathway: The course leads to FTX223

#### Course components

- Develop skills making your own garments
- Develop skills with patterns
- Explore skills and communicate ideas in fashion illustration

6	\$35	<input checked="" type="checkbox"/>
INTERNAL CREDITS	DONATION For practical components towards projects	ENTRY Open

## Y11 | FAC120

### FURNITURE AND CABINET MAKING

This course is aimed at students who enjoy, or feel they would enjoy, working in a workshop environment producing pieces of timber furniture from working drawings. It follows a traditional apprenticeship-style approach. You will gain skills in using woodworking, hand and power tools, as well as processes and materials knowledge. This course is also industry recognised.

Pathway: The course leads to a range of possible industry apprenticeship schemes

#### Course components

- The correct and safe use of hand and power tools, and the construction of furniture pieces

4	\$50	<input checked="" type="checkbox"/>
INTERNAL CREDITS	DONATION	ENTRY Open



## Y11 | FTE112

### FOOD TECHNOLOGY

You will develop your own ideas and skills through cooking, enquiry, and food science. The course meets the needs of any student who is interested in the design and development of food products to meet a need or opportunity in our community.

Pathway: This course leads to FTE223.

#### Course components

- Developing design ideas
- Working with stakeholders from our community
- Understanding of Manaakitanga and Kaitiakitanga in the development of a product in an authentic context
- Selection of materials based on function and food science

3	\$50	<input checked="" type="checkbox"/>
INTERNAL CREDITS	DONATION	ENTRY Open

## Y11 | HOS112

### HOSPITALITY

This course is an introduction to the skills required to work in a commercial kitchen environment. A wide variety of cooking and preparation techniques will be covered to provide a foundation for the year 12 and 13 courses. There is an emphasis on knife skills and safe practice in a food preparation environment.

Pathway: This course leads to HOS223

#### Course components

- Ingredient knowledge and associated cookery methods
- Food preparation skills
- Food safety and hygiene

5	\$0	<input checked="" type="checkbox"/>
INTERNAL CREDITS	DONATION	ENTRY Open

# Level 2

## L2 | CSC223 COMPUTER SCIENCE

This course is for you if you are interested in computer science. The course covers the design and development process of a software project. This includes looking at user implications such as usability and functionality. You will learn to program in Java and will work on a software project of your own choosing. We will also cover an advanced topic in computer science such as Artificial Intelligence or encryption.

Pathway: The level 3 Computer Science course

### Course components

- We focus on planning, coding and program development

3	12	\$0	✓
<b>EXTERNAL CREDITS</b>	<b>INTERNAL CREDITS</b>	<b>DONATION</b>	<b>ENTRY</b>
Maximum Course endorsement offered			10 credits from CSC112 or by consultation

## L2 | ELT223 ELECTRONICS

This is a school based Industry course for those interested in electronics. The course covers theory and practical aspects of electronics. You will finish this course with two fully working electronic devices and a good understanding of how electronic components work. It is a chance to gain credits whilst having fun finding out how things work in the world of electronics

Pathway: This course is a good step towards either industry training courses or further education courses.

### Course components

- Unit standards based on demonstrating knowledge and the practical ability to create working circuits

0	24	\$40	✓
<b>EXTERNAL CREDITS</b>	<b>INTERNAL CREDITS</b>	<b>DONATION</b>	<b>ENTRY</b>
	Maximum		Completion of ELT112 or 12 credits from SCI112 and 8 credits from Level 1 Mathematics

## L2 | GBC220

### GENERAL BUSINESS COMPUTING

This course develops the all-round computing experience from GBC110. There is a wide selection of programs studied and some more advanced features will be used, appropriate to Level 2. Word processing is used and includes typing. Spreadsheets, Desktop Publishing and Presentations are all present along with asset programs such as Photoshop and Illustrator.

Pathway: Possible Weltec and Polytech courses, office and admin employment

### Course components

- A range of unit standards address the Level 2 outcomes in each of the applications studied

0	16	\$0	✓
<b>EXTERNAL CREDITS</b>	<b>INTERNAL CREDITS</b>	<b>DONATION</b>	<b>ENTRY</b>
	Maximum		Successful completion of the GBC110 course or by negotiation

## L2 | MEG222

### MECHANICAL ENGINEERING

This course is for you if you wish to develop your knowledge and skills in a mostly metal based workshop environment. The course is delivered through engineering projects. It is particularly suitable for you if you are interested in engineering-related careers as it offers a well-balanced practically orientated course. Health and Safety in the workplace take a high priority and good attendance is expected to complete these elements of the course in particular.

Pathway: The course allows a pathway to higher level qualifications, apprenticeship or Gateway (part school, part workshop) opportunities.

### Course components

- A collection of making engineering projects from technical plans that expands your skill set and knowledge.

0	18	\$0	✓
<b>EXTERNAL CREDITS</b>	<b>INTERNAL CREDITS</b>	<b>DONATION</b>	<b>ENTRY</b>
	Maximum		Successful completion of course MEG 112 and brief interview with HoF/TiC

## L2 | HOS223

### HOSPITALITY

In this course, you will be developing the cookery and food service skills required for the hospitality industry. You will have the opportunity to enter a range of cookery competitions and further develop skills through catering for a variety of functions.

Pathway: HOS334, further training at polytechnic, an apprenticeship or work in the food service industry.

#### Course components

- Food safety in a food business
- Cook food by grilling, baking, braising and stewing

0	16	\$0	☑
EXTERNAL CREDITS	INTERNAL CREDITS Maximum	DONATION	ENTRY Open

## L2 | FTX223

### FASHION + TEXTILES

This course has a practical focus on making and developing skills in fashion design around own ideas. Making garments, fashion illustration, pattern making and trips out to visualise future pathways will inspire your creativity.

Pathway: The course leads to FTX335

#### Course components

- Develop skills in garment making
- Develop creative thinking and design skills
- Create a fashion design portfolio
- Develop awareness of fashion and design history
- Learn skills in pattern making

3	13	\$45	☑
EXTERNAL CREDITS Course endorsement offered	INTERNAL CREDITS Maximum	DONATION For practical components towards projects	ENTRY 13 credits in Fashion Level 1 OR Interview with TIC Fashion. Recommended previous sewing experience.

## L2 | SON223

### SONIC ARTS

This course gives you the opportunity to work in a range of areas, including music technology, electronic music, intermedia, audio plug-in design and electronic circuit design. In addition, you will gain a broad knowledge of ICT programs that have become standard in many industries

Pathway: Entry into the electronic (and a very valuable step into computing) industries, apprenticeships or universities to develop studies.

#### Course components

- Editing sequencing and manipulation of sound files is at the heart of the course

0	17	\$0	☑
EXTERNAL CREDITS	INTERNAL CREDITS Maximum	DONATION	ENTRY Dependent upon approval of HoF or TIC

## L2 | DVC223

### DESIGN AND VISUAL COMMUNICATION

Take your creativity to another level! If you have an interest in design and drawing, this is the course for you. You'll continue to hone your creative skills in response to challenging architecture (spatial) and product design project briefs. You'll learn to think and sketch like a designer. You'll extend your visual communication skills in areas such as design drawing, model-making, and use of design software. Excellent time management skills are required.

Pathway: The course allows for entry into Level 3 DVC. Further pathways include Architecture, Graphic Design, Product Design, Engineering etc at University; Technical courses at diploma level.

#### Course components

- Generating design ideas and communicating them through a variety of methods and media.

3	15	\$25	☑
EXTERNAL CREDITS Course endorsement offered	INTERNAL CREDITS Literacy credits (9)	DONATION	ENTRY 18 credits from DVC112



## L2 | BAR223

### BARISTA SKILLS

This course offers you the opportunity to gain a certificate in barista skills. This is a full year course and covers theory of coffee as well as practical barista skills. You will have the opportunity to learn the mechanics of an espresso machine. Apart from class time, you will have to commit to sharing barista duties over lunch times and some school events.

Pathway: Employment as a barista

#### Course components

- Use of espresso machine
- Preparation and presentation of coffee
- Machine maintenance

0	18	\$0	<input checked="" type="checkbox"/>
EXTERNAL CREDITS	INTERNAL CREDITS 10 at Level 2 and 8 at Level 3	DONATION	ENTRY Open

## L2 | FAC220

### FURNITURE AND CABINET MAKING

This course is aimed at students who enjoy, or feel they would enjoy, working in a workshop environment, producing pieces of timber furniture from working drawings. It follows a traditional apprenticeship-style approach. You will gain skills in using woodworking, hand and power tools, as well as processes and materials knowledge. This L2 course is also industry recognised.

Pathway: The course leads to a range of possible industry apprenticeship schemes

#### Course components

- The correct and safe use of hand and power tools, and the construction of furniture pieces

0	17	\$50	<input checked="" type="checkbox"/>
EXTERNAL CREDITS	INTERNAL CREDITS Maximum	DONATION	ENTRY Commitment to Health & Safety; good attendance & enthusiasm

## L2 | FTE223

### FOOD TECHNOLOGY

Develop your cooking skills and knowledge, building on FTE 112 whilst engaging in product development using your ideas, creative problem solving skills and food science.

Pathway: The course leads to FTE335.

#### Course components

- Working with stakeholders from our community to design and develop a product
- Quality control and testing in food processing.
- Social, cultural and technical considerations in food product design.
- Food science in the selection of ingredients

4	16	\$50	<input checked="" type="checkbox"/>
EXTERNAL CREDITS Literacy credits (4)	INTERNAL CREDITS Literacy credits (4)	DONATION	ENTRY Level 1 literacy and numeracy credits

## L2 | PWK234

### PRACTICAL WORKSHOP

This course is mainly practically based and the assessments reflect this. Workshop skills are gained and materials knowledge is developed, allowing you to make a range of items using a variety of materials and processes. A consistently good level of attendance is essential to allow for tutorials/ demonstrations in health and safety and machine training for the projects undertaken.

#### Course components

- We focus on safe workshop practice and the ability to work with hand and machine tools

0	16	\$50	<input checked="" type="checkbox"/>
EXTERNAL CREDITS	INTERNAL CREDITS Maximum	DONATION	ENTRY Open. Good common sense, safety consciousness, and an interest in practical workshop activity required.



## L2 | NET230

### COMPUTER NETWORKING

This course covers computer network technologies and topologies, practical hands-on networking skills and the mathematical underpinnings of computer networks.

Pathways: There are industry qualifications that this course leads on to such as CCNA, IT company apprenticeships, tertiary courses.

#### Course components

- Computer Networking construction and management

0	14	\$50	✓
EXTERNAL CREDITS	INTERNAL CREDITS Numeracy (2),	DONATION	ENTRY 6 credits from CSC223 OR currently enrolled in CSC223

## L2 | DTW223

### DESIGN & TECHNOLOGY WORKSHOP

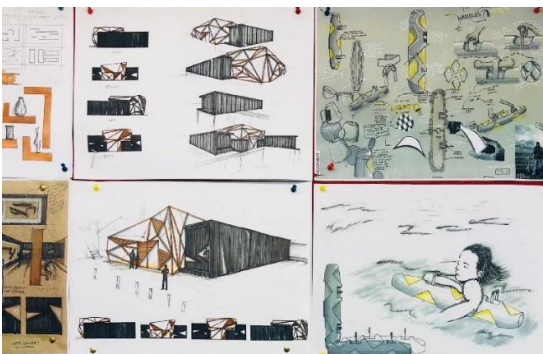
This course develops the practical focus on constructional skills and expands the range of machinery used when making objects. A wide range of hard materials knowledge is developed to further assist design and make capabilities.

Pathway: The course leads to PWK334

#### Course components

- Develop making skills in a range of materials
- Develop creative thinking and design skills
- Create a series of practical projects
- Learn how to configure and use a range of machine tools under supervision
- Develop understanding and awareness of H&S issues in a workshop environment

4	16	\$50	✓
EXTERNAL CREDITS Course endorsement offered	INTERNAL CREDITS Maximum	DONATION	ENTRY Open to all



## Level 3

## L3 | CSC335

UE/SCHOL

### COMPUTER SCIENCE

This is a course that focuses on programming and computer science concepts. It introduces you to a wide range of real world programming and data modelling skills that are transferable to industry and further tertiary studies. You will also learn about formal programming languages through practical exercises. We will also cover one advance topic such as Computer Vision or Big Data

Pathway : University or similar tertiary study

#### Course components

- Program creation and project management

3	12	\$15	✓
EXTERNAL CREDITS	INTERNAL CREDITS Maximum	DONATION	ENTRY 9 credits from CSC223 or Level 2 Maths

## L3 | DVC335

UE/SCHOL

### DESIGN & VISUAL COMMUNICATION

Take your creativity to a new level! If you have and interest in design and drawing, then this is the course for you. You'll continue to hone your creative skills in response to challenging architecture (special) and product design briefs. You'll learn to think and sketch like a designer. You'll extend your visual communication skills in areas such as design drawing, model-making and use of design software. Excellent time management skills are required.

Pathway: Architecture, graphic design, Product design Engineering etc at University; technical courses at diploma level

#### Course components

- Generating design ideas and communicating them through a variety of methods and media.

4	12	\$15	✓
EXTERNAL CREDITS	INTERNAL CREDITS Maximum	DONATION	ENTRY 15 credits from DVC223

**L3 | FTX335**

UE/SCHOL

**FASHION AND TEXTILES**

Do you love design, fashion and creating with textiles? This course is for you! Make garments and textiles to extend skills in creating and design thinking. Fashion trips included.

Pathway: University and Polytech courses. When combined with science subjects this course can lead to study and careers in Food Science, Food Technology and Food Engineering.

**Course components**

- Food preservation and processing
- Sensory science
- Food product development
- Working with community stakeholders
- Research
- Structure and function of ingredients

4	16	\$50	☑
<b>EXTERNAL CREDITS</b> Course endorsement offered. Literacy credits	<b>INTERNAL CREDITS</b> Maximum	<b>DONATION</b>	<b>ENTRY</b> Level 1 literacy and numeracy credits

**L3 | HOS334****HOSPITALITY**

This Service IQ approved course is designed to give you specific industry training which will be advantageous for a career in Hospitality. The course has a large practical component and you are expected to demonstrate independence and a level of professionalism required to be working in a commercial kitchen.

Pathway: Entry into Weltec Polytechnic, Food Service Industry or New Zealand Apprenticeship

**Course components**

- Develop knowledge of culinary terms and products.
- Production and service of preserves, bakery products, and sandwiches
- Food safety

0	18	\$50	☑
<b>EXTERNAL CREDITS</b> Maximum	<b>INTERNAL CREDITS</b> Maximum	<b>DONATION</b>	<b>ENTRY</b> Unit Standard 167 is essential

**L3 | FTE335**

UE / SCHOL

**FOOD TECHNOLOGY**

This course extends the knowledge, understanding and capabilities in technology, focusing on food product development. You will use your cooking skills and design knowledge to work on individual products with clients from our community and resolve a wide range of real opportunities, needs and problems. Scholarship Technology is also available to suitable candidates.

Pathway: University and Polytech courses. When combined with science subjects this course can lead to study and careers in Food Science, Food Technology and Food Engineering.

**Course components**

- Food preservation and processing
- Sensory science
- Food product development
- Working with community stakeholders
- Research
- Structure and function of ingredients

4	16	\$50	☑
<b>EXTERNAL CREDITS</b> Course endorsement offered. Literacy credits	<b>INTERNAL CREDITS</b> Maximum	<b>DONATION</b>	<b>ENTRY</b> Level 1 literacy and numeracy credits

**L3 | ELT334****ELECTRONICS**

This course builds on the ELT223 course. It is project based and involves a high level of practical activity, gaining more skills. Particular skills developed are programming of micro controller and use of microchips in general. At least 2 fully functioning projects will be built during the course.

Pathway: Possible Weltec and Polytech courses, possible employment/ apprenticeship opportunities.

**Course components**

- Microcontroller programming
- Microchip configuration and use
- Wider range of components in practical projects

0	16	\$40	☑
<b>EXTERNAL CREDITS</b>	<b>INTERNAL CREDITS</b> Maximum	<b>DONATION</b>	<b>ENTRY</b> Open. Good common sense, safety consciousness, and an interest in practical workshop activity required.

### L3 | PWK334

#### PRACTICAL WORKSHOP

This course builds on the PWK220 course. It is project based and involves a high level of practical activity, gaining more skills and a greater knowledge of process and materials. Work extends to use of CAD CAM machinery to produce accurate repeatable work pieces.

Pathway: Possible Weltec and Polytech courses, possible employment/ apprenticeship opportunities.

##### Course components

- A range of unit standards address the Level 3 outcomes in each of the applications studied. These are based on safe workshop practice, and the ability to work with a wider range of machine tools

0	16	\$50	☑
EXTERNAL CREDITS	INTERNAL CREDITS Maximum	DONATION	ENTRY Open. Good common sense, safety consciousness, and an interest in practical workshop activity required.

### L3 | SON334

#### SONIC ARTS

This course gives you the opportunity to work in a range of areas, including music technology, electronic music, intermedia, audio plug-in design and electronic circuit design. In addition, you will gain a broad knowledge of ICT programs that have become standard in many industries.

Pathway: Entry into the electronic (and a very valuable step into computing) industries, apprenticeships or universities to develop studies.

##### Course components

- Editing sequencing and manipulation of sound files is at the heart of the course.

0	18	\$0	☑
EXTERNAL CREDITS	INTERNAL CREDITS Maximum	DONATION	ENTRY Entry dependent upon consultation with HoF/TIC.

# TRADES & CAREERS

Head of Careers — Chuni Bhikha

Careers Advisor – Bec McKenzie

<b>L2</b>	Pathways Course Gateway / Star courses Wellington Trades Academy Training & study beyond WHS	<b>L3</b>	Trades Academy Gateway Courses Training & study beyond WHS
-----------	---	-----------	--

## L2/ L3 | PWS222 PATHWAYS COURSE

This is an individually targeted transition course for Y12 and Y13 students to help you move into meaningful employment or further education and training with a minimum of NCEA Level 2 or L3. Work experience placements are compulsory and are for 10 weeks, one day a week.

*Pathway: This course will give you the opportunity to explore career pathway ideas and may lead to entry into a trade or workplace of choice beyond WHS.*

### Course topics

- CVs, cover letters
- Career research and planning
- Interview skills
- Job search skills
- Employment law

One or more of the following:

- One Gateway work placement
- A Health and Safety programme to improve employability skills (12 credits)
- Study related to your Gateway placement where possible
- Study for your Driver's Learners License
- Short Polytech taster courses based on your interests
- Volunteer work

0	20	\$0	<input checked="" type="checkbox"/>
EXTERNAL CREDITS	INTERNAL CREDITS Plus others	DONATION	ENTRY Open

## L2 / L3 | for options see p.59 WELLINGTON TRADES ACADEMY

Want to stay at school but try something different? Trades Academy lets you enjoy both worlds. Enjoy the benefits of staying at secondary school but learn new, relevant skills for your career at the Trades Academy. WHS partners with a Vocational Pathway programme that allows you to achieve NCEA L2/L3. You'll be coached by industry professionals keen to share their expertise.

*Pathway: This course can lead to employment, apprenticeships or higher-level studies.*

### Course components

- Three days at school and two days' practical learning programme to learn new skills
- Earn credits towards your NCEA L2 or L3 and a National Certificate in your Trades Academy area
- Relevant safety gear, materials and field trips are provided
- **NOTE:** If you choose this option, you will **also do 3 or 4 subjects when at school**

0	40-45	\$0	<input checked="" type="checkbox"/>
EXTERNAL CREDITS	INTERNAL CREDITS plus school credits	DONATION Plus subsidised transport	ENTRY Open. Speak to BAC

## L2 / L3 GATEWAY / STAR COURSES

Gateway is a formal work experience programme for Year 12 /13 students. You must apply for the programme, will be interviewed and have your suitability assessed by the Gateway Coordinator. High levels of regular attendance at school are required. Placements occur in a whole range of workplaces, according to your interests and involve working one day a week for 10/11 weeks.

For more information/expression of interest form, please contact Paula Willis - [wsp@whs.school.nz](mailto:wsp@whs.school.nz) (Gateway Administrator) or Terry Hawkings - [hst@whs.school.nz](mailto:hst@whs.school.nz) (TiC Gateway and STAR)

0	20	\$0	<input checked="" type="checkbox"/>
EXTERNAL CREDITS	INTERNAL CREDITS Maximum	DONATION	ENTRY Open

# Wellington Trades Academies information for 2024

(This is subject to MOE confirmation)

On the planning sheets, choose Trades Courses on the days your course will run.

Course	Level	Campus	Days
Barbering Level 3	3	Porirua	Thursday & Friday
Cooking Café Service	2	School of Hospitality, Wellington	Thursday & Friday
Construction Mixed Trades	2	Porirua	Monday & Tuesday
Construction Mixed Trades	2	Porirua	Thursday & Friday
Cookery Level 3 – covering <i>New Zealand Certificate in Cookery L3 - 60 credits</i>	3	School of Hospitality, Wellington	Monday & Tuesday
Creative Technology	2	Te Auaha, Wellington	Thursday & Friday
Engineering and Automotive	2	Porirua	Monday & Tuesday
Engineering and Automotive	2	Porirua	Thursday & Friday
Engines	2	Porirua	Thursday & Friday
Health Science	2	Porirua	Thursday
Health Science - Anatomy & Physiology \	3/4	Porirua	Wednesday
Introductory Animal Care	3	Porirua	Monday & Tuesday
Introductory Animal Care	3	Porirua	Thursday & Friday
Salon Environment	2	Porirua	Thursday & Friday
Salon Environment	2	Te Auaha, Wellington	Thursday & Friday

# Other opportunities for study

## Studying courses with NetNZ

NetNZ is a virtual learning network in New Zealand that was set up about 25 years ago to support schools in mostly rural settings that are unable to run classes because of lack of numbers, lack of skilled teachers, etc. The NetNZ website describes NetNZ as "a not for profit organisation that specialises in enabling high quality, online education across schools and communities. We are essentially a community of secondary and area schools who work together to provide online learning opportunities for their students based on the New Zealand Curriculum."

NetNZ provides opportunities for our students beyond the courses we are able to offer. For example, language instruction is available in French, German, Korean, and Samoan at all levels of NCEA and one of our students has been studying Korean in 2023.

Some other courses offered are Accounting (levels 2 and 3) and Philosophy (levels 1, 2 and 3). In addition, there are many courses similar to our own offerings and this could be a solution if a student has a subject clash. The table below lists some of these offerings.

Course	NCEA L1	NCEA L2	NCEA L3
Accounting		✓	✓
Criminal Minds		✓	✓
Senior Philosophy	✓	✓	✓
Music and Music Technology	✓	✓	✓
Electronics and electrical engineering		✓	✓
Digital Technology	✓	✓	✓

There is more information on the [NetNZ website](#) if you are interested. See Caroline Lewis (AP) if you wish to find out more.

## Studying courses with Te Aho o Te Kura Pounamu

[Te Aho o Te Kura Pounamu](#), (formerly known as The Correspondence School) is New Zealand's largest school, providing education programmes to more than 23,000 students every year!

Students who are already enrolled with a school may also register with Te Kura if they would like to study courses that their own school doesn't offer. These students are known as '[dual students](#)'.

More information can be found on their website. Alternatively, see Caroline Lewis (AP) for more details.



# BEYOND WELLINGTON HIGH

If you are 16 years old, and ready to progress from school directly on to a career-focused pathway, Wellington High can help you make that transition. We have assisted many young people to join trades and employment courses at the following Wellington education centres:

## CAPITAL TRAINING | <http://www.capitaltraining.co.nz/>

Capital Training is a lower North Island-based, NZQA accredited, private training establishment (PTE) offering a wide spectrum of courses and qualifications to prepare you for the modern workplace. They provide a range of youth guarantee (fees free) courses in retail, business administration, computing, hospitality and construction. They have training centres in Lambton Quay, Upper Hutt, Lower Hutt, Paraparaumu, Waipukurau and Otaki, as well as providing in-work training nationwide.



## ELITE - School of Beauty and Spa | [www.elitebeautyschool.co.nz/](http://www.elitebeautyschool.co.nz/)

Make Up Artistry (L3), Beauty (L4) and Professional Face, Body and Spa Therapies (L5)



## ETCO - Electrical Training Company | <https://www.etco.co.nz/study-with-etco>

ETCO is the largest Electrical Training provider in NZ. You can either enrol for an Electrical Foundation Training programme (L3) OR apply for a job as an ETCO apprentice.



## The Learning Connexion | <https://www.tlc.ac.nz/>

A school of Creativity and Art offering a Certificate, Diploma or Advanced Diploma in Creativity (L3-6). Specialist areas include: 3D, Design, Drawing, Painting, Photography, Computer Graphics.



## Whitecliffe – School of Fashion and Sustainability | <http://www.whitecliffe.ac.nz/fashion>

NZ Fashion Tech is New Zealand's leading educator in the fashion and sewn products industries. It is an award winning fashion and garment technology college, registered and accredited with the NZ Qualifications Authority (NZQA). NZ Fashion Tech is considered to be one of the best practical technical trainers to the industry in the country. Courses include: L3 Certificate in Fashion Technology, L4 Certificate in Pattern Design and an L5 Diploma in Fashion Technology.



## NZIS – New Zealand Institute of Sports | [www.nzis.co.nz](http://www.nzis.co.nz)



## NZMA – New Zealand Management Academies Ltd | [www.nzma.ac.nz](http://www.nzma.ac.nz)

NZMA is part of New Education Group, a provider of quality education services. NZQA has ranked NZMA a category 1 provider: their highest ranking. All campuses are fully equipped with purpose-built, top-of-the-line facilities. From bars, cafes and commercial kitchens, to retail shops, live contact centre suites and construction workshops – our realistic workplace training environments will get you work-ready quicker. Courses in a wide-range of vocations are available.



## NZST School of Tourism | <https://nzschooloftourism.co.nz>

The NZST is a national NZQA approved organisation with a strong school in Wellington offering a wide range of programmes and qualifications that get students work ready. Courses range from L2 and L3 Certificate course to L4-6 Diplomas and an L7 degree course in International Tourism and Hotel Management. Specialist areas of study include: Tourism and Hospitality, Travel and Airline industry travel agents, tour guides, travel operations, flight attendants – Hotels/resorts/cruise ships, Hotel and hospitality Management, Tourism and travel management, Aviation and Tourism management.



## NZ Defence Force | <http://www.nzdf.mil.nz/>

The Defence Force is made up of three unique services, each with its own strengths.... Navy, Army, Air Force. With 109 exciting roles available, there really is something for everyone.



## PREMIER INSTITUTE OF EDUCATION / SKILLS PREMIERE (High St, Lower Hutt)



<https://pie.ac.nz/premier-institute-of-education-courses/>

Premier Institute of Education are innovative leaders in the education industry offering dynamic courses. Using our practical, hands-on methods you'll work towards nationally recognised qualifications that are approved by the New Zealand Qualifications Authority. As you study and learn, we provide pathways to work experience that often result in employment. Courses on offer include: L3 NZ Certificates in Hairdressing/Salon Support, Barbering Skills and Make up and Skin Care: L4 NZ certificates in Hairdressing Stylist, Beauty Therapy (also L5), Nail Technician.

## WELTEC and WHITIREIA have been renamed (Te Pūkenga)

but for now will still be known as Weltec and Whitireia

WELTEC | <https://weltec.ac.nz/study-programmes>

WHITIREIA | <https://www.whitireia.ac.nz/study-programmes/>

Both offer a wide range of Trades related programmes across most Trades as well as IT courses, Business, Cooking and Hospitality, Creative Technology, Salon, Hairdressing and make up, Health courses, Social and Community, Creative Arts. Their campuses are in Wellington, Petone and Porirua.



## Whitecliffe Technology / School of Information Technology

<https://www.whitecliffe.ac.nz/technology>

IT Training specialists with L5&6 qualifications in IT, Web development, Tech support, Networking and Software Development



## TE WĀNANGA O AOTEAROA | <https://www.twoa.ac.nz/Nga-Akoranga-Our-Programmes/Youth>

Established in 1984, Te Wānanga o Aotearoa provides holistic education opportunities of the highest quality for Māori, peoples of Aotearoa and the world. Te Wānanga o Aotearoa is one of New Zealand's largest tertiary education providers. They offer a comprehensive range of certificate to degree level qualifications to New Zealanders of all ages and walks of life.



## YOOBEE — School of Design | <https://www.yoobee.ac.nz>

Yoobee programmes embrace new and emerging technologies and the latest media platforms, with pathways from certificates and diplomas through to degrees with some of our partner schools. From Digital Media and Design, Web Design and UX and 3D Animation, to Filmmaking, Game Art and Development and 3D Graphics, their programmes keep you plugged in to industry advances, and on top of your game. Delivering full time, part time and online programmes, Yoobee opens doors to the best digital and design studios in the world.

