

A close-up photograph of a pink lotus flower in full bloom, set against a dark, blurred background of water and lily pads. The petals are a vibrant pink with some white variegation. The flower is the central focus of the image.

THE SOCIAL SCIENCES

Tikanga ā Iwi

WHO WE ARE

WHAT WE ARE ABOUT

Within our subject area you will find teachers with a commitment to strengthening your connection to, and understanding of, place and people.

We value the fact that people understand the world in fundamentally different ways. We explore how this affects interactions between people and their connection to the environment. Thinking in critical and sophisticated ways from a position of knowledge about past, current and future issues is at the heart of what we do.

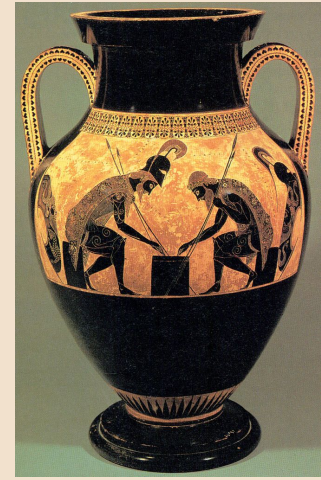
We aim to look after you as a person by providing equitable learning opportunities. Our kaupapa aligns closely with the school's WERO values and we believe that your wellbeing is enhanced by a connection with meaningful curriculum.

We are particularly interested in providing increasingly diverse ways of demonstrating your knowledge and skills.

CLASSICAL STUDIES



Classical studies helps students to engage in understanding the culture and Society of ancient Greece and Rome. It explores the influence of these cultures on the societies that followed including our modern world.



Level One

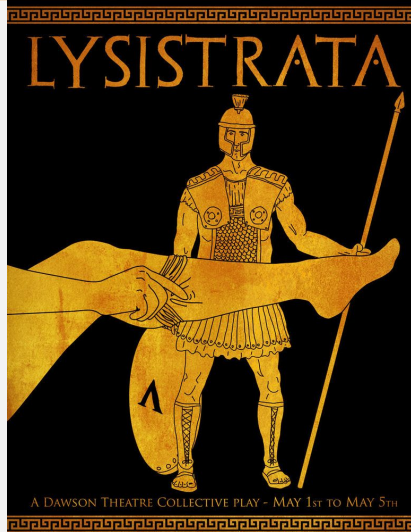
Focus on Heros

Level Two

Focus on Comedy

Level Three

Focus on ideologies and propaganda



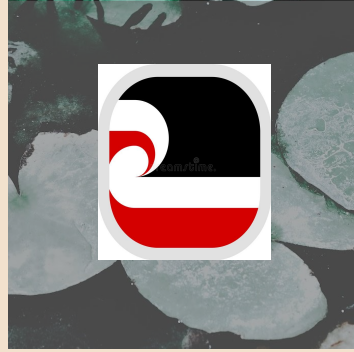
At Level 1 and 2 Classics can also gain students their English credits and literacy credits. However, students can easily take both Classics and English.

BECOME



A **risk taker** by planning and operating your own sustainable business.

UNDERSTAND



The importance of **kaitiakitanga**, **pūtake**, **tikanga** and **rangatiratanga** in business.

USE



Knowledge of human motivations and societal values to investigate how economies allocate scarce resources.

GEOGRAPHY

Geography is the study of the relationship between humans and the environment.

We investigate **local and global issues** and the significance of these for people now and in the future. **Note:** there is flexibility in this course and we aim to teach topics that you care about.

Previous topics we have covered are:

Year 11: Eco-tourism, volcanic and earthquake processes, maritime piracy, geographic research, digital mapping (GIS)

Year 12: Coastal erosion, sea level rise and climate change, patterns of refugee migration, population growth in New York City.

Year 13: Patterns of human trafficking, child poverty in Aotearoa, tourism in Rotorua, geographic research of your choice, sustainable events planning.

We also run an optional field trip every year. Location TBC for 2023.



HISTORY

Who had the power, and who challenged that power?

Why are narratives important?

What changes, what stays the same?

In History we look at global tensions, social change, and the pressures in the past that resonate today.

Year 11:

Place, Memory and History - who decides what is remembered?

History from underneath: Rights Hard won - Radical responses: Black Panthers, Polynesian Panthers, Women's Rights

Global Catastrophe: NZ Conscientious Objectors, Problems in the Middle East

Year 12:

Resistance Movements in Aotearoa New Zealand 19th & 20th C

20th C Ideological Conflicts and Independence Movements

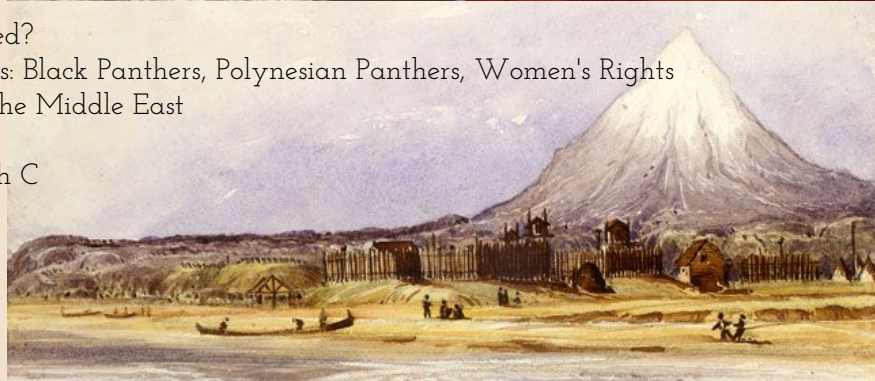
Nuclear Threats in the Pacific

Year 13:

Global expansion of Empires 18th & 19th C

Revolutions and consequences

Religious Conflict, Cultural superiority and Social Darwinism



MEDIA STUDIES

KEY QUESTIONS

We examine questions like:

1. Has social media made our lives better or worse?
2. How much should we trust the media we see?
3. Who owns the media, and what are their goals?
4. How has our media shaped our values and beliefs?

PATHWAYS

Year 10	10MDS		
Year 11	MDS112		
Year 12	MIC223	<u>and/or</u>	JRN223
Year 13	MIC335	<u>and/or</u>	JRN335 (The Flannel)

FOCUS

Moving Image Culture
Analysing Film/TV &
creating & editing short films

Journalism
Writing, designing and analysing
journal articles/news media

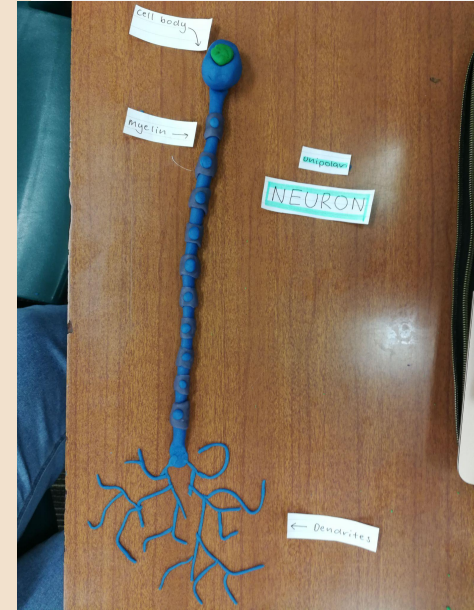


PSYCHOLOGY



Psychology helps students to understand what motivates us, what underpins our behaviours and attitudes and how that influences the way we perceive and interact with others.

We explore the nature of identity, memory, crime, addiction, relationships, intelligence and ethical issues; how culture, the media, environment and social spaces influence us.



Level Two
Focuses on identity within society

Level Three
Focuses on identity within self

SOCIOLOGY

In Sociology we consider how people's experiences, ideologies and backgrounds influence the way they view the world and interact with others.

We consider issues of inclusiveness, equity, tolerance, activism and compromise.

You will have the opportunity to explore issues of social justice which may be unfamiliar to you while also extending your understanding of issues which you already care about.



Level Two

Contexts include The Ethics around technology such as artificial intelligence and surveillance.

The rights and responsibilities around free speech

Climate justice and environmental regeneration

Level Three

Topics are guided by topical social issues.

In 2021 we looked at RSE schemes and the rural urban divide and the campaign to make te reo Māori an official language. This year we explored surveillance capitalism and trans rights.

Topics will be explored through:

- Social Inquiry
- Investigation of a campaign
- Social Action

A chance to get out of the classroom,
learn by doing and regenerate the planet!

Two courses:

- ◀ **Urban Farming** - Learn how to grow food and combat climate change at a small local urban farm
- ◀ **Restoration**- Help to restore the native wildlife of Pōneke and learn fundamental conservation skills

Both courses involve:

- ◀ half a day a week out in the community/outside
- ◀ Pathways into future jobs in sustainability
- ◀ Teamwork to plan a project and make a difference
- ◀ 20+ unit standard credits + 6+ Achievement standard credits

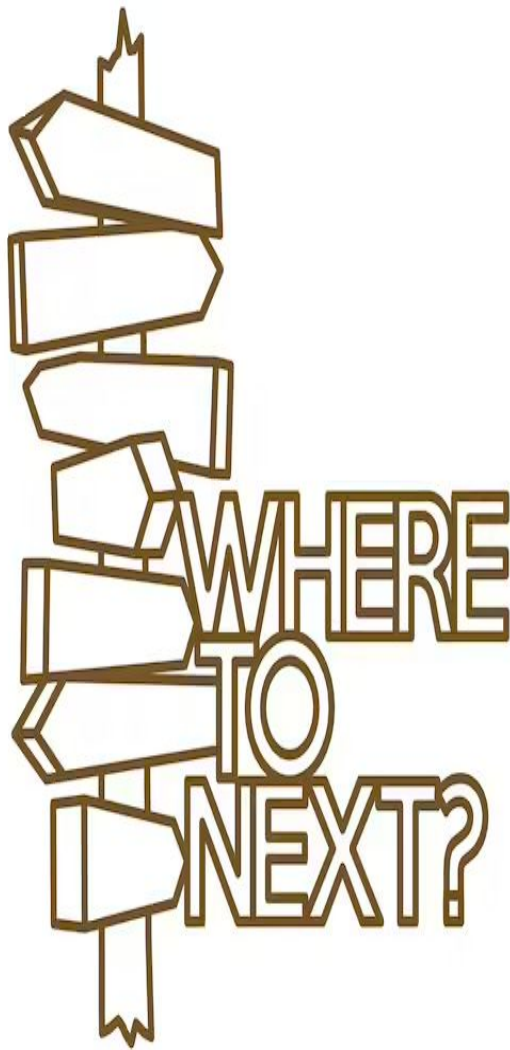


TRANSITION

In Transition, this is primarily a Vocational Studies class for L2/L3 students at the same time. The focus is on working with students who are not looking at a University pathway.

The students choose this class are generally looking for:

- entry level jobs
- Apprenticeships
- further training courses at Polytechs
- Work placements/experience



Topics include:

1. Targeted CV development
2. Cover Letter writing
3. Career Planning
4. Interview practice
5. Employment Contracts
6. Employment Problems
7. Job Search Skills
8. Looking for and applying for part time jobs
9. Work placement (1 day/wk for 10 days)
10. Health and safety in the workplace course
11. Customised/individual programme for Terms ³/₄
12. STAR course tasters - opportunities

Overview of Courses

Tikanga – ā – iwi

Year 9	*Year 9 Social Studies (9SST)*								
Year 10	Business Studies (10BUS)	Classical Studies (10CLS)	Media Studies (10MDS)		*Year 10 Social Studies (10SST)*				
Year 11	Business Studies (BUS112)	Classical Studies with English (CLE112)	Media Studies (MDS112)		Geography (GEO112)	History (HIS112)			
Year 12	Business Studies (BUS223)	Classical Studies with English (CLE223)	Moving Image Culture (MIC223)	Journalism (JRN223)	Geography (GEO223)	History (HIS223)	Psychology (PSY223)	Papa Taiao (PPT223)	Sociology (SOC223)
Year 13	Economics (ECO335)	Classical Studies (CLS335)	Moving Image Culture (MIC335)	Journalism (JRN335)	Geography (GEO335)	History (HIS335)	Psychology (PSY335)	Papa Taiao (PPT335)	Sociology (SOC335)

Compulsory subject