

Cook Strait

news

Hataitai, Kilbirnie, Lyall Bay, Miramar, Roseneath, Seatoun
Strathmore, Berhampore, Island Bay, Newtown.

23 Sep, 2013

CARS REMOVAL
GET CASH NOW!
 For any Car **\$200 to \$500**
 For any Van, Ute, Truck, 4WD
 Up to **\$5000***
DEAD OR ALIVE
 Damaged, Mechanical, De-registered, Crashed, No WOF
 No Problem "ALL WELCOME". *For selected models only.
Call Now 0800 71 72 73
 Same day service
 Satisfaction Guaranteed

CookWeather Today 10-15 Tuesday 9-15 Wednesday 9-14 Thursday 10-15 Outlook for Today
 Morning showers, then fine
 spells. Dying northerlies

CALL US ON: 587 1660



WOW Factor

By Nikki Papatsoumas
 Four year 13 fashion students from Wellington High School are hoping to WOW Wellington with their wearable art designs.
 Maia Holder-Monk, Hannah Van Seventer and Frankie Berge were all selected to take part in this year's Te Papa WOW project.
 This is held in conjunction

with the annual World of Wearable Arts Awards.
 The project, which is run in partnership with Queen Margaret's College, has been running for the last eight years.
 It gives selected students the ability to display their designs in the Te Papa shop windows.
 Fellow student Claire Rigg will have her design on display in the Met Shop window.

For the second time in the projects history all four students have also been entered into the Wellington Retailers Window Display Competition.
 Head of Fashion at Wellington High School Kylie Merrick says this is among the highest quality work she has seen produced, and has a real point of difference.
Continued on page 2.

Pictured: Hannah Van Seventer, Maia Holder-Monk, Frankie Berge and Claire Rigg.

DO KARATE THESE HOLS!

Break the holiday boredom with Karate!
ONLY \$95
 Whether you already train or trying karate for the first time, come along and have fun!
 Wed 9 Oct 11am - 2.30pm
 Thurs, Fri 10/11 Oct 10am-1.30pm
 Fun Tournament with prizes on Friday! Bookings essential.

CALL Patricia
04 383 9371
027 297 6049

Professional Auto Repairers

Kevin Diane
 Stuart Marian Sherie

Ph: 387 2105 / 4-12 Cruickshank St, Kilbirnie

AUTO CARE Kilbirnie

Virginia Haroun Licenced Under REAA 2008
Residential Sales & Marketing
 بيع و شراء العقارات

M: 021 041 0708 P: 04 387 3015
 E: vharoun@leaders.co.nz

Assyrian Arabic English **RE/MAX**

BUSINESS SPACE MADE SIMPLE

Office Suites offer an immediate start in smart, affordable, fully serviced offices within the Wellington CBD. Get on with your business and leave the day-to-day running of the office to us. Call 0275-490-745 or check out our website:

www.officesuites.co.nz

OFFICESUITES

How to reach us

CookStrait
news

Telephone (04) 587 1660

Address:

23 Broderick Rd, Johnsonville

P.O. Box 38-776, WMC 5045

Fax: (04) 587 1661



SALES:

sales@wsn.co.nz

David Lewis

email:david@wsn.co.nz



SALES:

sales@wsn.co.nz

Helen Scobie

email: helen@wsn.co.nz



REPORTER:

news@wsn.co.nz

Nikki Papatsoumas

email:nikki@wsn.co.nz



SALES:

sales@wsn.co.nz

Sam Barnes

email: sam@wsn.co.nz

Published by

Les & Katrina Whiteside

Wellington Suburban Newspapers Ltd



Delivered to Island Bay, Lyall Bay, Kilbirnie, Miramar, Seatoun, Rongotai, Newtown, Brooklyn, Mount Cook, Mt Victoria, Berhampore, Hataitai, Oriental Bay.

ABC Audit 2012: 25,456 copies weekly

Cook Strait News

The largest circulating newspaper in Wellington Southern and Eastern suburbs.

WOW Factor

Continued from page 1.

By Nikki Papatsoumas

"This year it has propelled into another whole ball game."

She says the process is very hands on and allows the students to meet with clients to discuss their work and design process.

"It's a real life opportunity to work with clients, it's not just a school project."

The girls have been working on their designs for the past six months, and began by selecting different images from Te Papa's collection of photos.

Maia's 'Winged Morphology' design was influenced by a longhorn beetle image, and she used materials including chicken wire, vinyl and make up pads to create her design, which she says reflects a "modern futuristic warrior woman."

She also used a 3D printer to create something that had the texture of chain-mail on the torso, a process which took over 70 hours.

Hannah drew inspiration from

an image of seaweed for her 'Illusion Delusion' design, and says the idea of a Rorschach ink blots soon became a focus.

"This made it quite unusual, it ended up being a nice expression for me, it was all quite natural and organic."

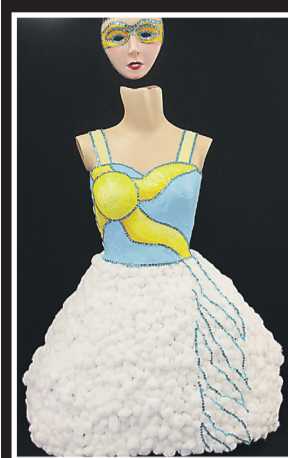
Frankie Berge's 'Sea Shanties' design looks at the sea and tales from the past. A multi-paneled skirt has been painted by hand with images of the sea.

She says she has focused on how we used to treat the ocean, and how we now treat the ocean, as well as looking at the ideas of global warming and pollution.

Claire Rigg's design 'Solar Shimmer' which is on display in the Met Shop has been influenced by the shop itself. Her design is made up of paper mache, sequins and oil painting.

"It is based on the Met Shop and their logo of the sun and the idea of the weather."

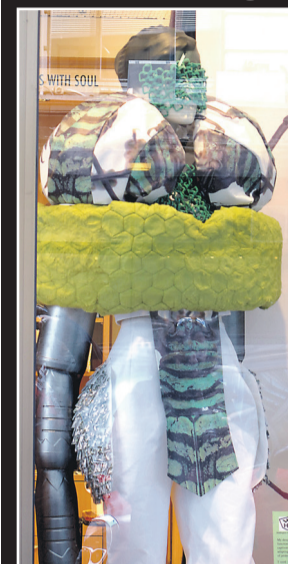
All four girls' designs will be on display until October 6.



Claire Rigg's 'Solar Shimmer' design



Frankie Berge and her 'Sea Shanties' design



Maia Holder-Monk's 'Winged Morphology' design



Te papa store manager Alexis Hawke & Hannah van Severter

Call to action for Newtown residents

By Nikki Papatsoumas

Newtown residents and business owners are invited to attend an 'earthquake safe' meeting this Thursday evening.

The meeting is being organised by the Newtown Residents Association, The Newtown Business Group and the Wellington City Council.

There will be representatives from Wellington City Council, GNS, the Wellington Regional Emergency Management Office, Wellington Zoo and local hospitals on hand to discuss issues in case of earthquake or disaster.

Newtown Business Group president David Wilcock says it is an important opportunity for Newtown residents and business owners to discuss what would happen in the event of an emergency.

"It's a really important meeting because of the recent earthquakes and what has happened in Christchurch it has brought up a lot of questions."

Mr Wilcock says these include how prepared the suburb will be and what will be available to them in an emergency.

He says this is the first informative meeting for the com-

munity and will be the vehicle to open up further meetings and workshops, and everyone is welcome to share any issues they may have.

"We want to hear everyone's issues and will then group the info and use it to direct us in the direction we need to tackle. Everyone will have an opportunity to have input."

Southern ward councillor Paul Eagle says that Newtown is "old Wellington" and they have a heritage character to protect.

"People in this part of Wellington are reflecting on what's going to happen in their wider

community, they are moving beyond their own homes and saying 'how's this going to impact where I live.'"

"That is the sort of community Newtown is, people care for others and they want to make sure they know what to do to play their part."

He encourages everyone in Newtown to come along and bring their issues to this meeting.

The meeting will be held this Thursday September 26 from 7pm to 8.30pm at St Anne's Church Hall, Emmett Street, Newtown.



HOME & GARDEN SHOW
It's all about ideas...

www.homeandgardenshow.co.nz

Wellington Home & Garden Show
WESTPAC STADIUM Wellington

27-29 SEPTEMBER 2013

Fri & Sat 10 - 6, Sun 10 - 5

Huge Variety! Massive Savings! Inspiration & Advice!

Adult \$8, Senior Special (Friday) \$5, Under 16 Free



VOTE 1
Allie Crombie

For a Nurse's voice on the Board



Capital & Coast District Health Board

Making our health system as fair as possible for all our people

Authorised by Allie Crombie, 4 Lytton Street, Wadestown, Wellington

Annette KING
MP for Rongotai



25 Kilbirnie Plaza, Kilbirnie
04 387 2587
rongotai.mp@parliament.govt.nz

Available at my office
The 'Over 60's Information Book.
Call in and collect one. It's full of helpful information.



Labour