



Wellington High School

**Te Kura Tuarua o Taraika ki
Pukeahu**

**Senior Course Choices
Years 11, 12 & 13
2019**

CONTENTS

Introduction	Need help choosing your courses?	3
	Staff and timelines	4
	Your study pathway	5
	Year 11 advice	6
	Year 12 and 13 advice	7
	NCEA Qualifications	8
	Study beyond WHS	9
	Course Overview	10-11
The Arts	Level 1	12
ART, PAINTING, PHOTOGRAPHY,	Level 2	13-15
DRAMA, DESIGN & MUSIC	Level 3	15-17
English	Level 1	18
ENGLISH	Level 2	18-20
	Level 3	20-21
Languages	Level 1	22-23
CHINESE, JAPANESE, TE REO MĀORI,	Level 2	23-24
ENGLISH LANGUAGE & SPANISH	Level 3	24-25
Mathematics	Level 1	26
ALGEBRA, STATISTICS, CALCULUS &	Level 2	26-27
NUMERACY	Level 3	27
Physical Education and Health	Level 1	28-29
OUTDOOR EDUCATION, SPORT	Level 2	29-30
SCIENCE, HEALTH & RECREATION	Level 3	31
Science	Level 1	32-33
SCIENCE, BIOLOGY, CHEMISTRY,	Level 2	33-34
PHYSICS & AG/HORT	Level 3	34-35
Social Sciences	Level 1	36-37
HISTORY, GEOGRAPHY, MEDIA,	Level 2	38-40
CLASSICS, LEGAL & SOCIAL STUDIES	Level 3	40-42
Technology	Level 1	43-45
DIGITAL TECH, DVC, ELECTRONICS,	Level 2	45-47
ENGINEERING, FOOD & FASHION	Level 3	48-49
	Multi-level courses	50
Co-curricular	WHS Incubator	51
Trades & Careers	Transition, Gateway and Trades Academy	52
	Trades courses in Wellington	53

**Need some help
selecting your
course?**

**Talk to your rōpū
teacher, Dean,
subject teacher,
Head of Faculty,
careers teacher and
your whānau.**

**Need Careers
advice? Go to
[Careers.govt](https://careers.govt.nz) and
use their useful
tools, such as
CareerQuest and
Career Checker.**

Staff and timelines

Here are the contact details for staff you may like to talk to about your course choices for 2019

Deans for 2019

Year 11	Iona Forsyth	iona.forsyth@whs.school.nz
Year 12	Trudy Harvey	trudy.harvey@whs.school.nz
Year 13	Edward Meredith	edward.meredith@whs.school.nz
International	Julie McDonald	julie.mcdonald@whs.school.nz
Careers	Chuni Bhikha	chuni.bhikha@whs.school.nz
Gateway	Terry Hawkings	terry.hawkings@whs.school.nz

Heads of Faculty for 2019

Arts	Jania Bates	iania.bates@whs.school.nz
English	Caitlin Reilly	caitlin.reilly@whs.school.nz
Languages	Sharon Henry	sharon.henry@whs.school.nz
Mathematics	Caroline Lewis	caroline.lewis@whs.school.nz
Physical Education	Randal Wakefield	randal.wakefield@whs.school.nz
Science	Nicola Dow	nicola.dow@whs.school.nz
Social Sciences	Henry Hollis	henry.hollis@whs.school.nz
Technology	Peter Jessop	peter.jessop@whs.school.nz
Learning Services	Carly Elder	carly.elder@whs.school.nz

Timeline for making your decision

Monday 3 September 2018	Future Focus Evening
Friday 14 September 2018	Preliminary course decisions made
Friday 21 September 2018	Learning Conversations
Friday 28 September 2018	Final course decisions made for 2019

Your study pathway

What level are you heading into? What are your study requirements and what programme will suit you best? **Start here:**

What year level will you be entering in 2019?		
Year 11	Year 12	Year 13
<p>You study SIX Level 1 courses</p> <p>You <u>must</u> study NCEA Level 1:</p> <ul style="list-style-type: none"> English or Classics and/or Māori Mathematics / Numeracy and any four others 	<p>You can choose FIVE or SIX courses for which you have met entry requirements</p> <p>OR you might choose a Trades pathway</p> <p>You can choose Level 2 or a combination (usually Level 1 and 2 courses).</p> <p>You are <u>strongly advised</u> to choose English or Māori.</p>	<p>You can choose FIVE or SIX courses for which you have met entry requirements</p> <p>OR you might choose a Trades pathway</p> <p>You can choose Level 3 courses or a combination of Levels 1, 2 or 3.</p> <p>If you plan to head towards a tertiary degree, you will study at Level 3</p>

How to make your choices

Choose courses that

- suit your needs, interest and abilities
- will allow you to succeed at that level - check the entry requirements.
- will support your future study.

If English is your second language, you may wish to choose an English Language course.

How the course codes work

<ul style="list-style-type: none"> • The first digit indicates the year level you are at: <ul style="list-style-type: none"> ◦ 1 = Yr 11, 2 = Yr 12 & 3 = Yr 13 • The second digit is the NCEA level the course is at: <ul style="list-style-type: none"> ◦ 1 = NCEA Level 1, 2 = NCEA Level 2, and 3 = NCEA Level 3. • The third digit indicates the NQF level the course leads to <u>next year</u> 	<p>Examples:</p> <ul style="list-style-type: none"> • NUM112: Numeracy Y11, working towards NCEA level 1 qualifications, leading to NCEA Level 2. • ENG223: English Y12, working towards NCEA level 2 qualifications, leading to NCEA Level 3 courses • APT335: Art Painting Y13, working towards NCEA level 3 qualifications, leading to university art study.
---	--

Courses will also show if they offer: Literacy, Numeracy, Course Endorsement, University Entrance requirements, and/or Scholarship.

Course donations: A number of courses available at Wellington High School have donations attached to them. These donations enrich your learning experience and allow us to provide a diverse curriculum. Your financial support of these programmes is appreciated.

YEAR 11

In Year 11, you generally study at **Level 1** on the National Qualifications Framework

To gain NCEA Level 1, you must achieve:

- **80 credits** at Level 1 or above, of which
- 10 must be Numeracy credits and 10 must be Literacy credits

Two pathways to Senior School:

1. You begin to study for NCEA Level 1. Note that some courses have entry requirements.
2. Some students may be invited to join our Arotahi programme: This offers English, Mathematics and Science, plus three other courses of choice.

Think about what you might want to choose at Level 2 in Year 12

Some Level 2 courses recommend that you have studied the subject at Level 1. So, look at Level 2 courses you might be considering and check the entry requirements as you plan your course.

Use the planning page in the centre of the booklet to help you plan your programme for next year and to look ahead to the following year.

A member of the staff will discuss your programme with you before it is finalised.

We will do our best to offer all courses in this booklet. We may not always be able to give you your first choice if there are staffing or timetable constraints.



YEAR 12 AND YEAR 13

In Year 12 and 13 you choose a programme that prepares you for your future after school.

<p>To gain NCEA Level 2, you must achieve 80 credits, of which</p> <ul style="list-style-type: none">• 60 must be at Level 2, plus• 20 from level 1 or above, plus• Level 1 Literacy and Numeracy	<p>To gain NCEA Level 3, you must achieve 80 credits, of which</p> <ul style="list-style-type: none">• 60 must be at Level 3, plus• 20 from Level 2 or above, plus• Level 1 Literacy and Numeracy
---	---

As you choose your programme:

- Note that there is a wide range to choose from at different levels. You can take any course for which you meet the entry recommendations. You may want to pick up new courses to broaden your education.
- Map your pathway through the senior courses, choosing for 2019, thinking about 2020 and 2021.
- University Entrance is more than simply achieving NCEA Level 3. Look at the rules on page 9.

Entry requirements

All Level 3 courses have strict entry requirements. You should aim at Merit in Level 2 to ensure entry to and success in Level 3 courses.

If you have not met the entry recommendations for a particular course you will need to:

- **either** be given special permission by the Head of Faculty to do the course (in some cases holiday tasks will be set)
- **or** be required to do courses which will enable you to meet the entry recommendations the following year.

A member of the senior staff will discuss your course with you before it is finalised.



NATIONAL QUALIFICATIONS & NCEA

The National Certificate in Educational Achievement (NCEA) is part of the National Qualification Framework. The aim of this framework is to give every person the chance to receive national recognition for their skills and qualifications and to provide opportunities for ongoing learning.

Y11	Level 1	National Certificate of Educational Achievement Level 1 National Certificate of Employment Skills;
Y12	Level 2	National Certificate of Educational Achievement Level 2
Y13	Level 3	National Certificate of Educational Achievement Level 3
	4	National Certificate
	5	Certificate Diploma
	6	Certificate Diploma
	7	Graduate Certificate Graduate Diploma Bachelor's Degree
	8	Postgraduate Certificate Graduate Diploma Bachelor's Honours Degree
	9	Master's Degree
	10	Doctoral Degree

NCEA is a qualification that confirms that you have achieved a broad general education. It recognises your sustained effort over a number of years, and is achieved by meeting or exceeding standards and earning credits at school.

NCEA is achieved from Achievement Standards / Unit Standards. A typical achievement standard:

.... is worth a certain number of credits (e.g. 4)				
...may be an internalor external assessment		
...and offers four grades:	Not Achieved	Achieved	Merit	Excellence

Note: Some unit standards only offer Achieved or Not Achieved grades.

Endorsements

- **Certificate endorsement:** For an NCEA certificate to be endorsed with Merit or Excellence, you must gain 50 credits at Merit or Excellence at the level of the certificate or above.
- **Course endorsement:** Course endorsement shows you have performed exceptionally well in an individual course in a single school year. A course endorsement is not a qualification. You have to achieve:
 - 14 or more credits at Merit or Excellence, and
 - at least 3 of these credits from externally assessed standards and 3 credits from internally assessed standards. Note, this does not apply to Physical Education, Religious Studies and level 3 Visual Arts.
- **NCEA Level 2** has vocational pathway endorsement. See www.youthguarantee.net.nz for information.

At High, we prepare you for NCEA as follows:

- The courses described in this booklet all lead to NCEA.
- All courses offer credits and are assessed through Achievement Standards with internal or external assessment and/or Unit Standards with internal assessment.
- Courses may have **internally assessed standards** (practical work or research assignments) and/or **externally assessed standards** (examination, project or portfolio).

All NCEA qualifications require an entry fee (in August). External exams occur in November. Read more at: <http://www.whs.school.nz/ncea-information/>

STUDY BEYOND WHS

University Entrance requirements

University Entrance (UE) is the minimum requirement to go to a New Zealand university. To qualify you will need:

- **NCEA Level 3**
- **Three approved subjects** at Level 3 - 14 credits for each. See the current list of approved subjects and standards here [\[https://www.nzqa.govt.nz/qualifications-standards/awards/university-entrance/approved-subjects/\]](https://www.nzqa.govt.nz/qualifications-standards/awards/university-entrance/approved-subjects/)
- **Literacy** - 10 credits at Level 2 or above [\[https://www.nzqa.govt.nz/qualifications-standards/awards/university-entrance/literacy-requirements/\]](https://www.nzqa.govt.nz/qualifications-standards/awards/university-entrance/literacy-requirements/), made up of:
 - 5 credits in reading
 - 5 credits in writing
- **Numeracy** - 10 credits at Level 1 or above [\[https://www.nzqa.govt.nz/ncea/subjects/literacy-and-numeracy/level-1-requirements/lit-num-subjects/\]](https://www.nzqa.govt.nz/ncea/subjects/literacy-and-numeracy/level-1-requirements/lit-num-subjects/), made up of:
 - achievement standards – specified achievement standards available through a range of subjects, or
 - unit standards - package of three numeracy unit standards (26623, 26626, 26627- all three required).

The courses that include UE approved standards, literacy and numeracy are noted throughout this book in the UE column.

Ad Eundem Statum - Students who have attended school overseas and have an acceptable equivalent to the University Entrance requirements apply for Ad Eundem.

Special Admission - New Zealand students who are 20 years or older may apply for Special Admission. Application forms are available from the Admissions Office or the Liaison Office at the university.

University Guaranteed Entry Score (GES)

University Entrance will entitle you to entry to university but it may not immediately get you into the course you wish to study.

In addition to the university entrance requirement, **some universities work on a GES (Guaranteed Entry Score) for different degrees.**

There is more information in relation to Guaranteed Entry Scores on the school website with links to university admission pages. Go to www.whs.school.nz/ncea-information

Entry to Polytechnic

Polytechnics have close links with industry so their qualifications are relevant to the modern workplace. Tutors often come from the very industries for which you are training, so that you are equipped with the most relevant and up-to-date skills for your career.

Entry to polytechnics varies for each course and you must find the information from the polytechnic or careers information at school. If you are interested, see Careers Advisor, Chuni Bhikha, in the Careers Office on M Block Level 4 (M410)

COURSES OVERVIEW

Art Faculty

ART, PAINTING, PHOTOGRAPHY, DRAMA, DESIGN & MUSIC — see pages 12—17

Y10	Drama Music Visual Art	L1	Art Drama Music	L2	Design Drama Music Painting Photography Printmaking Sculpture Theatre Studies	L3	Contemporary Art Practice Design Drama Music Painting Photography Sculpture Theatre Studies
-----	------------------------------	----	-----------------------	----	--	----	---

English Faculty

ENGLISH LITERATURE — see pages 18—21

Y10	English	L1	English Classics**	L2	English English with Science Fiction English for Writers English with Religion Painted Word* Classics**	L3	English English for Writers English and Philosophy Painted Word*
-----	---------	----	-----------------------	----	--	----	---

*This is a combined course with Arts | ** See Social Sciences for Classics information

Languages Faculty

CHINESE, JAPANESE, TE REO MĀORI & SPANISH — see pages 22—25

Y10	Chinese Japanese Spanish Te Reo Māori	L1	Chinese English Lang. Japanese Spanish Te Reo Māori	L2	Chinese English Lang. Japanese Māori Performing Arts Spanish Te Reo Māori	L3	Chinese English Lang. Japanese Spanish Te Reo Māori
-----	--	----	---	----	---	----	---

Mathematics Faculty

ALGEBRA, STATISTICS, CALCULUS & NUMERACY — see pages 27—29

Y10	Mathematics	L1	Mathematics Numeracy	L2	Mathematics Numeracy Finance	L3	Calculus Mathematics Statistics
-----	-------------	----	-------------------------	----	------------------------------------	----	---------------------------------------

Physical Education & Health Faculty

OUTDOOR EDUCATION, SPORT SCIENCE, HEALTH & RECREATION — see pages 28—31

Y10	Health Education Physical Education Sport Science	L1	Health Education Outdoor Education Sport Science Recreation	L2	Health Education Outdoor Education Sport Science Recreation	L3	Health Education Outdoor Education Sport Science Recreation
-----	---	----	--	----	--	----	--

Science Faculty

SCIENCE, BIOLOGY, CHEMISTRY, PHYSICS & AG/HORT — see pages 32—36

Y10	Science	L1	Horticulture Science Science for English Lang. Learners	L2	Agriculture / Horticulture Biology Chemistry Earth & Space Science Physics	L3	Agriculture / Horticulture Biology Chemistry Earth & Space Science Physics
-----	---------	----	--	----	--	----	--

Social Sciences Faculty

HISTORY, GEOGRAPHY, MEDIA, CLASSICS, LEGAL & SOCIAL STUDIES — see pages 37—43

Y10	Business Studies Classical Studies Media Studies Social Studies	L1	Business Studies Classical Studies with English Faith & Force Geography History Media Studies Media in Aotearoa NZ	L2	Business Studies Classical Studies with English Geography History Journalism History Media in Aotearoa Moving Image Culture Papa Taiao Psychology	L3	Classical Studies Economics Geography History Journalism Legal Studies Moving Image Culture Papa Taiao Sociology
-----	---	----	---	----	--	----	--

Technology Faculty

DIGITAL TECH, DESIGN, ELECTRONICS, ENGINEERING, FOOD & FASHION — pages 43—50

Y10	Computer Science Digital Media Design Tech Workshop DVC Fashion and Product Food Tech.	L1	Computer Science Crest* Design Visual Comms. Digital Media Electronics* Fashion and Product Food Technology Furniture & Cabinet Making General Business Computing Hospitality Mechanical Engineering	L2	Barista Skills Computer Science Crest* Design Visual Comms. Digital Media Electronics* Fashion and Product Food Technology Furniture & Cabinet Making General Business Computing Hospitality Mechanical Engineering Practical Workshop Sonic Arts*	L3	Computer Science Crest* Design Visual Comms. Digital Media Electronics* Fashion and Product Food Technology Hospitality Practical Workshop Sonic Arts*
-----	--	----	---	----	--	----	---

*These are multi-level courses

Cross-Curricular

WHS Incubator — see page 51

L1	WHS Incubator	L2	WHS Incubator
----	---------------	----	---------------

Trades & Careers

TRADES ACADEMY, EMPLOYMENT SKILLS & ENVIRONMENTAL STUDIES — see pages 52—53

L2	Transition Course Trades Academy Gateway Courses Training & study beyond WHS	L3	Trades Academy Gateway Courses Training & study beyond WHS
----	---	----	--

Subject Overview

L1	Art Drama Music	L2	Design Drama Music Painting Photography Printmaking Sculpture Theatre Studies	L3	Contemporary Art Practice Design Drama Music Painting Photography Sculpture Theatre Studies
----	-----------------------	----	--	----	--

*This is a combined course with English — see English section for information

L1 | DRA122

DRAMA – 2 YEAR COURSE

Are you a self-motivated, driven actor? In this course, you are offered the chance to plot your own path in this co-constructed two-year programme.

Pathway: DRA335 and the public stage

Course components

- Explore, create and perform
- Level 2 credit opportunities in Year 11
- Level 3 credits assessed in Year 12
- Group work and attendance essential

4	18	\$60	<input checked="" type="checkbox"/>
EXTERNAL CREDITS At Level 2; Course endorsement offered	INTERNAL CREDITS At Level 2	DONATION For theatre trips	ENTRY Year 10 Drama or by audition as required

L1 | DRA112

DRAMA

This course introduces you to acting in front of an audience for the first time. You learn skills needed for acting and making your own drama, while developing your performance confidence.

Pathway: This course prepares you for DRA223.

Course components

- Learn drama techniques
- Perform in a production
- Research and explore ideas to create your own devised drama
- Group work and attendance are essential

0	18	\$60	<input checked="" type="checkbox"/>
EXTERNAL CREDITS	INTERNAL CREDITS Max. Literacy credits offered	DONATION For theatre visits	ENTRY Year 10 Drama or by audition as required

L1 | ART112

ART

If you are interested in art and would like to refine your skills in art making processes this is the course for you.

Pathway: This course prepares you for PHO223, APT223, ASC223, APR223 or DES223.

Course components

- Develop skills in art making techniques using wet and dry media.
- Explore art making processes of drawing, painting and printmaking
- Resolve ideas by producing your own original artwork for a portfolio

12	10	\$30	<input checked="" type="checkbox"/>
EXTERNAL CREDITS Course endorsement offered	INTERNAL CREDITS Maximum	DONATION For an Art Pack.	ENTRY Open

L1 | MUS112

MUSIC

This course builds on skills you have learnt in Year 10 on your chosen instrument, composing your own original songs and instrumental pieces and learning music theory and history.

Pathway: This course prepares you for MUS223

Course components

- Prepare for Music Evening performances
- Perform as a soloist
- Write original compositions
- Explore a range of musical scores and genres

4	16	\$0	<input checked="" type="checkbox"/>
EXTERNAL CREDITS Course endorsement offered	INTERNAL CREDITS Literacy credits offered	DONATION Free itinerant instrument or vocal lessons	ENTRY Year 10 Music or by audition as required

Level 2

L2 | DES223

DESIGN

In this course, you develop and present ideas visually through drawing and digital manipulation to communicate ideas using image and text.

Pathway: This course prepares you for DES335, PHO335, APT335, ASC335, or ART335.

Course components

- Explore techniques by hand and in Photoshop
- Develop an understanding of the design process and working to a brief
- Create a portfolio of work based on skills you have learnt

12	8	\$40	<input checked="" type="checkbox"/>
EXTERNAL CREDITS	INTERNAL CREDITS	DONATION	ENTRY
Course endorsement offered		Sketchbook	Recommended previous experience in Level 1 Art

L2 | APR223

PRINTMAKING

In this course, you will develop skills using a range of printmaking techniques. You will apply these skills to produce a portfolio of work.

Pathway: This course prepares you for DES335, PHO335, APT335, ASC335, or ART335.

Course components

- Develop skills in traditional and contemporary drawing practice
- Develop skills in a range of printmaking processes
- Study contemporary artists
- Create a portfolio of work based on skills you have learnt

12	8	\$30	<input checked="" type="checkbox"/>
EXTERNAL CREDITS	INTERNAL CREDITS	DONATION	ENTRY
Course endorsement offered	Maximum	Art Pack.	Recommended previous experience in Level 1 Art

L2 | ASC223

SCULPTURE

In this course, you become familiar with a range of sculptural practices that include installation, time-based and object based art. You learn how to work in a systematic way to develop your ideas to make a body of work for a portfolio.

Pathway: prepares you for DES335, PHO335, APT335, or ART335.

Course components

- Begin to understand the technical and communicative conventions of sculpture making
- Develop a series of related works
- Focus on developing a portfolio of work

12	4	\$50	<input checked="" type="checkbox"/>
EXTERNAL CREDITS	INTERNAL CREDITS	DONATION	ENTRY
Course endorsement offered	Maximum	FA4 Sketchbook	Recommended previous experience in Level 1 Art

L2 | APT223

PAINTING

In this course, you will develop your skills needed in painting. You explore a range of painting techniques and develop your ideas based on your own choice of subject matter.

Pathway: APT335, PHO335, ASC335, DES335 or ART335.

Course components

- Become aware of the different approaches to how paintings can be created
- Develop skills in a related series of works
- Create your own portfolio of paintings

12	8	\$30	<input checked="" type="checkbox"/>
EXTERNAL CREDITS	INTERNAL CREDITS	DONATION	ENTRY
Course endorsement offered		Fee contribution	Recommended previous experience in Level 1 Art

L2 | DRA223

UE

DRAMA

This course extends and further develops your acting skills and theatre knowledge. You explore a range of different theatre forms and perform in a substantial production.

Pathway: This course prepares you for DRA335.

Course components

- Use drama techniques in a scripted context
- Devise and perform a drama
- Rehearse and perform in a production
- Examine techniques and theatre technologies
- Group work and attendance are essential.

4	14	\$60	<input checked="" type="checkbox"/>
EXTERNAL CREDITS	INTERNAL CREDITS	DONATION	ENTRY
Course endorsement offered	Literacy credits offered	For theatre visits	Completed Level 1 Drama, or by audition as required

L2 | PHO223

PHOTOGRAPHY

This course is a practical course covering camera handling, composition and digital and physical manipulation of photographs using Photoshop. You use these skills to create your own body of work for a portfolio.

Pathway: PHO335, APT335, APT335, ASC335, DES335 or ART335.

Course components

- Develop skills in Photography conventions.
- Learn about contemporary art practice in Photography
- Create your own portfolio of work

Digital camera required.

12	8	\$40	<input checked="" type="checkbox"/>
EXTERNAL CREDITS	INTERNAL CREDITS	DONATION	ENTRY
Course endorsement offered	Maximum	Fee contribution	Recommended previous experience in Level 1 Art

L2 | MUS223

MUSIC

This course builds on skills learned in Year 11. You write songs and instrumental pieces individually or in groups with a focus on performing.

Pathway: This course prepares you for MUS335.

Course components

- Prepare for performances in groups for Music Evening
- Perform as a soloist
- Write original compositions
- Compare and contrast substantial music works

Students must be able to play an instrument and have basic music reading skills.

6	19	\$0	<input checked="" type="checkbox"/>
EXTERNAL CREDITS	INTERNAL CREDITS	DONATION	ENTRY
Course endorsement offered	Maximum	Free itinerant instrument or vocal lessons	Interview and audition as required.

Sculpture



Honey Brown Y13



Asha Barr Y12



Max Brydan Y12



Zen Zenzobi Y12



Eloise Daysh Y13



Raine Saul-Yarrow Y13



Mahalia Tobin Y13

Design



Charlotte Poi Y13

Jean Donaldson Y13



Lauren O'Hara Y13



Grover Thang Y13



William Robinson Y13

L2 & L3: | THS223/THS335

THEATRE STUDIES

The purpose of this course is to offer you leadership and extension opportunities within the discipline of Performing Arts and to broaden your experience through directing and producing theatre work. You have a hands-on approach to directing and script writing, supported by investigation of theatre form and history in a practical context.

Pathway: This course prepares you for University, Toi Whakaari, teacher training, performing arts training, and any field of interest that requires confidence and communication skills.

Course components

- Directing
- Scriptwriting
- Study of other theatre forms
- Theatre methodology and style
- Analyse scripted work for a production
- Written work is required to achieve all standards

Entry: Year 12 entry requires completion of Level 1 Drama, English or Media Studies. Year 13 entry requires completion of Level 2 Drama, English or Media Studies.

18	4	\$60	<input checked="" type="checkbox"/>
EXTERNAL CREDITS Course endorsement offered	INTERNAL CREDITS Literacy credits offered	DONATION For theatre visits	ENTRY Level 1, Level 2 Drama

Level 3

L3 | PHO335

UE / SCHOL

PHOTOGRAPHY

This course extends your photography skills in new and innovative ways. You develop ideas based on a theme of your choice.

Pathway: This course can lead to university, art school, and jobs in creative industries

Course components

- Develop and refine skills in creative problem solving through photography
- Learn how to reflect and respond to art and your own art work
- Focus on developing a portfolio of work.

Digital camera required.

14	8	\$50	<input checked="" type="checkbox"/>
EXTERNAL CREDITS Course endorsement offered	INTERNAL CREDITS Maximum	DONATION Fee contribution	ENTRY Level 2 Art 12 credits or proven ability, interview upon enrolment

L3 | DES335

UE / SCHOL

DESIGN

This course further develops your understanding of the design process from Level 2. You combine creative thinking with digital technology to communicate ideas through image and text.

Pathway: This course prepares you for university or other higher study.

Course components

- Design as problem-solving
- Establishing a client's requirements
- Writing and working to a brief
- Use a variety of art and design practices, and be prepared to work digitally to bring ideas to fruition for a folio

14	8	\$40	<input checked="" type="checkbox"/>
EXTERNAL CREDITS Course endorsement offered	INTERNAL CREDITS Maximum	DONATION Fee contribution	ENTRY Level 2 Art 12 credits or proven ability, interview upon enrolment



L3 | APT335

UE / SCHOL

PAINTING

This a practical course that teaches you the skills of reflecting on the drawing and painting process. You will develop a body of work based around a theme of your choice.

Pathway: This course prepares you for university, art school, and jobs in creative industries.

Course components

- Develop and extend your skills and understanding of historic and contemporary painting practice
- Learn how to reflect and respond to art and your own art work
- Focus on developing a portfolio of work.

14	8	\$40	<input checked="" type="checkbox"/>
EXTERNAL CREDITS Maximum	INTERNAL CREDITS Maximum	DONATION Fee contribution	ENTRY Level 2 Art 12 credits or proven ability, interview upon enrolment

L3 | ASC335

UE / SCHOL

SCULPTURE

Further develop your sculpture making skills around a theme of your choice.

Pathway: prepares you for Tertiary, art school and creative industries such as Weta workshop.

Course components

- Develop skills in creative problem solving in 3-dimensional form
- Investigate New Zealand and international contemporary sculpture
- Learn how to reflect and respond to art and your own art work
- Learn how to produce a systematic body of work for a folio

14	4	\$50	<input checked="" type="checkbox"/>
EXTERNAL CREDITS Course endorsement offered	INTERNAL CREDITS Literacy credits offered	DONATION Fee contribution	ENTRY Level 2 Art 12 credits or proven ability, interview upon enrolment

L3 | MUS335

UE / SCHOL

MUSIC

This course builds on the skills learned in year 12 with options available in performance, written works and research into music history.

Pathway: This course prepares you for university study or music school.

Course components

- Research a music topic
- Develop knowledge of music theory and history
- Demonstrate ensemble skills for Music Evening
- Perform as a soloist
- Write original compositions or songs

Students must be able to play an instrument and have music reading skills.

4	32	\$0	<input checked="" type="checkbox"/>
EXTERNAL CREDITS Course endorsement offered	INTERNAL CREDITS Literacy credits offered	DONATION Free itinerant instrument or vocal lessons	ENTRY Interview and audition as required.

L3 | DRA335

UE / SCHOL

DRAMA

This course builds on skills learnt in Level 2 and has a strong focus on performance. There are three public performance opportunities: production, scripted and devised.

Pathway: This course prepares you for University, Toi Whakaari, teacher training, performing arts training, and any field of interest that requires confidence and communication skills.

Course components

- Create an original drama
- Rehearse and perform in a major production
- Demonstrate understanding of a live theatre performance
- Interpret drama techniques
- A scripted performance
- Group work and attendance are essential

4	14	\$60	<input checked="" type="checkbox"/>
EXTERNAL CREDITS Course endorsement offered	INTERNAL CREDITS Literacy credits offered	DONATION For theatre visits	ENTRY 14 Level 2 credits in Drama, or by audition as required

CONTEMPORARY ART PRACTICE

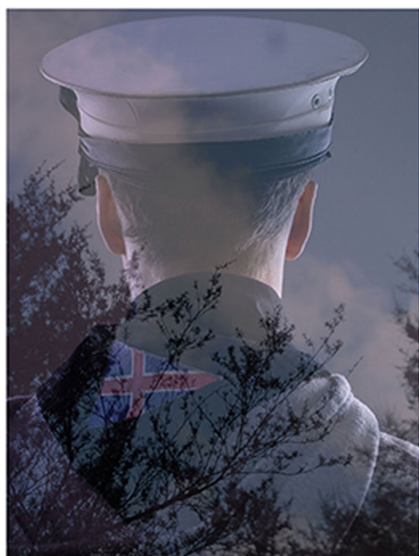
In this course, you are challenged to work in an interdisciplinary way in the Arts. The singular disciplines of traditional painting, design, or photography will be integrated into a body of work over the year. It will be your ideas driving the decision on what media, techniques and disciplines you choose to work in. This is what contemporary art practice looks like. If you have a determination and passion for the arts this could be the course for you.

Pathway: This course can lead to university, art school, and jobs in creative industries.

Course components

- Investigate and become familiar with New Zealand and international contemporary art practice of some significance
- Learn how to reflect and respond to art and your own art work
- Focus on developing a portfolio of work using two or more art disciplines

14	8	\$50	<input checked="" type="checkbox"/>
EXTERNAL CREDITS Course endorsement offered	INTERNAL CREDITS Literacy credits offered	DONATION Fee contribution	ENTRY Level 2 Art 12 credits or proven ability, interview upon enrolment



Declan Walding Y13



Jake Barnett Y13

Subject Overview

L1	English Classical Studies with English*	L2	English English with Science Fiction English for Writers English with Religion Painted Word** Classical Studies with English*	L3	English English for Writers English and Philosophy Painted Word**
----	--	----	--	----	--

**This is a combined course with Arts | * See Social Sciences for Classics information

Level 1

L1 | ENG112

ENGLISH

We are surrounded by many different messages in this modern world and it is important to understand how we are all affected by what we read, see and hear. In this course, you will study a range of texts including articles, novels, short stories, poems, lyrics and films. You will also develop your confidence and skills in writing, reading, discussing and presenting.

Pathway: This course can lead to Level 2 English courses (ENG223, ENW223, ENS223, ENR223)

Course components

- Engagement with a wide range of texts
- A personal reading program in which you respond to texts of your choosing, making links to the wider world
- A range of opportunities to write for different purposes and audiences

Students are expected to bring a laptop to class.

12	13	\$ TBA	<input checked="" type="checkbox"/>
EXTERNAL CREDITS Maximum	INTERNAL CREDITS Literacy credits	DONATION Trips and outings as appropriate	ENTRY Open

Level 2

L2 | ENS223

ENGLISH WITH SCIENCE FICTION

If you are a fan of science fiction books and films, and you are curious about the relationship between humans and technology, then this is the course for you.

Pathway: This course can lead to any level 3 English course.

Course components

- Developing an understanding of genre conventions, especially within science fiction
- Improving reading comprehension with increasingly complex texts
- Presenting information in a variety of ways
- Developing an understanding of increasingly complex ideas

Entry without the recommended entry credits will be negotiated on an individual basis.

8	14	\$ TBA	<input checked="" type="checkbox"/>
EXTERNAL CREDITS Maximum	INTERNAL CREDITS Literacy credits	DONATION Nil	ENTRY Credits in Level 1 English Ach. Stds.

L2 | ENW223

UE

ENGLISH FOR WRITERS

If you really enjoy writing and would like the opportunity to develop your skills as an author, this is the course for you. The focus will be on what makes great writing and you will read texts and think about how they could inspire your own work.

Pathway: This course can lead to any level 3 English course.

Course components

- Using other authors' work as a model for your own writing
- The chance to workshop and develop your writing
- Opportunities to deepen your study of written literature

Entry without the entry recommendations will be negotiated on an individual basis.

8	13	\$ TBA	<input checked="" type="checkbox"/>
EXTERNAL CREDITS Maximum	INTERNAL CREDITS Literacy credits	DONATION Trips and outings as appropriate	ENTRY 12 credits in Level 1 English or Classics.

L2 | ENG223

UE

ENGLISH

As your understanding of texts becomes more sophisticated, you will learn how genre conventions are used to create style and meaning. You will also learn about the conventions found in a range of different texts, and you will research and present your findings on an aspect of genre or an issue arising from your reading and viewing.

Pathway: This course can lead to any level 3 English course.

Course components

- Developing an understanding of genre conventions
- Developing further skills in writing, with an emphasis on reading, film and presenting
- Opportunities to learn and demonstrate information literacy skills

You are expected to bring a laptop to class. Entry without the entry recommendations will be negotiated on an individual basis

12	13	\$ TBA	<input checked="" type="checkbox"/>
EXTERNAL CREDITS Maximum	INTERNAL CREDITS Literacy credits	DONATION Trips and outings as appropriate	ENTRY 12 achievement standard credits in Level 1 English

L2 | ENR223

UE

ENGLISH WITH RELIGION

This is a new course for 2019. You will study world religions and their influence and representation in the realm of literature. You will look at religions through a philosophical lens, and use texts dealing with religion as a context for applying key English skills.

Pathway: This course can lead to any Level 3 English course

Course components

- You will gain an overview of a range of world religions, and improve your overall 'religious literacy'
- You will explore issues and themes across these religions, with an emphasis on contemporary issues and events
- Opportunities will be provided for you to focus in more depth on one religion, looking at a range of literary texts with links to this religion
- Religious Studies standards will be offered alongside English standards

You are expected to bring a laptop to class. Entry without the entry recommendations will be negotiated on an individual basis.

12	20	\$ TBA	<input checked="" type="checkbox"/>
EXTERNAL CREDITS Maximum	INTERNAL CREDITS Literacy credits	DONATION Trips and outings as appropriate	ENTRY 12 achievement standard credits in Level 1 English



L2 | PWD223 PAINTED WORD

UE

If you love art, and you are interested in how artists and writers respond to and reflect the world they lived in, this is the course for you. You will look at significant moments in 19th century art and learn about famous art movements such as Impressionism. You will also study how New Zealanders have depicted themselves and each other in their art, architecture, films and literature.

Pathway: Any Level 3 English course

Course components

- You will have ample opportunity to visit galleries and learn from curators, artists and writers
- Where possible, work will be assessed against both Art History and English standards
- Credits offered will be decided in collaboration with your teacher

8	18	\$ TBA	✓
EXTERNAL CREDITS Maximum	INTERNAL CREDITS Literacy credits. Assessments to be negotiated.	DONATION Trips and outings as appropriate. Bring a laptop to class.	ENTRY 14 credits from Level 1 English and an interest in art. Entry without will be negotiated on an individual basis

ENGLISH | Level 3

L3 | ENG335 ENGLISH

UE

In Year 13 English, you will take your study of literature to the next level. You will learn about various literary theories, such as Freudian theory and feminist literary theory, and apply them to texts to gain new meanings.

Pathway: Tertiary courses or employment.

Course components

- The continued study of written and visual texts
- An in-depth study in which you will learn how to apply literary theories to texts
- Opportunities to further develop and demonstrate writing skills

Entry without the entry recommendations will be negotiated on an individual basis.

8	13	\$ TBA	✓
EXTERNAL CREDITS Maximum	INTERNAL CREDITS Literacy credits	DONATION Trips and outings as appropriate	ENTRY 12 credits from a Level 2 English course



L3 | ENW335 ENGLISH FOR WRITERS

UE

If you really enjoy writing and would like the opportunity to develop your skills as an author, this is the course for you. The focus will be on what makes great writing and you will read texts and think about how they could inspire your own work.

Pathway: Tertiary courses or employment.

Course components

- Using other authors' work as a model for your own writing
- The chance to workshop and develop your writing
- Opportunities to deepen your study of written literature

Entry without the entry recommendations will be negotiated on an individual basis.

8	13	\$ TBA	✓
EXTERNAL CREDITS Maximum	INTERNAL CREDITS Literacy credits	DONATION Trips and outings as appropriate	ENTRY 12 credits from a L2 English course

L3 | ENP335



ENGLISH WITH PHILOSOPHY

In English with Philosophy you will gain an overview of the history of philosophy and apply philosophical concepts to literature, with an emphasis on rich discussions.

Pathway: Tertiary course or employment.

Course components

- An emphasis on the use of logic and reason
- There is a strong focus on discussions in this course
- The study of philosophical ideas in books and films
- Opportunities to further develop and demonstrate writing skills

Note: This course no longer offers Religious Studies credits

12	13	\$ TBA	<input checked="" type="checkbox"/>
EXTERNAL CREDITS Maximum	INTERNAL CREDITS Literacy credits	DONATION Trips and outings as appropriate	ENTRY 12 credits from a L2 English course

L3 | PWD335



PAINTED WORD

If you love art and are interested in how artists think, create and critically communicate ideas in their work, this course is for you. This course helps develop an appreciation and understanding of art through the ages with a particular emphasis on Modern American and New Zealand art. You will study extraordinary periods of rapid and exciting change.

Pathway: Tertiary courses or employment.

Course components

- The English aspects will involve writing around Art History themes and investigating the connections between visual and written art
- Where possible, work will be assessed against both Art History and English standards.
- Credits offered will be decided in collaboration with your teacher

12	22	\$ TBA	<input checked="" type="checkbox"/>
EXTERNAL CREDITS Assessments to be negotiated.	INTERNAL CREDITS Literacy credits. Assessments to be negotiated.	DONATION Trips and outings as appropriate. Bring a laptop to class.	ENTRY 14 credits from a L2 English course (including U.E. Literacy) and an interest in art.

LANGUAGES | NGĀ REO

Head of Faculty — Sharon Henry

Subject Overview

L1	Chinese English Language Japanese Spanish Te Reo Māori	L2	Chinese English Language Japanese Māori Performing Arts Spanish Te Reo Māori	L3	Chinese English Language Japanese Spanish Te Reo Māori
----	--	----	---	----	--

L1 | CHI112

CHINESE

This course focuses on language that are useful for students to communicate in everyday situations in Chinese, such as daily routines, weekends, school life, travel and shopping.

Pathways: This course can lead to Level 2 Chinese.

Course components

- Demonstrate understanding of a variety of spoken and written Chinese texts
- Give a spoken presentation in Chinese
- Interact using spoken Chinese
- Write a variety of text types in Chinese

10	14	\$20	<input checked="" type="checkbox"/>
EXTERNAL CREDITS	INTERNAL CREDITS	DONATION	ENTRY
Course endorsement offered	Maximum	For optional hardcopy workbooks	Year 10 Chinese including passing at least one spoken and one written assessment

L1 | MAO112

TE REO MĀORI

This course will extend your use of te reo by looking at topics related to teenage life.

Pathway: This course can lead to Level 2 Te Reo Māori.

Course components

- Demonstrate understanding of a variety of spoken and written Te Reo Māori texts
- Create a portfolio of spoken Te Reo Māori
- Write a variety of text types in Te Reo Māori

12	12	\$0	<input checked="" type="checkbox"/>
EXTERNAL CREDITS	INTERNAL CREDITS	DONATION	ENTRY
Course endorsement offered	Literacy credits	Nil	Year 10 Te Reo Māori incl. passing at least one spoken and one written assessment or by prior arrangement with the teacher

L1 | JAP112

JAPANESE

This course focuses on language that is useful for you to communicate in everyday situations in Japan. It also includes a murder mystery!

Pathway: This course can lead to Level 2 Japanese.

Course components

- Demonstrate understanding of a variety of spoken and written Japanese texts
- Interact using spoken Japanese
- Write a variety of text types in Japanese

10	10	\$20	<input checked="" type="checkbox"/>
EXTERNAL CREDITS	INTERNAL CREDITS	DONATION	ENTRY
Course endorsement offered	Maximum	For optional hardcopy workbooks	Year 10 Japanese, including passing at least one spoken and one written assessment

L1 | ENL111

ENGLISH LANGUAGE

This course focuses on learning how to communicate clearly. You will learn to read simple texts and to write accurate sentences and increase your knowledge of vocabulary.

Pathway: This course can lead to Level 2 English Language.

Course components

- Demonstrate understanding of a variety of written English texts
- Give a spoken presentation in English
- Write a variety of text types in English

0	15	\$0	<input checked="" type="checkbox"/>
EXTERNAL CREDITS	INTERNAL CREDITS	DONATION	ENTRY
	Maximum	Nil	Open

L1 | SPA112

SPANISH

This course focuses on language that is useful for you to communicate in everyday situations in Spanish speaking countries. It also includes a Treasure Hunt, and Latin American and Spanish cooking and music.

Pathway: This course can lead to Level 2 Spanish.

Course components

- Demonstrate understanding of a variety of spoken and written Spanish texts
- Give a spoken presentation in Spanish
- Interact using spoken Spanish
- Write a variety of text types in Spanish

10	14	\$20	<input checked="" type="checkbox"/>
EXTERNAL CREDITS	INTERNAL CREDITS	DONATION	ENTRY
Course endorsement offered	Maximum	For optional hardcopy workbooks	Year 10 Spanish incl. passing at least one spoken and one written assessment or by prior arrangement with the teacher.

L2 | SPA223

SPANISH

This course focuses on furthering communication skills so that you can justify your ideas on topics such as Tourism, School and Teen Issues. Latin American and Spanish cooking and music are also part of this course.

Pathway: This course can lead to Level 3 Spanish.

Course components

- Demonstrate understanding of a variety of spoken and written Spanish texts
- Give a spoken presentation in Spanish
- Interact using spoken Spanish
- Write a variety of text types in Spanish

10	14	\$20	<input checked="" type="checkbox"/>
EXTERNAL CREDITS	INTERNAL CREDITS	DONATION	ENTRY
Course endorsement offered	Maximum	For optional hardcopy workbooks	14 credits in Level 1 Spanish or by prior arrangement with the teacher

Level 2

L2 | ENL222

ENGLISH LANGUAGE

This course focuses on developing the skills needed to write with grammatical accuracy and good paragraph organisation; reading and listening to spoken information. You will work towards level 2 English Language unit standards and Level 1 literacy requirements.

Pathway: This course can lead to Level 3 English Language.

Course components

- Demonstrate understanding of simple spoken interactions in English
- Read and understand simple English texts on familiar topics.
- Write simple texts in English on familiar topics

0	21	\$0	<input checked="" type="checkbox"/>
EXTERNAL CREDITS	INTERNAL CREDITS	DONATION	ENTRY
	Literacy credits	Nil	Ability to converse in English

L2 | MPA220

MĀORI PERFORMING ARTS

This course is for you if you want to do Kapa Haka. The course will cover a range of waiata, haka and mōteatea. You can still participate in Kapa Haka if you don't take this course.

Pathway: This course can lead to further credits in Māori Performing Arts at a higher level.

Course components

- Waiata-ā- ringa
- Poi
- Waiata tira and Mōteatea
- Haka and Mau rākau

0	24	\$0	<input checked="" type="checkbox"/>
EXTERNAL CREDITS	INTERNAL CREDITS	DONATION	ENTRY
	Maximum	Nil	Open



L2 | CHI223

CHINESE

This course focuses on furthering communication skills so that you can justify your ideas on topics such as lifestyles, the best places for holidays, health issues, and planning a birthday party.

Pathway: This course can lead to Level 3 Chinese.

Course components

- Demonstrate understanding of a variety of spoken and written Chinese texts
- Give a spoken presentation in Chinese
- Interact using spoken Chinese
- Write a variety of text types in Chinese

10	14	\$20	<input checked="" type="checkbox"/>
EXTERNAL CREDITS	INTERNAL CREDITS	DONATION	ENTRY
Course endorsement offered	Maximum	For optional hardcopy workbooks	14 credits in Level 1 Chinese

L2 | MAO223

TE REO MĀORI

In this course, you use te reo to look at your aspirations and dreams. You will begin to form and present your own ideas in te reo.

Pathway: This course can lead to Level 3 Te Reo Māori.

Course components

- Demonstrate understanding of a variety of spoken and written Te Reo Māori texts
- Create a portfolio of spoken Te Reo Māori
- Write a variety of text types in Te Reo Māori

12	12	\$0	<input checked="" type="checkbox"/>
EXTERNAL CREDITS	INTERNAL CREDITS	DONATION	ENTRY
Maximum	Literacy credits	Nil	14 credits in Level 1 Māori

L2 | JAP223

JAPANESE

This course focuses on furthering communication skills so that you can justify your ideas on topics such as Cooking, Japanese Monsters (Yokai), School and Teen Issues.

Pathway: This course can lead to Level 3 Japanese.

Course components

- Demonstrate understanding of a variety of spoken and written Japanese texts
- Give a spoken presentation in Japanese
- Interact using spoken Japanese
- Write a variety of text types in Japanese

10	14	\$20	<input checked="" type="checkbox"/>
EXTERNAL CREDITS	INTERNAL CREDITS	DONATION	ENTRY
Course endorsement offered	Maximum	For optional hardcopy workbooks	14 credits in Level 1 Japanese

Level 3



L3 | JAP335

JAPANESE

UE / SCHOL

This course develops language skills that allows you to argue different points of view. Each year we decide together on the topics that will be studied.

Pathway: This course can lead to Stage 2 Japanese at university.

Course components

- Demonstrate understanding of a variety of spoken and written Japanese texts
- Give a spoken presentation in Japanese
- Interact using spoken Japanese
- Write a variety of text types in Japanese

10	14	\$20	<input checked="" type="checkbox"/>
EXTERNAL CREDITS	INTERNAL CREDITS	DONATION	ENTRY
Course endorsement offered	Maximum	For optional hardcopy workbooks	14 credits in Level 2 Japanese



L3 | ENL323

ENGLISH LANGUAGE

This course focuses on developing skills needed to write formal essays; to read and understand academic texts; and to listen and understand spoken information. It will work towards level 3 English Language unit standards.

Pathway: This course can be studied in conjunction with UE Literacy or English.

Course components

- Demonstrate understanding of spoken information in English on familiar topics.
- Read and understand texts in English on familiar topics
- Develop personal responses to independently read English texts supported by evidence
- Write a variety of text types in English on familiar topics

0	23	\$0	<input checked="" type="checkbox"/>
EXTERNAL CREDITS	INTERNAL CREDITS	DONATION	ENTRY
Maximum	Maximum	Nil	Intermediate level of English

L3 | CHI335

CHINESE

This course develops language skills that allows you to argue different points of view on topics such as teen issues, school systems, food, travel and homestay.

Pathway: This course can lead to Stage 2 Chinese at university.

Course components

- Demonstrate understanding of a variety of spoken and written Chinese texts
- Give a spoken presentation in Chinese
- Interact using spoken Chinese
- Write a variety of text types in Chinese

10	14	\$20	<input checked="" type="checkbox"/>
EXTERNAL CREDITS	INTERNAL CREDITS	DONATION	ENTRY
Course endorsement offered	Maximum	For optional hardcopy workbooks	14 credits in Level 2 Chinese

L3 | SPA335

SPANISH

This course develops language skills that allow you to argue different points of view. Topics include topical issues such as Immigration and gender. Students can choose topics of study that interest them.

Pathway: This course can lead to Stage 2 Spanish at university.

Course components

- Demonstrate understanding of a variety of spoken and written Spanish texts
- Give a spoken presentation in Spanish
- Interact using spoken Spanish
- Write a variety of text types in Spanish

10	14	\$20	<input checked="" type="checkbox"/>
EXTERNAL CREDITS	INTERNAL CREDITS	DONATION	ENTRY
Maximum	Maximum	For optional hardcopy workbooks	14 credits in SPA223 or by prior arrangement with the teacher

L3 | MAI335

TE REO MĀORI IMMERSION

This course is designed to extend the level of fluent te reo Māori speakers by studying in a language immersion environment. Topics will be based on student interest.

Pathway: This course can lead to Stage 1 and 2 Te Reo Māori at university.

Course components

- Demonstrate understanding of a variety of spoken and written Te Reo Māori texts
- Create a portfolio of spoken Te Reo Māori
- Write a variety of text types in Te Reo Māori

12	16	\$0	<input checked="" type="checkbox"/>
EXTERNAL CREDITS	INTERNAL CREDITS	DONATION	ENTRY
Course endorsement offered	Literacy credits	Nil	Level 2 Māori or fluency in te reo and interview with HoF

MATHEMATICS | PĀNGARAU

Head of Faculty — Caroline Lewis

Subject Overview

L1	Mathematics Numeracy	L2	Mathematics Numeracy Finance	L3	Mathematics Calculus Statistics
----	-------------------------	----	------------------------------------	----	---------------------------------------

L1/2 | MAT123

MATHEMATICS

This is for year 11 and 12 students and offers a choice of standards in whichever areas of the curriculum you are interested in or need for your future career path. You can choose a mixture of Level 1 and 2 standards and choose whether you do internal or external standards or both

Pathway: This course can lead to Calculus or Statistics or Mathematics in Year 13 (depending on the standards you choose).

Course components

- Algebra
- Geometry and measurement
- Probability
- Statistics

Note: 10 Numeracy credits are required for UE

12	TBC	\$7	<input checked="" type="checkbox"/>
EXTERNAL CREDITS Course endorsement offered	INTERNAL CREDITS Numeracy credits & Literacy	DONATION Per workbook, calculator, laptop	ENTRY Year 10 Mathematics recommendation

L1 | NUM112

NUMERACY

This course enables you to work on basic skills in number, measurement and statistics in order to achieve Numeracy through 3 unit standards. It is assessed by a portfolio of work.

Pathway: This course can lead to Finance (FIN222).

Course components

- Number
- Statistics
- Measurement

Note: 10 Numeracy credits are required for UE

N/A	10	\$0	<input checked="" type="checkbox"/>
EXTERNAL CREDITS	INTERNAL CREDITS Numeracy credits	DONATION You will need a scientific calculator	ENTRY Year 10 Mathematics recommendation

L2 | NUM212

NUMERACY

This course enables Year 12 or 13 students who have not already gained 10 Numeracy credits to work on basic skills in number, measurement and statistics in order to achieve Numeracy through 3 unit standards. It is assessed by a portfolio of work.

Pathway: This course can lead to Finance (FIN222).

Course components

- Number
- Statistics
- Measurement

Note: 10 Numeracy credits are required for UE

N/A	10	\$0	<input checked="" type="checkbox"/>
EXTERNAL CREDITS	INTERNAL CREDITS Numeracy credits	DONATION You will need a scientific calculator	ENTRY Students who have not yet gained 10 Numeracy credits



L2 | FIN222

FINANCE

This course focuses on managing money in everyday life. You will learn how to make informed decisions about spending and saving money and how to adapt to changing financial situations.

Pathway: This course can lead to possible Level 3 Finance course (not in 2019).

Course components

- Personal income and budgeting
- Taxation
- Banking
- Insurance

0	16	\$14	<input checked="" type="checkbox"/>
EXTERNAL CREDITS	INTERNAL CREDITS	DONATION	ENTRY
	Maximum	For workbooks	Level 1 Numeracy

L3 | MAC335

CALCULUS

This course is centred on the further development of calculus and its applications. It should be a first choice for you if you are hoping to do further study in mathematics, physical sciences, engineering (including computing), graphics and economics.

Pathway: This course can lead to tertiary study in mathematics or associated courses.

Course components

- Differentiation
- Integration
- Algebra
- Trigonometry

17	7	\$36	<input checked="" type="checkbox"/>
EXTERNAL CREDITS	INTERNAL CREDITS	DONATION	ENTRY
Course endorsement offered	Numeracy credits	For workbooks; you also need a graphical calculator (Casio fx-9750GII or equivalent)	15 credits from MAA223 including 91262 (2.7) and merit in 91261 (2.6)

Level 3

L3 | MAT335

MATHEMATICS

If you want to carry on with maths with a mixture of algebra, statistics and discrete mathematics.

Pathway: This course can lead to tertiary study in associated courses.

Course components

- Algebra
- Statistics
- Probability
- Critical path analysis

8	12	\$32	<input checked="" type="checkbox"/>
EXTERNAL CREDITS	INTERNAL CREDITS	DONATION	ENTRY
Course endorsement offered	Numeracy & some Literacy credits	For workbooks. You also need a graphical calculator (Casio fx-9750GII or equivalent) and a laptop (essential).	14 credits from MAA223 or 14 credits from MAS223 including AS 91267 (external)

L3 | MAS335

STATISTICS

This course is centred on the further development of statistics and probability. It should be the first choice for you if you are hoping to do further study in mathematics or statistics, biological and social sciences, commerce and administration.

Pathway: This course can lead to tertiary study in statistics or associated courses.

Course components

- Time series
- Bivariate data
- Inference
- Probability

8	12	\$26	<input checked="" type="checkbox"/>
EXTERNAL CREDITS	INTERNAL CREDITS	DONATION	ENTRY
Course endorsement offered	Numeracy & Literacy credits	For workbooks; you also need a graphical calculator (Casio fx-9750GII or equivalent) and a laptop (essential).	14 credits from MAA223 or 14 credits from MAS223 including AS 91267 (external).

PHYSICAL EDUCATION & HEALTH | HAUORA

Head of Faculty — Randal Wakefield

Subject Overview

L1	Outdoor Education Sport Science Recreation Health Education	L2	Outdoor Education Sport Science Recreation Health Education	L3	Outdoor Education Sport Science Recreation Health Education
----	--	----	--	----	--

Level 1

L1 | HED112

HEALTH EDUCATION

Health is a NCEA course based around life, love, loss, and the struggles you have along the way. You will develop resilience and positive skills to help you become a confident, assertive and reassured individual.

Pathway: This course can lead to HED223.

Course components

- Take action to enhance an aspect of personal wellbeing
- Interpersonal skills used to improve relationships
- Understand strategies for promoting positive sexuality
- Health-enhancing decisions in drug-related situations

4	12	\$0	<input checked="" type="checkbox"/>
EXTERNAL CREDITS	INTERNAL CREDITS	DONATION	ENTRY
Course endorsement offered	Literacy credits	Nil	Satisfactory completion of Year 10 Physical Education and a pass result in the PE and Health examination.

L1 | REC112

RECREATION

This course is aimed at students who enjoy the practical side of Physical Education. You will learn how to reflect on your personal involvement in sport and leisure activities and identify factors that influence your enjoyment. You will be assessed in a team and individual sport context and run a Sports Education model with a focus on interpersonal skills.

Pathway: This course can lead to REC223.

Course components

- Participate actively in a variety of physical activities and explain factors that influence own participation
- Quality movement in the performance of a physical activity
- Demonstrate interpersonal skills and use on-going reflection to explain the effects on the functioning of a group
- Demonstrate strategies to improve the performance of a physical activity and describe the outcomes

0	15	\$0	<input checked="" type="checkbox"/>
EXTERNAL CREDITS	INTERNAL CREDITS	DONATION	ENTRY
Course endorsement offered	Maximum	Nil	Open



L1 | SPS112 SPORT SCIENCE

This course aims to extend your knowledge and understanding of physical education. You will be involved in developing performance improvement programs, studying functional anatomy in practical sporting contexts and demonstrating interpersonal skills in a sports education environment.

Pathway: This course can lead to SPS223.

Course components

- Understand the function of the body as it relates to the performance of physical activity
- Quality movement in the performance of a physical activity
- Societal influences on physical activity and the implications for self and others
- Strategies to improve the performance of physical activity

0	15	\$0	<input checked="" type="checkbox"/>
EXTERNAL CREDITS Course endorsement offered	INTERNAL CREDITS Maximum	DONATION Nil	ENTRY Satisfactory completion of Year 10 Physical Education and a pass result in the PE and Health examination.

L1 | ODE112 OUTDOOR EDUCATION

The key areas of activity will focus on a range of summer and winter based activities such as kayaking, power kiting, scuba diving, sailing, surfing, stand up paddle boarding, archery, orienteering and tramping. Assessments will be based on both theory and practical aspects of the course.

Pathway: This course can lead to ODE223.

Course components

- Participate actively in a variety of physical activities
- Quality movement in the performance of a physical activity
- Responsible behaviour for safety during outdoor education activities
- Take purposeful action to assist others to participate in physical activity

0	20	\$590	<input checked="" type="checkbox"/>
EXTERNAL CREDITS Course endorsement offered	INTERNAL CREDITS Maximum	DONATION \$150 Course fees and \$440 Ski trip	ENTRY Satisfactory completion of Year 10 Physical Education and a pass result in the PE and Health examination.

Level 2

L2 | HED223 HEALTH EDUCATION

You will examine adolescent issues and the possible short and long-term consequence on your well-being. You will also develop, implement and evaluate a plan to enhance hauora of students in our school or in our community.

Pathway: This course can lead to HED335.

Course components

- Evaluate factors that influence people's ability to manage change
- Take action to enhance an aspect of people's well-being
- Analyse an interpersonal issue(s) that places personal safety at risk
- Analyse issues related to sexuality and gender to develop strategies for addressing the issues

4	15	\$0	<input checked="" type="checkbox"/>
EXTERNAL CREDITS Course endorsement offered	INTERNAL CREDITS Literacy credits	DONATION Nil	ENTRY 15 credits in Level 1 Health Education

L2 | REC223 RECREATION

An interest and commitment to playing sports and developing skills is essential. You will develop advanced physical skills in a number of different contexts, including team, individual and outdoor pursuit activities. You will complete a 3 day camp at a high ropes course with a focus on self-management and social responsibility.

Pathway: This course can lead to REC334.

Course components

- Perform a physical activity in an applied setting
- Consistently demonstrate social responsibility
- Participation in adventure based learning

0	16	\$150	<input checked="" type="checkbox"/>
EXTERNAL CREDITS	INTERNAL CREDITS Maximum	DONATION For High Ropes camp	ENTRY Open

L2 | ODE223

OUTDOOR EDUCATION

You will develop skills and experience a range of adventure activities such as kayaking, sailing, surfing, power kiting, scuba diving, archery and surf lifesaving. It will also enable you to learn about environmental and sustainability practices, movie making and trip planning. This course includes a summer trip down the Whanganui River and an optional trip to Samoa.

Pathway: This course can lead to ODE335.

Course components

- Analyse the application of risk management strategies to a challenging outdoor activity
- Consistently demonstrate social responsibility through application of a social responsibility model in physical activity
- Examine the implementation and outcomes of a physical activity event or opportunity
- Perform a physical activity in an applied setting

0	19	\$150+	<input checked="" type="checkbox"/>
EXTERNAL CREDITS	INTERNAL CREDITS	DONATION	ENTRY
Course endorsement offered	Literacy credits	Course resources \$150. Tramp \$100. Optional trip to Samoa approx. \$2200	15 Credits Level 1 Outdoor Education



L2 | SPS223

SPORT SCIENCE

You will take a detailed look at biophysical principles using video analysis and learn how these apply to your own performance improvement. It includes learning a range of physical activities, fitness and training programmes and a look at the significance for self and society of a sporting event.

Pathway: This course can lead to SPS335.

Course components

- Demonstrate understanding of how and why biophysical principles relate to the learning of physical skills and a strength training program
- Perform a physical activity in an applied setting
- Examine the significance for self, others and society of a sporting event, a physical activity, or a festival

0	16	\$0	<input checked="" type="checkbox"/>
EXTERNAL CREDITS	INTERNAL CREDITS	DONATION	ENTRY
Course endorsement offered	Maximum	Nil	Passed Achievement Standard 90963



Level 3

L3 | HED335



HEALTH EDUCATION

You will explore a range of attitudes, values and different practices that support/ undermine health and well-being. Topics include health practices, New Zealand and International health issues and the debate surrounding ethical issues. You are posed with issues that face youth of today and are given the chance to make recommendations for change.

Pathway: This course can lead to university entrance, careers pathway in the health industry.

Course components

- Analyse a New Zealand health issue
- Evaluate health practices currently used in New Zealand
- Analyse a contemporary ethical issue in relation to well-being
- Analyse a New Zealand health issue

5	14	\$0	<input checked="" type="checkbox"/>
EXTERNAL CREDITS	INTERNAL CREDITS	DONATION	ENTRY
Course endorsement offered	Literacy credits	Nil	Open

L3 | ODE335



OUTDOOR EDUCATION

This course aims to develop skills in a wide range of adventure activities as well as trip planning, environmental and sustainability practices, event and safety management.

Pathway: This course is a university approved course and can lead to a career in adventure tourism industry.

Course components

- Evaluate physical activity experiences to devise strategies for lifelong well-being
- Demonstrate quality performance of a physical activity in an applied setting
- Examine a current physical activity event, trend or issue and its impact on New Zealand society. Analyse issues in safety management for outdoor activity to devise safety management strategies

0	20	\$550	<input checked="" type="checkbox"/>
EXTERNAL CREDITS	INTERNAL CREDITS	DONATION	ENTRY
Course endorsement offered	Literacy credits	\$150 course fee and \$400 Whanganui river trip	15 Credits Level 2 Outdoor Education

L3 | REC334

RECREATION

You will develop advanced physical skills in a number of different contexts, including team sports, adventure based learning and mountain biking. You will learn how to plan coaching sessions and investigate sports injuries, completing a first aid accredited course.

Course components

- Demonstrate quality performance of a physical activity in an applied setting
- Demonstrate leadership while participating in adventure based learning activities
- Mountain biking, Makara peak, Aro Valley & Mount Victoria
- Manage first aid in emergency situations.

0	16	\$0	<input checked="" type="checkbox"/>
EXTERNAL CREDITS	INTERNAL CREDITS	DONATION	ENTRY
	Maximum	Nil	Open

L3 | SPS335



SPORT SCIENCE

You will plan, implement and evaluate a skill improvement program, incorporating biophysical principles, skill learning theories and sports psychology. You will challenge assumptions around performance improvement theories and examine the role money plays in New Zealand sport.

Pathway: This course is university approved and leads to careers in the sports and leisure industry.

Course components

- Analyse a physical skill performed by self or others using biomechanical knowledge
- Evaluate the effectiveness of a performance programme
- Demonstrate quality performance of a physical activity in an applied setting
- Examine a current physical activity, event, trend or issue and its impact on New Zealand society

0	16	\$0	<input checked="" type="checkbox"/>
EXTERNAL CREDITS	INTERNAL CREDITS	DONATION	ENTRY
Course endorsement offered	Literacy credits	Nil	15 credits in Level 2 Sport Science

SCIENCE | PUTAIAO

Head of Faculty — Nicola Dow

Subject Overview

L1	Science Science for English Lang. Learners Horticulture	L2	Biology Chemistry Physics Agriculture / Horticulture Earth & Space Science	L3	Biology Chemistry Physics Agriculture / Horticulture Earth & Space Science
----	--	----	--	----	--

L1 | SCI112

SCIENCE

Practical and theoretical study of selected topics from the three main branches of science. This course allows you to build on your previous learning in science and attain formal recognition of your learning.

Pathway: This course can lead to understanding the world around us and scientific issues affecting our society. It is preparation for specialist study of the sciences in the senior school, which lead to scientific careers.

Course components

- Acids and Bases (Chemistry)
- Mechanics (Physics)
- Genetic Variation (Biology)
- Either Heat, Microbes, Physics investigation, Carbon Cycle or Chemical Reactions

12	8	\$22	<input checked="" type="checkbox"/>
EXTERNAL CREDITS Maximum	INTERNAL CREDITS Maximum	DONATION For a write-in handbook	ENTRY Open

L1 | SCE112

SCIENCE FOR ENGLISH LANGUAGE LEARNERS

With a strong focus on hands-on practical work, writing paragraph answers and annotating diagrams, this course allows students of all levels to develop their ability to learn Science in English.

Pathway: Mainstream science courses at Wellington High.

Course components

- Carry out a physics investigation and analyse data
- Carry out a microbiology investigation and consider implications
- Design and carry out a chemistry investigation
- Carry out an earth science investigation and consider implications

0	16	\$0	<input checked="" type="checkbox"/>
EXTERNAL CREDITS Nil	INTERNAL CREDITS Maximum	DONATION Nil	ENTRY Open



L1 | AGH112

AGRICULTURE AND HORTICULTURE

This course enables students to develop a working knowledge and basic practical skills in plant propagation, training and management. It is for students interested in any aspect of horticulture including: landscape design, gardening and turf culture.

Pathway: This course can lead to AGH223 and then either university courses OR Polytechnic courses leading to a multitude of apprenticeship opportunities in the various horticulture sectors

Course components

- Basic plant propagation knowledge and skills
- Plant investigations
- Soil management
- Landscape design to meet user needs

4	15	\$0	<input checked="" type="checkbox"/>
EXTERNAL CREDITS Maximum	INTERNAL CREDITS Literacy and numeracy	DONATION Nil	ENTRY Open to anyone with a genuine interest in the environment/ and working outside using safe practices.

L2 | CHE223

CHEMISTRY

Chemistry is the study of substances and their interaction with each other and with energy. In this course, you can gain an understanding of the particles involved in each aspect to explain the material world around you.

Pathway: This course can lead to Year 13 Chemistry. It can also help you to make informed decisions, separating reasonable expectations from pure fiction.

Course components

- Qualitative and quantitative analysis (practical assessments)
- Inorganic chemical reactions
- Structure, bonding and energy
- Organic reactions

13	7	\$23	<input checked="" type="checkbox"/>
EXTERNAL CREDITS Maximum	INTERNAL CREDITS Maximum	DONATION For workbook	ENTRY 12 Level 1 Science credits incl. acids and bases, or chemical reactions

Level 2

L2 | PHY223

PHYSICS

You will study physics, taking in both conceptual and mathematical approaches. You will be expected to complete formal reports on experimental work and to bring computers to lessons.

Pathway: This course can lead to Physics at level 3 and/or tertiary study of physics.

Course components

- Radioactivity
- Mechanics
- Electricity and Electromagnetism
- Waves and Optics

Note: Maths standards AS 91027 (Algebra) and AS 91032 (right angled triangles) are entry recommendations as well as the Science standards listed below.

16	7	\$35	<input checked="" type="checkbox"/>
EXTERNAL CREDITS Maximum	INTERNAL CREDITS Maximum	DONATION For a write-in handbook	ENTRY 12 L1 Science credits incl. Heat or Mechanics.

L2 | ESS223

EARTH AND SPACE SCIENCE

You will learn about how stars shine, how the planets formed, what causes earthquakes and volcanoes and have chance to choose projects that match your abilities and interests.

Pathway: This course can lead to ESS334 and then either university courses OR Polytechnic courses leading to a multitude of apprenticeship opportunities in the various primary industry sectors.

Course components

- Extreme Earth events (volcanoes, earthquakes etc.)
- Stars and Planets
- Local rocks and landforms
- Personal project work

8	12	\$60	<input checked="" type="checkbox"/>
EXTERNAL CREDITS Maximum	INTERNAL CREDITS Maximum	DONATION Workbook and field trip	ENTRY Level 1 science 4 credits minimum and Level 1 literacy

L2 | BIO223

BIOLOGY

Biology is the natural science that studies life and living organisms. Students will learn how cells interact with their environment and each other.

Pathway: This course can lead to level 3 Biology.

Course components

- Life processes at the cellular level
- Genetic variation and change
- Ecological Communities
- Gene Expression

12	8	\$40	<input checked="" type="checkbox"/>
EXTERNAL CREDITS Maximum	INTERNAL CREDITS Maximum	DONATION for workbook and field trips	ENTRY Level 1 Science credits including Genetic Variation AS 90948

L2 | AGH223

AGRICULTURE AND HORTICULTURE

This course enables students to develop a working knowledge and practical skills in plant propagation, training and management. It is for students interested in any aspect of one or more of the primary industry horticulture sectors.

Pathway: This course can lead to AGH334 and then either university courses OR Polytechnic courses leading to a multitude of apprenticeship opportunities in the various primary industry sectors.

Course components

- Commercial plant propagation skills and knowledge
- Plant management techniques.
- Techniques used to modify the environment for plant production

4	15	\$0	<input checked="" type="checkbox"/>
EXTERNAL CREDITS Maximum	INTERNAL CREDITS Maximum	DONATION Nil	ENTRY Level 1 science 12 credits minimum and Level 1 literacy and numeracy

Level 3

L3 | CHE335

UE / SCHOL

CHEMISTRY

This course builds on the understanding obtained from CHE223.

Pathway: This course can lead tertiary study where it is a prerequisite or part of the many science related courses of study especially in the medical or health sector and engineering.

Course components

- Structure, bonding, energy and entropy
- Inorganic chemical reactions involving redox and aqueous equilibria
- Organic reactions including polymers
- Spectroscopy

15	6	\$23	<input checked="" type="checkbox"/>
EXTERNAL CREDITS Maximum	INTERNAL CREDITS Maximum	DONATION For workbook	ENTRY 14 Credits from L2 Chemistry

L3 | PHY335

UE / SCHOL

PHYSICS

You will study physics, taking in both conceptual and mathematical approaches. You will be expected to complete formal reports on experimental work and to bring computers to lessons.

Pathway: This course can lead to university study of physics, especially as part of a Science, Engineering or Medicine degree.

Course components

- Modern Physics
- Mechanics
- Electricity and Electromagnetism
- Waves

Note: Studying Maths with Calculus MAC335 recommended.

16	7	\$30	<input checked="" type="checkbox"/>
EXTERNAL CREDITS Maximum	INTERNAL CREDITS Maximum	DONATION For a write-in handbook	ENTRY 14 Level 2 Science credits

L3 | BIO335

UE / SCHOL

BIOLOGY

Biology is the science of life. It covers the relationships between organisms and the environment. You will explore the evolutionary processes that have resulted the diversity of life, the way humans have manipulated genetic information and developed informed opinions relating to the implications of these manipulations. Biology helps you to communicate scientifically and better understand the world around you.

Pathway: This can lead to tertiary study as part of a Science, Technology, Bio-Engineering or Medical qualifications.

Course components

- Socioscientific: Investigating controversial biological issues & their implications
- Homeostasis: Human survival in extreme conditions
- Biotechnology: Cloning & Selective breeding
- Ecology: Animal Behaviour and Plant Responses in the Living World.
- Evolution: the Speciation of Plants and Animals

9	9	\$50	<input checked="" type="checkbox"/>
EXTERNAL CREDITS Maximum	INTERNAL CREDITS Maximum	DONATION for workbook and field trips	ENTRY 12 credits L2 Science

L3 | AGH334

UE / SCHOL

AGRICULTURE AND HORTICULTURE

This course focuses on NZ primary production with an emphasis on carrying out plant management practices to meet export market requirements and grower profitability. Complementary subjects are: mathematics, biology, business studies and economics.

Pathway: This course can lead to tertiary courses in; agriculture, horticulture, commerce, soil science, forestry, environmental science, landscape architecture to name a few.

Course components

- Sensory survey on apple fruit attributes
- Research the profitability of growing grapes for export wines
- Studying the production processes of a primary product (apples) to meet specific export market requirements
- Analysing a NZ primary production environmental issue

9	10	\$0	<input checked="" type="checkbox"/>
EXTERNAL CREDITS Maximum	INTERNAL CREDITS Maximum	DONATION Nil	ENTRY Entry: 12 credits minimum from any level 2 science or economics and Level 2 literacy and numeracy

L3 | ESS335

UE / SCHOL

EARTH AND SPACE SCIENCE

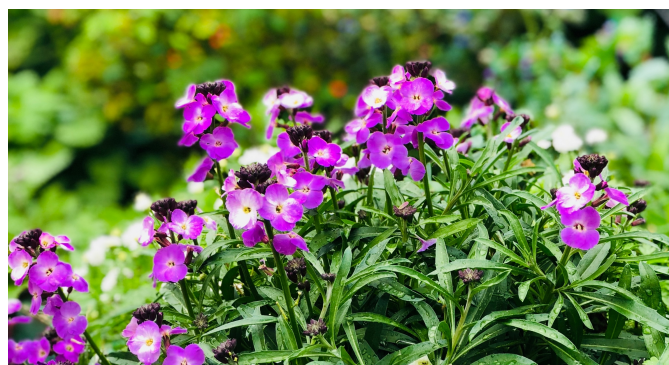
This course ties together many aspects of science to understand important issues such as the environment, pollution and climate change. You can also follow your own interests in Space or Earth Science with personal project work.

Pathway: This course can provide University Entrance credits and is a good introduction to many university science courses.

Course components

- Oceans and Earth's hydrosphere
- Atmosphere
- Space and Earth Science related project work
- Space science in the media

8	12	\$60	<input checked="" type="checkbox"/>
EXTERNAL CREDITS Maximum	INTERNAL CREDITS Maximum	DONATION Workbook and field trip	ENTRY Level 1 science 4 credits minimum and Level 1 literacy



SOCIAL SCIENCES | TIKANGA-Ā-IWI

Head of Faculty — Henry Hollis

Subject Overview

L1	Business Studies Classical Studies with English Faith & Force Geography 20th Century History Media Studies Media in Aotearoa NZ	L2	Business Studies Classical Studies with English Geography Journalism Moving Image Culture Modern Ideological History Media in Aotearoa NZ Psychology Papa Taiao	L3	Economics Classical Studies Geography Imperialism and Response, a Comparative History of Places Journalism Moving Image Culture Sociology Legal Studies Papa Taiao
----	---	----	---	----	---

L1 | BUS112

BUSINESS STUDIES

This is an introductory Business Studies course and provides an opportunity for you to undertake study in two subject areas, Economics and Business Studies. Working in groups, you will operate a school based enterprise.

Pathway: This course can lead to BUS223 and other Level 2 Social Sciences.

Course components

- The makeup of a small business
- Applying marketing to a product and carry out and review a business activity
- Understand producer choices using supply and how the market works

9	9	\$20	<input checked="" type="checkbox"/>
EXTERNAL CREDITS Course endorsement offered	INTERNAL CREDITS Literacy credits at L1	DONATION For capital for small business	ENTRY Open

L1 | GEO112

GEOGRAPHY

An introduction to thinking geographically about the world around them. Many of the topics will involve learning through real world experiences.

Pathway: This course is recommended for GEO223 and can lead other L2 Social Sciences.

Course components

- Understanding sustainability and Ecotourism
- Apply skills and knowledge in a Geographic environment
- Describe a geographic topic at a global scale including HIV or Piracy
- Understand the impact of a major earthquake on environments like Haiti, Christchurch and Wellington

8	10	\$27	<input checked="" type="checkbox"/>
EXTERNAL CREDITS Course endorsement offered	INTERNAL CREDITS Literacy and numeracy credits at L1	DONATION Skills book	ENTRY Open



L1 | HIS112

20TH CENTURY HISTORY

This course provides a broad overview of the 20th Century, with a focus on conflict and revolution. Both the wider world and New Zealand are explored.

Pathway: This course can lead to HIS223 or other Level 2 Social Sciences.

Course components

- Investigate the relationships between events in the past, and their effects on people(s)
- Understand the effect that perspective has on the representation of past events.
- Investigate the effect of past events on the present, or more recent past
- Interpret evidence, both primary and secondary, to make sense of History

8	12	\$ TBA	<input checked="" type="checkbox"/>
EXTERNAL CREDITS	INTERNAL CREDITS	DONATION	ENTRY
Course endorsement offered	Literacy credits at Level 1	There may be a cost for day excursions in the Wellington region.	Open

L1 | FFH112

FAITH AND FORCE IN HISTORY

This course aims to provide an understanding of the significant ideas within different religions and their role as historical forces. Key events in their development and interactions will be studied.

Pathway: This course can lead to all L2 Social Sciences.

Course components

- Understand the role of the sacred in communities
- Explore the tension between rights and responsibilities in society.
- Understand the symbolism of place and its power
- Describe the effect of belief on rules of representation

8	16	\$ TBA	<input checked="" type="checkbox"/>
EXTERNAL CREDITS	INTERNAL CREDITS	DONATION	ENTRY
Course endorsement offered	Literacy credits at Level 1	There may a cost for day excursions in the Wellington region	Open

L1 | MDS112

MEDIA STUDIES

A study of new media and how they are used and regulated, and analysing how media texts are constructed. You will also explore the design and production of a range of media products, including print and film.

Pathway: MIC223 or JRN223 and all Level 2 Social Sciences

Course components

- Understand how individuals interact with the media
- Understand selected elements of media text
- Understand selected elements of a film genre
- Produce a plan and complete a short film using specific conventions.

4	15	\$30	<input checked="" type="checkbox"/>
EXTERNAL CREDITS	INTERNAL CREDITS	DONATION	ENTRY
Course endorsement offered	Literacy and numeracy credits		Open

L1 | CLE112

CLASSICAL STUDIES WITH ENGLISH

This course explores the qualities that define both mythological and political heroes in art and literature. You do not need to take another English course but can if you wish.

Pathway: This course can lead to CLE223 and other Level 2 Social Sciences.

Course components

- Study the ideas and values in Homer's Odyssey
- Understand the art and relationships in the classical world
- Understand links between the classical world and other cultures
- Produce formal writing, show understanding of connections between texts using evidence

12	19	\$0	<input checked="" type="checkbox"/>
EXTERNAL CREDITS	INTERNAL CREDITS	DONATION	ENTRY
Course endorsement offered	Literacy credits.	Nil	Open although 10CLS is an advantage

L1 | MNZ112

MEDIA IN AOTEAROA NEW ZEALAND

This course focuses on New Zealand and Māori film and television, in the context of Aotearoa's stories. This is for you if you wish to connect with Te Ao and Te Reo Māori. It is not necessary to be studying Te Reo Māori to do this course.

Pathway: This course can lead to various Level 2 Social Sciences subjects.

Course components

- Demonstrate understanding of media texts in New Zealand
- Understand how the media cover a New Zealand current event
- Plan and complete a media product from a design using specific techniques
- Write a media text for a specific audience

4	15	\$25	<input checked="" type="checkbox"/>
EXTERNAL CREDITS	INTERNAL CREDITS	DONATION	ENTRY
Course endorsement offered	Literacy credits	For an SD card	Open

L2 | BUS223

BUSINESS STUDIES

This is a Business Studies course and provides an opportunity for you to undertake further study in two subject areas: Economics and Business Studies. Working in small groups, you will plan and operate a community based business.

Pathway: This course is recommended for ECO335 and other Level 3 Social Sciences.

Course components

- Analysing inflationary concepts
- Analysing international trade
- Carrying out a business activity
- Understanding the operations of a large business

12	9	\$20	<input checked="" type="checkbox"/>
EXTERNAL CREDITS	INTERNAL CREDITS	DONATION	ENTRY
Course endorsement offered	Literacy (for UE)	For capital for small business	Level 1 Numeracy and Literacy

Level 2

L2 | HIS223

MODERN IDEOLOGICAL HISTORY

This course explores responses to change through an ideological lens considering various geographic, religious and political contexts

Pathway: This course is recommended for HIS335 and can lead to other L3 Social Sciences.

Course components

- Explore the force of competing ideologies in modern conflicts
- Critically assess evidence to draw conclusions about the effect of perspective on the representation of events
- Apply understanding of continuity and change to selected contexts to explain modern circumstance
- Read critically to draw conclusions about the past

9	14	\$ TBA	<input checked="" type="checkbox"/>
EXTERNAL CREDITS	INTERNAL CREDITS	DONATION	ENTRY
Course endorsement offered	Literacy credits (for UE)	Optional Field trip to Tūrangāwhai and Opotiki	12 Credits from HIS112, another L1 Social Science or English

L2 | CLE223

CLASSICAL STUDIES WITH ENGLISH

Explore what it meant to be part of a city community in ancient Greece and Rome, and how that compares to modern life. You do not need to take another English course but can if you wish.

Pathway: This course can lead to CLS335 and other Level 3 Social Science Subjects.

Course components

- Examine ideas and values in the classical world
- Examine significant features of art and architecture
- Understanding of relationship between the classical world and other cultures
- Analyse written texts using evidence and produce formal written work
- This course may be taken as an alternative to ENG223 and includes English standards

12	16	\$0	<input checked="" type="checkbox"/>
EXTERNAL CREDITS	INTERNAL CREDITS	DONATION	ENTRY
Course endorsement offered	Literacy credits (for UE)	Nil	14 Credits in CLE112, ENG112 or another Level 1 Social Science.

L2 | GEO223 GEOGRAPHY

In this course, you will think geographically about your community and the world around you. Topics will involve learning through real world experiences.

Pathway: This course is recommended for GEO335 and can lead other L3 Social Sciences.

Course components

- Demonstrate understanding of Geographic skills
- Understand the human and environmental interactions within the Tongariro Volcanic Zone
- Explain the causes and distribution of child poverty in New Zealand.
- Explain the global causes and consequences of human trafficking

8	11	\$TBA	<input checked="" type="checkbox"/>
EXTERNAL CREDITS	INTERNAL CREDITS	DONATION	ENTRY
Course endorsement offered	Literacy and numeracy credits (for UE)	Skills book and Field trip to Tongariro	13 Credits from GEO112 or another L1 Social Science or English

L2 | MIC223 MOVING IMAGE CULTURE

You will develop media literacy and understand the use of mass media, particularly film. You become a critical consumer of the media and use these skills in the production of your own media product – video.

Pathway: This course can lead to MIC335 and other Level 3 Social Science Subjects

Course components

- Understand the way that narrative and representation influence media texts
- Show understanding of an aspect of a specified genre
- Plan and complete a film using a range of conventions
- This course shares standards with JRN223

4	17	\$ 30	<input checked="" type="checkbox"/>
EXTERNAL CREDITS	INTERNAL CREDITS	DONATION	ENTRY
Course endorsement offered	Literacy credits (for UE)	16Gb USB Thumb Drive and a 16Gb SD Card	14 Credits from MDS112 or another Level 1 Social Science.

L2 | PSY223 PSYCHOLOGY

You will study human nature, the mind and what motivates us by exploring theories of memory, personality, addiction and crime

Pathway: This course can lead to Level 3 Social Sciences.

Course components

- Examine how psychological debates change over time
- Conduct psychological research with guidance
- Investigate psychological theories and approaches
- Explore ethical issues in psychological practice

0	21	\$ 0	<input checked="" type="checkbox"/>
EXTERNAL CREDITS	INTERNAL CREDITS	DONATION	ENTRY
	Literacy credits (for UE)	Nil	Level 1 Literacy is strongly recommended.

L2 | JRN223 JOURNALISM

This course focuses on the theoretical and practical production application in understanding and producing print media texts. You will develop tools to analyse and make your own messages and meanings in a media-saturated world.

Pathway: This course can lead to Level 3 Social Sciences.

Course components

- The role of print media and the written word as a means of communicating news, ideas and opinions
- Develop the principles of layout and various programs such as InDesign and Photoshop
- Strong initiative and independence is expected and an ability to meet deadlines is vital
- This course shares standards with MIC223

4	16	\$0	<input checked="" type="checkbox"/>
EXTERNAL CREDITS	INTERNAL CREDITS	DONATION	ENTRY
Course endorsement offered	Literacy credits (for UE)	Nil	14 Credits from MDS112, ENG112 or another Level 1 Social Science

Level 3

L2/3 | PPT223

PAPA TAIAO

You will explore what a sustainable future means for you through practical out of class programmes. You will develop your own enterprise for sustainability by working with local experts.

Pathway: This course can lead to careers in conservation or sustainability -based industries.

Course components

- Project based learning focussed on sustainability issues
- Learn and understand the requirements for a group managed community contribution project
- Develop confidence and communication skills and a strong work and team based ethic
- Work with industry experts to enhance learning and project implementation

0	24	\$0	<input checked="" type="checkbox"/>
EXTERNAL CREDITS	INTERNAL CREDITS	DONATION	ENTRY
	Literacy and numeracy	Nil	Open

L3 | CLS335

UE / SCHOL

CLASSICAL STUDIES

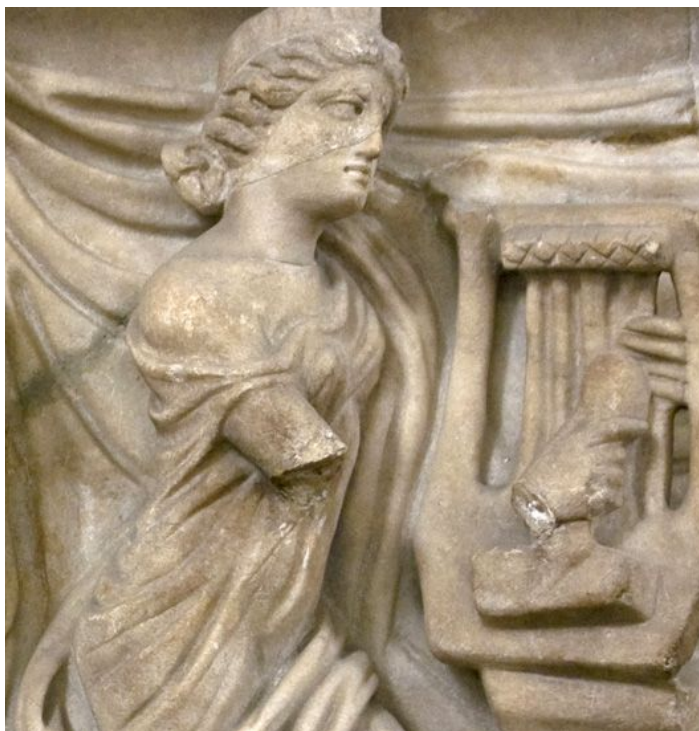
You will explore the social, artistic and ideological aspects of the classical world. Particular focus will be on philosophy, mythology, concepts and beliefs of religion and political propaganda.

Pathway: This course can lead to tertiary study.

Course components

- Analyse ideas and values of the classical world
- Analyse the significance of Art in the classical world
- Understand of significant ideologies in the classical world
- Understanding of the influence of the classical world on other cultures

10	12	\$0	<input checked="" type="checkbox"/>
EXTERNAL CREDITS	INTERNAL CREDITS	DONATION	ENTRY
Course endorsement offered	Literacy credits	Nil	14 Credits in CLE223 or another Social Science



L3 | ECO335

UE / SCHOL

ECONOMICS

Understanding of advanced economic concepts and the way in which the New Zealand economy operates is important for young people if they are to function in and contribute to our society.

Pathway: This course can lead to tertiary Study.

Course components

- How market equilibrium leads to efficiency
- Understanding micro-economic concepts
- Understanding government intervention in the market
- Understanding macro-economic influence in New Zealand

10	10	\$0	<input checked="" type="checkbox"/>
EXTERNAL CREDITS	INTERNAL CREDITS	DONATION	ENTRY
Course endorsement offered	Literacy credits	Nil	Level 1 Numeracy and Literacy & 12 credits from BUS223 or L2 Social Science

L3 | GEO335

UE / SCHOL

GEOGRAPHY

Develop deeper thinking of geographical concepts including various Human and Physical processes that impact both the local and international environments. This includes studying local coast lines, local and international tourism.

Pathway: This course can lead to tertiary study.

Course components

- Understand the human and physical interactions that contribute to the coastal environment of the Kapiti Coast.
- Understand the cultural interactions that contribute to tourism in Rotorua
- Analyse the causes and consequences of Refugees and Asylum seekers
- Demonstrate understanding of a variety Geographic skills

12	11	\$TBA	☑
EXTERNAL CREDITS Course endorsement offered	INTERNAL CREDITS Literacy and numeracy credits (for UE)	DONATION Field trips to Kapiti and Rotorua & skills book	ENTRY 12 Credits from GEO223 or another Level 2 Social Science or English

L3 | JRN335

UE / SCHOL

JOURNALISM

The primary component of this course is the production of *The Flannel* magazine. You assume control of all aspects of production including editorial policy, writing, designing, desktop publishing, and graphics.

Pathway: This course can lead to tertiary study, or the world of work.

Course components

- Show understanding of the relationship between a media genre and society
- Develop and produce a media product that meets a brief
- Write a media text to meet a brief.
- Develop skills in various software products to produce a Flannel Article

4	13	\$0	☑
EXTERNAL CREDITS Course endorsement offered	INTERNAL CREDITS Literacy credits (for UE)	DONATION Nil	ENTRY 14 Credits from JRN223, ENG223 or another Level 2 Social Science.

L3 | LGS334

LEGAL STUDIES

You will examine the nature of law and government, and citizens' interactions with the public, civil and criminal justice systems. The assessments are by way of graded unit standards, so endorsement is possible, but they are not university approved standards.

Pathway: This course can lead to tertiary study or directly to employment in a wide variety of fields.

Course components

- Study different systems of Government and how they are formed
- Evaluate the idea of Democracy and the role of the Government
- Study the concepts of both Law and Justice
- Examine how people may challenge State power through the courts

6	20	\$0	☑
EXTERNAL CREDITS Course endorsement offered	INTERNAL CREDITS Literacy credits (for UE)	DONATION Nil	ENTRY Level 2 NCEA

L2 | MIC335

UE / SCHOL

MOVING IMAGE CULTURE

You develop media literacy and understanding and using mass media. You will enhance your critical understanding of media messages and develop skills in the production of your short film.

Pathway: This course can lead to tertiary study or employment.

Course components

- Develop a deeper understanding of the use of media texts
- Show understanding of a media genre and society
- Plan and produce a short film using conventions appropriate to a genre
- This course shares standards with JRN223

4	13	\$ 30	☑
EXTERNAL CREDITS Course endorsement offered	INTERNAL CREDITS Literacy credits (for UE)	DONATION 16Gb USB Thumb Drive and a 16Gb SD Card	ENTRY 14 Credits from MIC223 or another Level 2 Social Science subject.

IMPERIALISM AND RESPONSE, A COMPARATIVE HISTORY OF PLACES

This program covers the consequences of the European reformation, and competitive territorial expansion, across continents. Contrasting forces, and the effects of these on people(s) are explored. Learning traverses four centuries, and takes a Big History approach.

Pathway: This course can lead to tertiary study, or directly to employment in a wide variety of fields.

Course components

- Consider History as a construct, and the role of the Historian
- Explore the effect of scholarship from integrated disciplines on ways of seeing the past
- Compare the first contact period of the Americas, South East Asia and the Pacific
- Investigate the data to draw conclusions about change across significant periods of time, reading widely and critically

12	15	\$ TBA	<input checked="" type="checkbox"/>
EXTERNAL CREDITS Course endorsement offered	INTERNAL CREDITS Literacy credits (for UE)	DONATION Optional Field trip to Tūranganui-a-kiwa and Opotiki	ENTRY 14 Credits from HIS223 or another L2 Social Science subject or English

SOCIOLOGY

The course explores the effects of powerful social forces and ideologies on communities and individuals, both geo-politically and in small local communities. The competition between value systems and its effects are central to the learning.

Pathway: This course leads to tertiary study or the world of work.

Course components

- Understand how groups make use of social forces to create change in communities
- Test Newton's law "for every action, there is an equal and opposite reaction" in the environment of human interaction, social forces and belief systems
- Learn to develop and communicate a campaign to make positive change in our community

4	16	\$ TBA	<input checked="" type="checkbox"/>
EXTERNAL CREDITS Course endorsement offered	INTERNAL CREDITS Literacy credits (for UE)	DONATION There may a cost for day excursions in the Wellington region	ENTRY Level 2 NCEA



TECHNOLOGY | HANGARAU

Head of Faculty — Peter Jessop

Subject Overview

L1	L2	L3
Computer Science Crest* Electronics* Design Visual Communications Digital Media Fashion and Product Food Technology Furniture & Cabinet Making General Business Computing Hospitality Mechanical Engineering *these are multi-level courses	Barista Skills Computer Science Crest* Electronics* Design Visual Communications Digital Media Fashion and Product Food Technology Furniture & Cabinet Making General Business Computing Hospitality Mechanical Engineering Practical Workshop Sonic Arts*	Computer Science Crest* Electronics* Design Visual Communications Digital Media Fashion and Product Food Technology Hospitality Practical Workshop Sonic Arts*

L1 | MEG112

MECHANICAL ENGINEERING

This course is for those of you who wish to develop your knowledge and skills in a mostly metal based workshop environment. The course is delivered through engineering projects and is particularly suitable for those who may be interested in engineering-related careers. Projects include metal clamps and mechanical wind ornament. Health and Safety in the workplace takes a high priority and good attendance is expected to complete these elements of the course.

Pathway: The course allows a pathway to higher level qualifications, apprenticeship or gateway (part school, part workshop) opportunities.

Course components

- A project-based making programme that allows use of a huge range of hand and machine tools

0	24	\$0	<input checked="" type="checkbox"/>
EXTERNAL CREDITS	INTERNAL CREDITS	DONATION	ENTRY
Nil	Maximum	Nil	Good common sense, safety consciousness, and an interest in practical workshop activity

L1 | GBC110

GENERAL BUSINESS COMPUTING

This course offers an all-round computing experience. The course is built on major programs used in business such as word processing, spread sheets, desktop publishing and so on. There is also graphics, working with sound and a little coding to give a complete selection of possibilities. The varied nature of the units reflects the exciting nature of the course.

Pathway: The course allows access to GBC220

0	16	\$0	<input checked="" type="checkbox"/>
EXTERNAL CREDITS	INTERNAL CREDITS	DONATION	ENTRY
Nil	Maximum	Nil	Open

L1 | FTE112

FOOD TECHNOLOGY

You will develop your own ideas and skills through enquiry, creative problem solving and food science. The course meets the needs of any student who is interested in the design and development of food products.

Pathway: This course leads to FTE223.

Course components

- The focus is on design, product development and how ingredients function

4	16	\$0	<input checked="" type="checkbox"/>
EXTERNAL CREDITS	INTERNAL CREDITS	DONATION	ENTRY
Course endorsement offered	Literacy credits (4)	Nil	Open



L1 | FAP112

FASHION AND PRODUCT

You will generate projects around screenprinting, making patterns and your own products. Designing your own fabrics, and fashion illustration, are all interwoven in the portfolios of creativity.

Pathway: *The course leads to FPT223*

Course components

- A full year focused on techniques and then implementing procedures to make products

3	13	\$0	<input checked="" type="checkbox"/>
EXTERNAL CREDITS	INTERNAL CREDITS	DONATION	ENTRY
Course endorsement offered	Maximum	Nil	Successful completion of the Year10 FAB course is preferred.

L1 | CSC112

COMPUTER SCIENCE

This course is for you if you are interested in programming or computer engineering. CSC112 includes an introduction to algorithms, usability data, encoding, and programming in two of the most popular commercial programming languages – Python and Javascript. The major part of the course is designing and programming a simple game using Javascript.

Pathway: *Level 2 Computer Science course*

Course components

- Working with algorithms and creating computer programs

3	15	\$0	<input checked="" type="checkbox"/>
EXTERNAL CREDITS	INTERNAL CREDITS	DONATION	ENTRY
Maximum	Literacy credits (12)	Nil	Successful completion of 10CSC, 10DGM or by consultation



L1 | DVC112

DESIGN AND VISUAL COMMUNICATION

This course is project based and covers spatial / architectural design and product design as well as drawing for design, design history and presentation techniques. You are expected to develop a range of design drawing skills to communicate your ideas. Excellent time management and the ability to meet project deadlines are also required.

Pathway: *The course allows a pathway to higher level qualifications, apprenticeship or gateway (part school, part workshop) opportunities.*

Course components

- Generating design ideas and then communicating them through a variety of methods and media

6	13	\$0	<input checked="" type="checkbox"/>
EXTERNAL CREDITS	INTERNAL CREDITS	DONATION	ENTRY
Course endorsement offered	Literacy and numeracy credits	Nil	Successful completion of the 10DVC course

L1 | HOS112

HOSPITALITY

This course is an introduction to the skills required to work in a commercial kitchen environment.

Pathway: *HOS223*

Course components:

- Ingredient knowledge and associated cookery methods
- Food preparation skills
- Food safety and hygiene

0	15	\$0	<input checked="" type="checkbox"/>
EXTERNAL CREDITS	INTERNAL CREDITS	DONATION	ENTRY
Maximum	Maximum	Nil	Open



L1 | DGM112

DIGITAL MEDIA

On this course, you will build a repertoire of skills to design and make web pages using HTML5 and CSS3. There will also be a study of programs that support this such as Photoshop for graphical work and Audacity for sound files. The course is project based and learning is integrated, so project management skills will be developed. There is also a study of design concepts which leads to a report for external assessment.

Pathway: The course allows access to DGM223 on successful completion.

Course components

- The creation of digital media in a project format

3	15	\$0	<input checked="" type="checkbox"/>
EXTERNAL CREDITS	INTERNAL CREDITS	DONATION	ENTRY
Course endorsement offered	Literacy credits (15)	Nil	Successful completion of the 10DGM course

L2 | FPT223

FASHION AND PRODUCT

You will generate projects around making products of your choice. Fashion illustration, making your own patterns, and sewing are all interwoven in the creative portfolios.

Pathway: The course leads to FPT335

Course components

- Designing techniques and then implementing a wider range of procedures to make products

3	14	\$0	<input checked="" type="checkbox"/>
EXTERNAL CREDITS	INTERNAL CREDITS	DONATION	ENTRY
Course endorsement offered	Literacy credits	Nil	12 credits gained from FAB112 and 10 credits from Level1 English

Level 2

L2 | CSC223

COMPUTER SCIENCE

This course is for you if you are interested in computer science and network engineering. The course covers usability, data representation and encoding, and practical skills with theoretical knowledge associated with local area network technologies. You will learn to program in two languages – Python and Javascript. You will work on a simple image processing project. Those students who have completed all assessment material will be encouraged to work towards individual scholarship or extension projects.

Pathway: The level 3 Computer Science course

Course components

- We focus on planning, coding and program development

3	15	\$0	<input checked="" type="checkbox"/>
EXTERNAL CREDITS	INTERNAL CREDITS	DONATION	ENTRY
Maximum	Literacy credits (10)	Nil	9 credits from CSC112 or by consultation

L2 | GBC220

GENERAL BUSINESS COMPUTING

This course develops the all-round computing experience from GBC110. There is a wide selection of programs studied and some more advanced features will be used, appropriate to level 2. Word processing is used and includes typing. Spreadsheets, Desktop Publishing and Presentations are all present along with asset programs such as Photoshop and Audacity.

Pathway: Possible Weltec and Polytech courses, office and admin employment

Course components

- A range of unit standards address the Level 2 outcomes in each of the applications studied

0	16	\$0	<input checked="" type="checkbox"/>
EXTERNAL CREDITS	INTERNAL CREDITS	DONATION	ENTRY
Nil	Maximum	Nil	Successful completion of the PCS110 course or by negotiation

L2 | PWK220

PRACTICAL WORKSHOP

This course is mainly practically based and the assessments reflect this. Workshop skills are gained and materials knowledge is developed allowing you to make a range of items using a variety of materials and processes. A consistently good level of attendance is essential to allow for tutorials/ demonstrations in health and safety and machine training for the projects undertaken.

Pathway: *Entry to the PWK334 course.*

Course components

- We focus on safe workshop practice and the ability to work with hand and machine tools

0	16	\$0	<input checked="" type="checkbox"/>
EXTERNAL CREDITS Nil	INTERNAL CREDITS Maximum	DONATION Nil	ENTRY Open. Good common sense, safety consciousness, and an interest in practical workshop activity required.

L2 | ELT223

ELECTRONICS

This is a school based Industry course for those interested in electronics. The course covers theory and practical aspects of electronics. You will finish this course with two fully working electronic devices and a good understanding of electronics theory. Full completion of the National Certificate requires completion of a further elective 16 credits outside of this course.

Pathway: *This course allows access to the levels 3 Electronics course.*

Course components

- Unit standards based on demonstrating knowledge and the practical ability to create working circuits

0	24	\$0	<input checked="" type="checkbox"/>
EXTERNAL CREDITS Nil	INTERNAL CREDITS Maximum	DONATION Nil	ENTRY 12 credits from SCI112 and 8 credits from Level 1 Mathematics

L2 | MEG222

MECHANICAL ENGINEERING

This course is for you if you wish to develop your knowledge and skills in a mostly metal based workshop environment. The course is delivered through engineering projects. It is particularly suitable for you if you are interested in engineering-related careers as it offers a well-balanced practically orientated course. Health and Safety in the workplace take a high priority and good attendance is expected to complete these elements of the course in particular.

Pathway: *The course allows a pathway to higher level qualifications, apprenticeship or gateway (part school, part workshop) opportunities.*

Course components

- A collection of making engineering projects from technical plans that expands your skill set and knowledge.

0	18	\$0	<input checked="" type="checkbox"/>
EXTERNAL CREDITS Nil	INTERNAL CREDITS Maximum	DONATION Nil	ENTRY Successful completion of course MEG 112 and brief interview with HoF/TIC

L2 | HOS223

HOSPITALITY

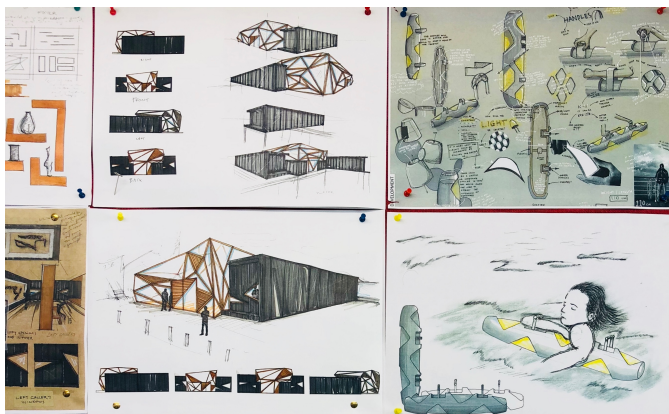
In this course, you will be developing the cookery and food service skills required for the hospitality industry. You will have the opportunity to enter a range of cookery competitions and further develop skills through catering for a variety of functions.

Pathway: *HOS334, further training at polytechnic, an apprenticeship or work in the food service industry.*

Course components

- Further development of food preparation and cookery skills
- The development of Front of House service skills

0	16	\$0	<input checked="" type="checkbox"/>
EXTERNAL CREDITS Maximum	INTERNAL CREDITS Maximum	DONATION Nil	ENTRY Open



L2 | DVC223

DESIGN AND VISUAL COMMUNICATION

This course continues to be project based and covers spatial and product design areas. While the major emphasis is still on hand based drawing of ideas, you are expected to extend your use of a range of media, computer graphics and a range of graphical skills to communicate their design ideas. Excellent time management skills are required.

Pathway: The course leads towards level 3 DVC

Course components

- Generating and developing design ideas and communicating them through a yet wider variety of methods

3	15	\$0	<input checked="" type="checkbox"/>
EXTERNAL CREDITS	INTERNAL CREDITS	DONATION	ENTRY
Course endorsement offered	Literacy credits (9)	Nil	18 credits from DVC112

L2 | FTE223

FOOD TECHNOLOGY

This course extends the skills and knowledge learnt in Year 11 Food Technology. It allows you to use your creative problem solving skills and food science to develop your own ideas from conceptual design through to the development of a prototype product.

Pathway: The course leads to FTE335.

Course components

- Processing and trialling a prototype, developing a wider range of skills and knowledge

4	16	\$0	<input checked="" type="checkbox"/>
EXTERNAL CREDITS	INTERNAL CREDITS	DONATION	ENTRY
Course endorsement offered	Literacy credits (4)	Nil	Level 1 literacy and numeracy credits

L2 | BAR223

BARISTA SKILLS

This course offers you the opportunity to gain a certificate in barista skills. This is a full year course and covers theory of coffee as well as practical barista skills. You will have the opportunity to learn the mechanics of an espresso machine. Apart from class time, you will have to commit to sharing barista duties over lunch times and some school events.

Pathway: Employment as a barista – full or part time

Course components

- All aspects of preparation and presentation of coffee services

0	18	\$0	<input checked="" type="checkbox"/>
EXTERNAL CREDITS	INTERNAL CREDITS	DONATION	ENTRY
Nil	10 at Level 2 and 8 at Level 3	Nil	Open



L2 | DGM223

DIGITAL MEDIA

This course has web site creation at its focus. You will use more advance dynamic features to create a site fit for purpose. There is an external report on an IT topic, as well as a unit that builds a database with a dynamic link to web pages.

Pathway: The course allows access to DGM335 on successful completion.

Course components

- The creation of dynamic digital media in a project format
- The creation of a dynamically linked database

4	10	\$0	<input checked="" type="checkbox"/>
EXTERNAL CREDITS	INTERNAL CREDITS	DONATION	ENTRY
Course endorsement offered; Literacy	Literacy credits	Nil	14 credits from the DGM112 course

Level 3

L3 | DVC335

UE / SCHOL

DESIGN AND VISUAL COMMUNICATION

This course is for able students who have strong design interests and have proved their abilities at Level 2 to a high standard. An architectural design brief will be worked through. You will be expected to work conceptually, with innovation and creativity. The range of methods utilised in the course may include freehand drawing, instrumental drawing, presentation techniques, mock-up and model making, and computer generated design as well as investigative, descriptive and evaluative writing. Excellent time management skills are required.

Pathway: Architecture, Graphic Design, Industrial Design, or Engineering at University. Technical courses at diploma level.

Course components

- Preparing a portfolio that uses and develops graphics practice to design for an audience

4	12	\$0	<input checked="" type="checkbox"/>
EXTERNAL CREDITS	INTERNAL CREDITS	DONATION	ENTRY
Course endorsement offered	Maximum	Nil	15 credits from DVC223

L3 | HOS334

HOSPITALITY

This Service IQ approved course is designed to give you specific industry training which will be advantageous for a career in Hospitality. The course has a large practical component and you are expected to demonstrate independence and a level of professionalism required to be working in a commercial kitchen.

Pathway: Entry into Weltec Polytechnic, Food Service Industry or the New Zealand Apprenticeship

Course components

- Food preparation and commercial kitchen methods at an advanced level

0	18	\$0	<input checked="" type="checkbox"/>
EXTERNAL CREDITS	INTERNAL CREDITS	DONATION	ENTRY
Maximum	Maximum		Unit Standard 167. is ESSENTIAL

L3 | ELT335

UE / SCHOL

ELECTRONICS

This is a hands-on course with a chance to create electronic systems that interact in complex ways with their environment. The course covers the construction and improvement of electronic systems, and creation of interfacing procedures electronic circuits and microcontroller software. CNC machinery use will also be covered. The course builds on the knowledge and skills gained during the ELT223 course.

Pathway: This course makes a good step towards either industry training courses or further education courses.

Course components

- Circuit design and manufacture using computer circuit programs as well as a wide range of chips and components

0	16	\$0	<input checked="" type="checkbox"/>
EXTERNAL CREDITS	INTERNAL CREDITS	DONATION	ENTRY
Nil	Maximum	Nil	14 credits from ELT223 and 12 credits from Level 2 Maths

L3 | PWK334

PRACTICAL WORKSHOP

This course builds on the PWK220 course. It is project based and involves a high level of practical activity gaining more skills and a greater knowledge of process and materials. Work extends to use of CAD CAM machinery to produce accurate repeatable work pieces.

Pathway: Possible Weltec and Polytech courses, possible employment/ apprenticeship opportunities.

Course components

- A range of unit standards address the Level 3 outcomes in each of the applications studied. These are based on safe workshop practice, and the ability to work with a wider range of machine tools

0	16	\$0	<input checked="" type="checkbox"/>
EXTERNAL CREDITS	INTERNAL CREDITS	DONATION	ENTRY
Nil	Maximum	Nil	Open. Good common sense, safety consciousness, and an interest in practical workshop activity required.

L3 | FPT335

UE / SCHOL

FASHION AND PRODUCT

You will work on a major fashion project that involves pattern-making, construction, and fashion illustration. Wearable art, original garments and products, and screenprinting are all interwoven into the creative portfolios.

Pathway: *University design courses, apprenticeships, polytechnic diploma courses*

Course components

- Designing techniques and then implementing advanced procedures to make products

4	16	\$0	<input checked="" type="checkbox"/>
EXTERNAL CREDITS	INTERNAL CREDITS	DONATION	ENTRY
Course endorsement offered	Maximum	Nil	12 credits gained from FAB223 and 12 credits from Level 2 English/ Painted Word and by consultation.

L3 | CSC335

UE / SCHOL

COMPUTER SCIENCE

This is a course that focuses on programming, computer science and network engineering. It introduces you to a wide range of real world programming and data modelling skills that are transferable to industry and further tertiary studies. You will also learn about formal programming languages through practical exercises. You will learn the practical skills and theoretical knowledge associated with wide area network technologies.

Pathway: *University or similar tertiary study.*

Course components

- WAN understanding and administering, as well as program creation

4	14	\$0	<input checked="" type="checkbox"/>
EXTERNAL CREDITS	INTERNAL CREDITS	DONATION	ENTRY
Course endorsement offered	Literacy (18) and numeracy (6) credits	Nil	9 credits from CSC223 or Level 2 Mathematics

L3 | FTE335

UE / SCHOL

FOOD TECHNOLOGY

This course extends the knowledge, understanding and capabilities in technology focusing on food product development. You will use technological practice to work on individual products with clients and resolve a wide range of real opportunities, needs and problems. Scholarship Technology is also available to suitable candidates.

Pathway: *University courses*

Course components

- Developing a prototype that is fit for purpose and developing a more advanced level of materials knowledge

4	16	\$0	<input checked="" type="checkbox"/>
EXTERNAL CREDITS	INTERNAL CREDITS	DONATION	ENTRY
Course endorsement offered	Maximum	Nil	Level 1 literacy and numeracy credits

L3 | DGM335

UE / SCHOL

DIGITAL MEDIA

You will create a website using advanced features for a site that is fit for purpose for your stakeholder. A dynamically linked relational database is also made, reflecting the real-world context of this course. A report for the external unit is a feature of this course.

Pathway: *University courses, IT apprenticeships.*
The course is University approved.

Course components

- A range of new Digital Media Achievement standards will be used to assess the focus which is the creation of dynamic digital media in a project format
- The creation of a dynamically linked relational database

4	16	\$0	<input checked="" type="checkbox"/>
EXTERNAL CREDITS	INTERNAL CREDITS	DONATION	ENTRY
Course endorsement offered	Literacy and numeracy credits	Nil	14 credits from the DGM223 course

Multi-Level Courses

L1 | ELT112

UE / SCHOL

ELECTRONICS

The course is a commitment for 2 or 3 years which will lead to Level 2/3 credits as well as a Certificate in Electronics award. The course assumes no prior knowledge and will introduce you to a wide range of components and practical projects so you can create a range of circuits. All aspects of electronics are developed from individual components through to reprogrammable microchips.

Pathway: This course leads to the level 3 Electronics course which uses university approved standards and so to tertiary courses thereafter.

Course components

- 24 Level 2 credits for Certificate accreditation plus
- 16 Elective credits using Technology / Digital technology standards
- Following the course to Level 3, 40 L3 credits, 22 of which are compulsory from the ETITO collection, and 18 are electives from Digital Technology standards

3—6	37—74	\$0	<input checked="" type="checkbox"/>
EXTERNAL CREDITS Maximum is 3 across 2 years & 6 across 3 years Course endorsement offered	INTERNAL CREDITS Maximum across 2 years & 74 across 3 years; Literacy and Numeracy electives at L2 and L3	DONATION Nil	ENTRY Year 10 Mathematics

L2 & L3 | SON223/334

SCHOL

SONIC ARTS

This course gives you the opportunity to work in a range of areas, including music technology, electronic music, intermedia, audio plug-in design and electronic circuit design. In addition, you will gain a broad knowledge of ICT programs that have become standard in many industries.

Pathway: Entry into the electronic (and a very valuable step into computing) industries, apprenticeships or universities to develop studies.

Course components

- Editing sequencing and manipulation of sound files is at the heart of the course.

0	18	\$0	<input checked="" type="checkbox"/>
EXTERNAL CREDITS Nil	INTERNAL CREDITS Literacy credits (4)	DONATION Nil	ENTRY entry dependent upon consultation with HoF/TIC

L1 & L2 | FAC120/220

FURNITURE AND CABINET MAKING

This course is aimed at students who enjoy, or feel they would enjoy, working in a workshop environment producing pieces of timber furniture from working drawings. It follows a traditional apprenticeship-style approach. You will gain skills in using woodworking, hand and power tools, as well as processes and materials knowledge. This L2 course is also industry recognised.

Pathway: The course leads to FAC220

Course components

- The correct and safe use of hand and power tools, and the construction of furniture pieces

0	17	\$0	<input checked="" type="checkbox"/>
EXTERNAL CREDITS Nil	INTERNAL CREDITS Maximum	DONATION Nil	ENTRY Commitment to Health & Safety; good attendance & enthusiasm

UE / SCHOL

L1, L2 & L3 | CRE112/223/335

CREST Silver and CREST Gold

This is a multi-level course available to any interested student from Year 11 to Year 13. In this course, you will work towards a CREST award. CREST is a Royal Society Te Aparangi programme where you apply creative problem solving and innovative science and technological solutions to authentic problems. One of the projects available to you is the NZIFST student product development challenge. Mentored by experts and developing a new food product for an industry client, this presents an amazing opportunity if you have an interest in both science and food technology careers.

Pathway: Depending on the level of course, you can move on to the next CREST award. For Level 3 students, it will be University or Polytechnic courses.

Course components

- This is a product development challenge which has brought the school much success in recent years.

12	16	\$0	<input checked="" type="checkbox"/>
EXTERNAL CREDITS Over 3 years Course endorsement offered	INTERNAL CREDITS CREST students gain credits for brief development (4), conceptual design (6) and prototyping (6) at each level, at the very least	DONATION Nil	ENTRY Open

CROSS-CURRICULAR

Subject Overview

L1	WHS INCUBATOR	L2	WHS INCUBATOR
----	---------------	----	---------------

L1 & L2 | INC122 WHS INCUBATOR

This course is an invitation to bring the co-curricular into the curriculum - and drive for social change through a personal impact project.

Assessment opportunities will be negotiated and naturally occurring from your project.

This will be for you if:

- you have a project idea that doesn't fit into a single faculty area;
- you are ready to learn about leading your own independent project; and if
- you want to know how to design and create a truly innovative product, service or movement.

Pathway: This course can prepare you for any subject that has inquiry, innovation and project planning at its heart. E.g. Technology, Science, Social Sciences

Course components

- Project planning, pitching and idea generation
- Design thinking processes and agile methodology to make your ideas a reality.
- Working with wider community groups and initiatives

See Karen Spencer (Karen.spencer@whs.school.nz) if you would like further information about this programme.

0	TBA	\$0	<input checked="" type="checkbox"/>
EXTERNAL CREDITS	INTERNAL CREDITS	DONATION	ENTRY
Nil	Assessment opportunities will be determined by the context of your project.	Nil	Open. A short pitch may be invited by the Teacher in Charge.



TRADES & CAREERS

Head of Careers — Chuni Bhikha

L2	Transition Course Trades Academy Gateway Courses Training & study beyond WHS	L3	Trades Academy Gateway Courses Training & study beyond WHS
----	---	----	--

L2 | TNC222

TRANSITION COURSE

This is a targeted transition course to help you move into meaningful employment or further education and training with a minimum of NCEA Level 2. Work experience placements will be for 10 weeks, one day a week

Pathway: This course will give you the opportunity to explore career pathway ideas and may lead to entry into a trade choice beyond WHS.

Course components

- At least one Gateway work placement via expression of interest
- A Health and Safety programme to improve employability skills (15 credits)
- Study related to your Gateway placement where possible
- Study for your Driver's License
- Weltec day tasters based on your interests

0	15	\$0	<input checked="" type="checkbox"/>
EXTERNAL CREDITS	INTERNAL CREDITS plus school credits	DONATION Nil	ENTRY Open
Nil			

L2 / L3

GATEWAY / STAR COURSES

Gateway is a formal work experience programme for Year 12 /13 students. You must apply for the programme, will be interviewed and have your suitability assessed by the Gateway Coordinator. High levels of regular attendance at school are required. Placements occur in a whole range of workplaces, according to your interests and involve working one day a week for 10/11 weeks.

For more information/expression of interest form, please contact Chrissy.laing@whs.school.nz (Gateway Administrator) and Terry.Hawkins@whs.school.nz (TiC Gateway)

0	20	\$0	<input checked="" type="checkbox"/>
EXTERNAL CREDITS	INTERNAL CREDITS	DONATION Nil	ENTRY Open
Nil	Maximum		

L2 | WTA222

WELLINGTON TRADES ACADEMY

Want to stay at school but try something different? Trades Academy lets you enjoy both worlds. Enjoy the benefits of staying at secondary school but learn new, relevant skills for your career at the Trades Academy. WHS partners with a Vocational Pathway programme that allows you to achieve NCEA L2. You'll be coached by industry professionals keen to share their expertise.

Pathway: This course can lead to employment, apprenticeships or higher-level studies.

Course components

- Three days at school and two days of a practical learning programme to learn new skills
- Earn credits towards your NCEA L2 and a National Certificate in your Trades Academy area
- Relevant safety gear, materials and field trips are provided
- **NOTE:** If you choose this option, you will only do 3 or 4 subjects when at school

0	47	\$0	<input checked="" type="checkbox"/>
EXTERNAL CREDITS	INTERNAL CREDITS plus school credits	DONATION Plus subsidised transport	ENTRY Open. Make an appointment with Chuni Bhikha, Careers
Nil			
Programmes		Level	Campus
Automotive and Engineering		2	Weltec
Construction		2	Weltec
Hair and Beauty Salon Support		2	Weltec
Hospitality		2	Weltec
Fitness		2	Weltec
Animal Care		2	Weltec
Creative Technologies		2	Weltec
Trades Skills		2	Whitireia
Engines		2	Whitireia
Salon Environment		2	Whitireia
Hospitality Services		2	Whitireia
Early Childhood Studies		2	Whitireia
Health Sciences (1 Day only)		2	Whitireia

BEYOND WELLINGTON HIGH

If you are 16 years old, and ready to progress from school directly on to a career-focused pathway, Wellington High can help you make that transition. We have assisted many young people to join trades and employment courses at the following Wellington education centres:

CAPITAL TRAINING | <http://www.capitaltraining.co.nz/>

Capital Training is a lower North Island-based, NZQA accredited, private training establishment (PTE) offering a wide spectrum of courses and qualifications to prepare you for the modern workplace. They provide a range of youth guarantee (fees free) courses in retail, business administration, computing, hospitality and construction. They have training centres in Lambton Quay, Upper Hutt, Lower Hutt, Paraparaumu, Waipukurau and Otaki, as well as providing in-work training nationwide.



G&H TRAINING | <https://www.ghtraining.co.nz/>

G&H specialises in training for trades, and their passion lies in providing students with the knowledge and practical skills needed to make an active contribution and have a life-long career in today's exciting industry. They are based in Lower Hutt, enrol each week all year and offer courses in automotive, construction and carpentry.



NZIS — New Zealand Institute of Sport | <https://www.nzis.co.nz>

The New Zealand Institute of Sport (NZIS) provides tertiary level education for those interested in a career in the Sport, Fitness and Recreation industry. Courses have been developed to reflect the rapidly expanding and changing needs of this growing industry. Courses include: foundation sport courses, Personal Training and Pre-Police certificates. These act as a pathway to higher level qualifications. Students are also supported with the tools to enhance their own sporting performance.



WELTEC | <https://2018.weltec.ac.nz/>

The Wellington Institute of Technology – WelTec – is a tertiary institution training around 8000 students every year. They offer 150+ courses, industry-led qualifications from trades through to degrees and postgraduate programmes. WelTec qualifications are future focused, developed alongside industry and provide you with practical skills so you can pursue your career goals.



WHITIREIA | <https://www.whitireia.ac.nz/study-programmes/>

Whitireia is the tertiary institution of choice for over 6,200 students (over 3,440 equivalent full-time students), who study at one of their contemporary campuses in Porirua, Wellington, Kāpiti and Auckland. Over 135 programmes of study are offered at certificate, diploma, degree, postgraduate and masters levels.



TE WĀNANGA O AOTEAROA | <https://www.twoa.ac.nz/Nga-Akoranga-Our-Programmes/Youth>

Established in 1984, Te Wānanga o Aotearoa provides holistic education opportunities of the highest quality for Māori, peoples of Aotearoa and the world. Te Wānanga o Aotearoa is one of New Zealand's largest tertiary education providers. They offer a comprehensive range of certificate to degree level qualifications to New Zealanders of all ages and walks of life.



YOOBEE — School of Design | <https://www.yoobee.ac.nz>

Yoobee programmes embrace new and emerging technologies and the latest media platforms, with pathways from certificates and diplomas through to degrees with some of our partner schools. From Digital Media and Design, Web Design and UX and 3D Animation, to Filmmaking, Game Art and Development and 3D Graphics, their programmes keep you plugged in to industry advances, and on top of your game. Delivering full time, part time and online programmes, Yoobee opens doors to the best digital and design studios in the world.

